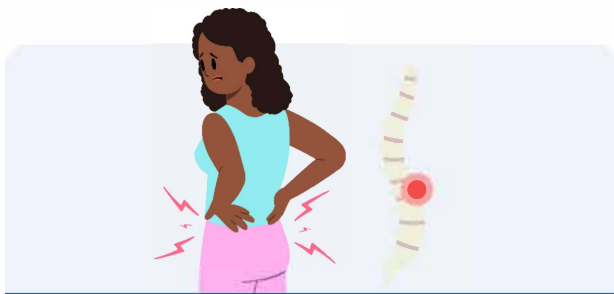


Could It Be Myeloma?

Cancer can develop in any part of the body. **Multiple Myeloma, or Myeloma, is a type of blood cancer.**

Some Signs and Symptoms of Myeloma

These signs and symptoms don't always mean cancer, but it's always best to check and be sure. If you have **ANY** of these signs and symptoms, see your local healthcare provider **as soon as possible**. These signs and symptoms are often mistaken for other health problems. **So, it's important to make sure nothing serious is missed.**



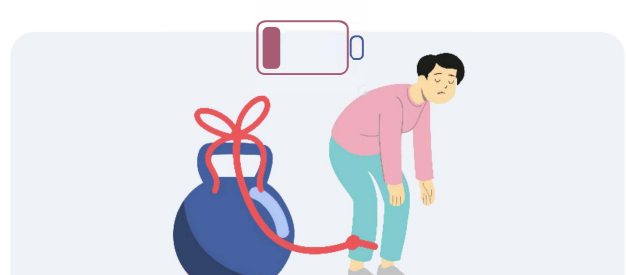
Intense and long-lasting back pain



Intense and long-lasting bone pain



Frequent infections



Feeling very tired

Early Diagnosis and Treatment

The first step to know if you have Myeloma is a blood test that can be arranged by your primary care provider. **The sooner** Myeloma is diagnosed and treated, **the better** the chance to manage health and well-being effectively.



For More Information:

Visit saskcancer.ca/multiplemyeloma or scan the QR Code.
How? Open your phone's camera, scan the code and tap the link that appears.