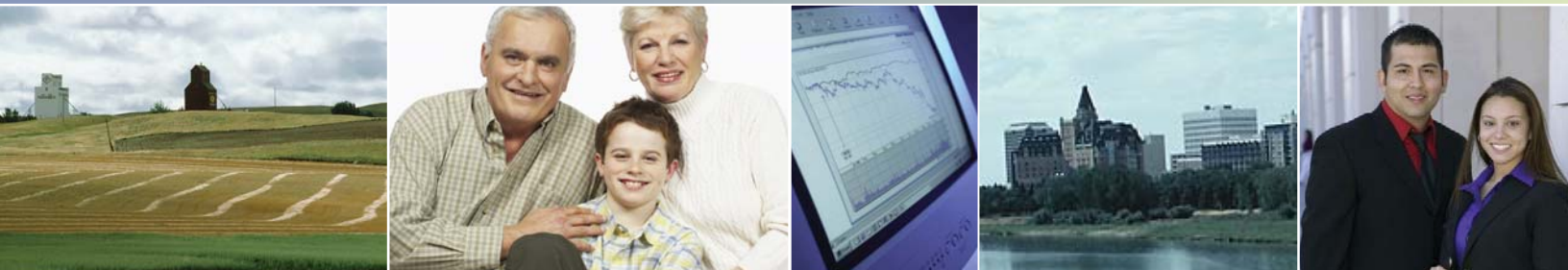


# Saskatchewan Cancer Control Report

*Profiling Cancer Prevalence, 1984-2003*



# Saskatchewan Cancer Control Report Profiling Cancer Prevalence, 1984-2003

## Recommended citation:

Alvi R, Tonita J. Saskatchewan Cancer Control Report Profiling Cancer Prevalence 1984-2003. Saskatoon: Saskatchewan Cancer Agency; 2008.

## Foreword

---

The Saskatchewan Cancer Agency is pleased to provide its latest edition of our Cancer Control Report. The purpose of this report is to inform the public, health providers and government on cancer control in Saskatchewan. This year's report centres around cancer prevalence in Saskatchewan.

Many of us are familiar with cancer death rates (mortality) and incidence (frequency) as the traditional statistical measures of how cancer is impacting our population. Cancer prevalence however may be a new term. In its simplest form, cancer prevalence is defined as "the number of people in a specified population at a given time who are still alive after being diagnosed with cancer".

So, why is this measure important? Cancer prevalence is one way to demonstrate the improvements in survival resulting from more effective treatment and earlier detection. It is one measure of our success in reducing the burden of cancer on our population.

However, cancer prevalence is also an important indication of increasing health care needs. The proportion of the population who are cancer survivors is increasing and these individuals have unique care and follow-up needs. Our cancer prevalence statistics assist us in:

- identifying health needs and planning the necessary programs and services to meet those needs;
- allocating the health resources necessary to provide programs and services; and
- assisting in the allocation of research expenditures and the ongoing assessment and impact of the cancer burden.

As the provincial organization responsible for providing cancer treatment, screening, prevention and research, the Saskatchewan Cancer Agency uses cancer prevalence as an important tool in program development and resource allocation.

We hope that this report will increase your understanding of cancer prevalence in the province and how it informs our work in the fight against cancer.

I want to extend my thanks to our epidemiology staff, including, Riaz Alvi, Jon Tonita, Richard Barss and Leanne McLean for their leadership in preparing this report.



Bob Allen  
Chief Executive Officer



# Table of Contents

---

|  | Page |
|--|------|
| Key Findings .....   | 3    |
| Introduction .....   | 4    |
| Cancer Trends in Saskatchewan .....  | 5    |
| Prevalence.....  | 8    |
| Glossary of Terms .....  | 20   |
| Methods .....  | 21   |
| Appendices:  |      |
| Appendix A - 5-Year and 10-Year Prevalence by Health Region, Age<br>Group and Sex, 2003..... | 22   |
| Appendix B – Categories and Labels .....   | 23   |
| Appendix C – 2003/2004 Statistical Tables.....   | 24   |

## Key Findings

The number of new cancers in females increased 37.7 per cent from 1984 to 2003 (1,569 to 2,161), while the overall age-adjusted incidence rate increased only 12 per cent.

The number of new cancers in males increased 29.2 per cent from 1984 to 2003 (1,927 to 2,490), a smaller increase than seen in females, while the overall age-adjusted incidence rate increased only 15 per cent.

Just over two per cent (2.16 per cent) of the Saskatchewan population as of June 30, 2003 had been previously diagnosed with at least one

invasive cancer (excluding non-melanoma skin cancer) within the previous 10 years.

The 10-year cancer prevalence increased 61 per cent from 1984 to 2003 (13,521 to 21,739). The five-year cancer prevalence increased 53 per cent from 1984 to 2003 (9,191 to 13,949). The one-year cancer prevalence increased 38 per cent from 1984 to 2003 (2,650 to 3,663).

The table below summarizes the prevalence counts by prevalence type and cancer site, noting the change in prevalence from 1984 to 2003.

| Site                                 | 10-Year Prevalence |        |          | 5-Year Prevalence |        |          | 1-Year Prevalence |        |          |
|--------------------------------------|--------------------|--------|----------|-------------------|--------|----------|-------------------|--------|----------|
|                                      | # 1984             | # 2003 | % change | # 1984            | # 2003 | % change | # 1984            | # 2003 | % change |
| Prostate                             | 2057               | 4813   | +134     | 1451              | 3187   | +120     | 361               | 685    | +90      |
| Colorectal (males)                   | 1036               | 1544   | +49      | 701               | 991    | +41      | 207               | 298    | +44      |
| Colorectal (females)                 | 953                | 1419   | +49      | 636               | 928    | +46      | 187               | 259    | +39      |
| Trachea, bronchus and lung (males)   | 423                | 486    | +15      | 354               | 376    | +6       | 185               | 167    | -10      |
| Trachea, bronchus and lung (females) | 196                | 463    | +136     | 162               | 360    | +122     | 72                | 138    | +92      |
| Malignant melanoma of skin (males)   | 179                | 423    | +136     | 121               | 251    | +107     | 26                | 62     | +139     |
| Malignant melanoma of skin (females) | 268                | 496    | +85      | 170               | 283    | +67      | 45                | 60     | +33      |
| Bladder (males)                      | 668                | 791    | +18      | 422               | 465    | +11      | 94                | 85     | -10      |
| Bladder (females)                    | 211                | 305    | +45      | 129               | 166    | +29      | 36                | 28     | -22      |
| Breast (females)                     | 2580               | 4548   | +76      | 1640              | 2680   | +63      | 414               | 593    | +43      |
| Cervical                             | 272                | 318    | +17      | 164               | 182    | +11      | 45                | 46     | +2       |

# Introduction

---

As in past reports, this version of the Saskatchewan Cancer Control Report (SCCR) includes standard incidence and mortality indicators for cancer in Saskatchewan. We have also provided these measures for the most common cancer sites. This report also includes a special topic section. The special topic in this report is on prevalence.

Prevalence is an important measure of the burden of disease in a population. There are a number of ways to calculate prevalence. For this report, we have chosen a *limited duration point prevalence* measure. The measure is a point-prevalence because we are reporting on the number of people alive at a given point in time (as of June 30 of each year) that had a cancer diagnosis. *Limited duration* refers to the amount of time before June 30 of each year that the people had been diagnosed with cancer. We are reporting on three durations for this report: one, five and 10-year durations.

One-year prevalence will be an indicator similar to incidence, of the people alive who had been diagnosed in the previous year. Like incidence, one-year prevalence would reflect the number of people who require significant treatment and support for their disease, which occurs mostly in the first year after diagnosis. Five-year prevalence would include those people who survived five years and are mostly undergoing active surveillance for disease recurrence. Ten-year prevalence is an indicator of longer-term survival and could be interpreted as a measure of those cured.

The point-prevalence will provide the number of people alive as of June 30 of each year who had a previous cancer diagnosis one, five and 10 years prior. This will not represent the total number of people with cancer alive during those time periods because some of them would have died prior to June 30. For example, the five-year point prevalence as of June 30, 2003 is the number of people alive on that date who had been diagnosed with cancer in the previous five years. However, in the previous five years, more people would have been alive with cancer but had died before June 30, 2003. For ease of interpretation, we selected the point prevalence as the measure of interest for this report.



# Cancer Trends in Saskatchewan

## Incidence and Mortality

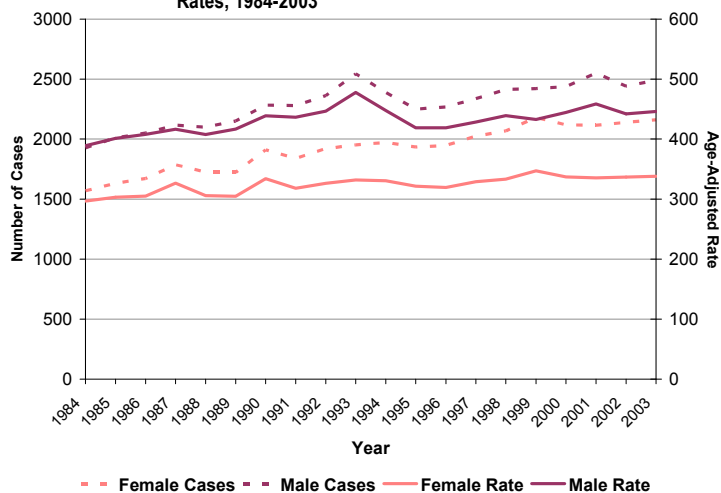
Figure 1 shows the annual number of new invasive cancers diagnosed since 1984 and annual age-adjusted rates. In 1984 there were 1,927 cases diagnosed in men and 1,569 in women. By 2003 the number of cases in men had increased to 2,490 and the number diagnosed in women to 2,161. The average number of cases among males increased about 1.5 per cent annually over the 20-year period, while the average number among females climbed 1.9 per cent each year.

The trend in the number of new cases in women steadily increased over the 20-year period. The average annual increase among women was approximately 30 per cent higher than in men (1.9 per cent vs. 1.5 per cent). This difference is due to the large increase in number of lung cancers diagnosed in women over this time period (shown later). In men, the total number of cases peaked in 1993, the same year the number of prostate cancers diagnosed also peaked. The introduction of the prostate specific antigen (PSA) test in 1990 led to many more prostate cancer diagnoses in subsequent years. (reference: *Changes in case mix and treatment patterns in prostate cancer in Saskatchewan during the prostate specific antigen testing era. Cancer Causes Control (2009) 20:201-209*)

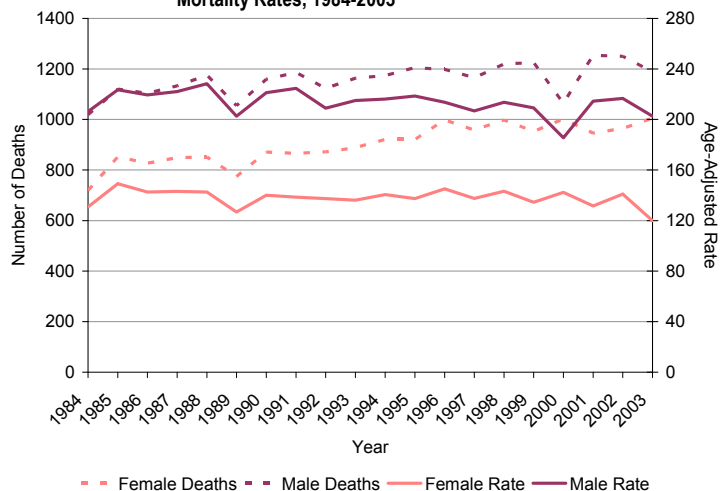
Figure 1 also shows the increase in age-adjusted cancer rates for the period 1984-2003. Adjusting rates controls for changes in age distribution over time (see Glossary). Although the *number* of cases climbed sharply, the increase in *rates* was more modest. The number of cases in women climbed 37.7 per cent, but rates increased by just 14 per cent; among men the number of cases increased 29.2 per cent, but rates increased only 15 per cent. The reason for this difference is the aging of the population over time. Cancer is most common in people over age 50, and the size of this population grew between 1984 and 2003.

Figure 2 shows the number of cancer deaths and age-adjusted mortality rates, by sex, for the province. The number of deaths among men stayed fairly stable over the 20-year period. In 2003, 1,188 men died from cancer, up slightly from 1,019 in 1984. Age-adjusted mortality rates for men were

**Figure 1: Number of Invasive Cancers and Age-Adjusted Incidence Rates, 1984-2003**



**Figure 2: Number of Deaths from Cancer and Age-Adjusted Mortality Rates, 1984-2003**



also stable during this period. The picture was different for women: cancer deaths among women increased 40 per cent, from 719 deaths in 1984 to 1,005 in 2003.

The detailed tables for incidence and mortality counts and rates for the years 2003 and 2004 by cancer site and age group are provided in Appendix C.



# Cancer Trends in Saskatchewan

## Incidence Rates of Common Cancers

Between 1984 and 2003, there were markedly different trends in incidence of the three most common cancers in men – prostate, colorectal and lung cancer (Figure 3). Incidence of prostate cancer, the most common, changed dramatically, largely because of the introduction of PSA testing in Saskatchewan in 1990. After incidence peaked in 1993, age-adjusted rates dropped to previous levels, then rose again sharply starting in 1997.

Lung cancer rates in men were fairly stable, decreasing gradually over time. The age-adjusted rate was highest in 1990, at 80 per 100,000, but had fallen to 59 per 100,000 by 2003. Incidence of colorectal cancer was very stable over this period.

Figure 4 shows the trend in age-adjusted incidence for other common cancers in men. A 51 per cent drop in stomach cancer rates over the 20-year period continued a decreasing trend that began in the 1950s. Bladder cancer rates declined slowly after rates peaked in the early 1990s. The significant drop in rates seen in 2002 was due to a change in ICD-O coding, which reduced the number of invasive cases recorded. While rates of melanoma were stable starting in the late 1980s, rates of non-Hodgkin's lymphoma increased from fewer than 15 per 100,000 before 1987, to about 22 per 100,000 in 2003.

Figure 5 shows the incidence trend for the three most common cancers among women. In 1984 the age-adjusted rate of breast cancer was about 91 per 100,000; by 1990 this figure had increased about 21 per cent, to 110 per 100,000. After 1990 breast cancer rates remained stable, at between 100 and 110 per 100,000. Rates of lung cancer, however, increased substantially. The age-adjusted rate almost doubled over the 20-year period, from about 25 per 100,000 to 42 per 100,000. By 2003 it was similar to the rate for colorectal rate, which was very stable over time.

Figure 3: Age-Adjusted Incidence Rates for Common Invasive Cancers in Males, 1984-2003

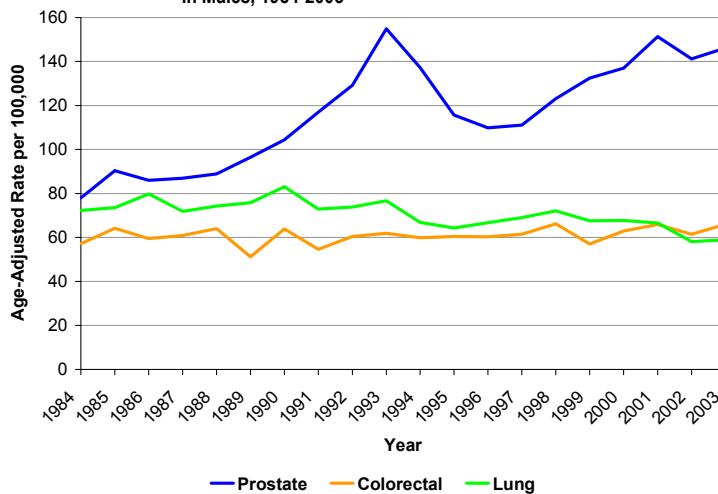


Figure 4: Age-Adjusted Incidence Rates for Selected Invasive Cancers in Males, 1984-2003

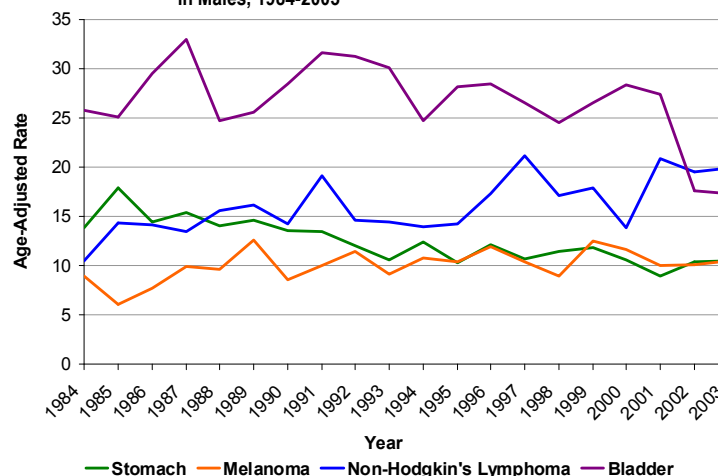
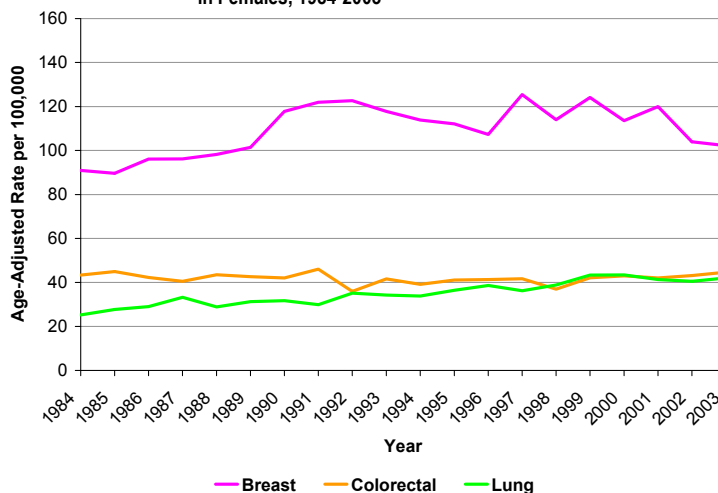


Figure 5: Age-Adjusted Incidence Rates for Common Invasive Cancers in Females, 1984-2003





# Cancer Trends in Saskatchewan

Figure 6 shows trends in age-adjusted rates for common cancers among women. Uterine cancer rates fluctuated between 21 per 100,000 and 15 per 100,000 over the 20-year period. Rates of non-Hodgkin's lymphoma rose in a pattern similar to that seen in men, from a low of 9 per 100,000 in 1984 to as high as 15 per 100,000 in 2000. Melanoma rates hovered around 9 per 100,000 between 1984 and 2003. Although the rate of stomach cancers remained around 7 per 100,000 for most of the period, it fell after 2000.

## Mortality Rates of Common Cancers

Figure 7 shows the age-adjusted mortality rates for common cancers in women. The largest increase was in lung cancer deaths, which rose from 20 per 100,000 in 1984 to 34 per 100,000 in 2003. Breast cancer mortality rose as high as 32 per 100,000 in 1990, but declined to 24 per 100,000 in 2003. Colorectal cancer mortality also dropped during this period, from 20 per 100,000 in the early 1980s to 16 per 100,000 in 2003.

Figure 8 shows the age-adjusted mortality rates for common cancers in men. Rates for lung cancer, the most common cancer cause of death, began declining in 1995. Rates of lung cancer mortality were consistently higher than 60 per 100,000 between the mid-1980s and mid-1990s, but were as low as 50 per 100,000 by the late 1990s. Colorectal cancer mortality was fairly stable in men; rates did not decline as they did in women. Rates of prostate cancer mortality were stable over the 20-year period, at about 35 per 100,000.

Figure 6: Age-Adjusted Incidence Rates for Selected Invasive Cancers in Females, 1984-2003

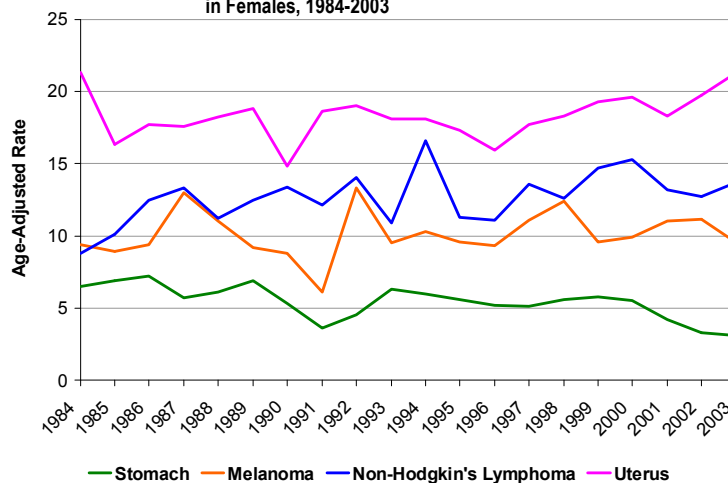


Figure 7: Age-Adjusted Mortality Rates for Common Invasive Cancers in Females, 1984-2003

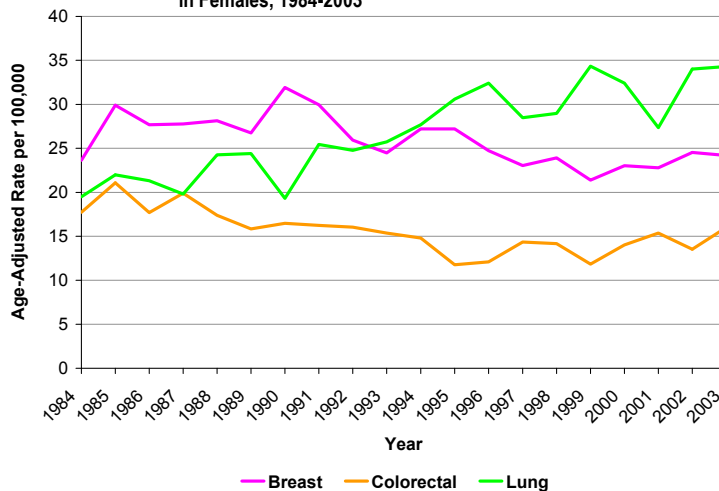
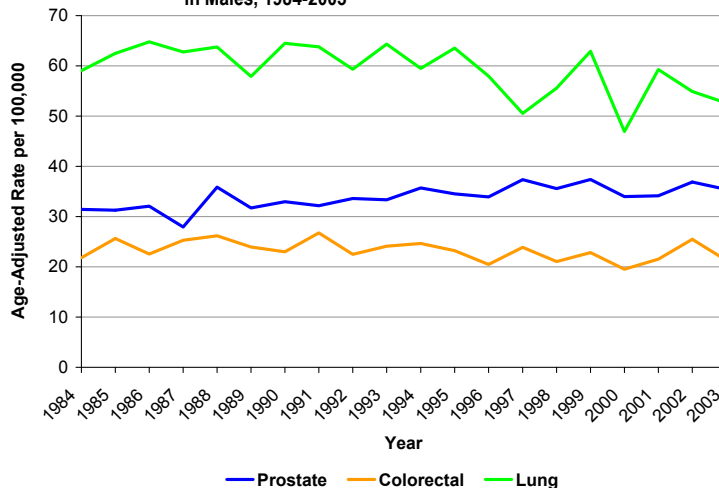


Figure 8: Age-Adjusted Mortality Rates for Common Invasive Cancers in Males, 1984-2003



# Prevalence

The number of new cancers diagnosed each year (cancer incidence) has been climbing in Saskatchewan and throughout Canada, and this trend is expected to continue. Much of the rise in incidence is due to population growth, particularly in the older age groups, and the fact that people are increasingly less likely to die of non-cancer conditions such as cardiovascular disease. (reference: *Statistics Canada, Deaths 2003, 84F0211XIE, 2005*) The length of time that cancer patients survive after being diagnosed with cancer is also increasing, thanks to earlier detection and improved treatment. (reference: *Saskatchewan Cancer Control Report, Profiling Trends in Cancer, 1970-2001, Feb 2003*)

This combination of factors has led to an increase in the number of Saskatchewan people who are living after being diagnosed with cancer. Known as "cancer prevalence," this is the number or proportion of people in a specified population at a given time who are still alive after being diagnosed with cancer.

Prevalence gives a comprehensive view of the simultaneous impact of incidence, survival and mortality patterns on cancers in a given population. Prevalence statistics have a variety of practical applications:

- Planning health services. Although most of these services are initially focused on treatment, emphasis later shifts to managing any subsequent comorbidities. In addition, cancer support and counseling services are often required by cancer patients and their families and friends on both a short- and long-term basis.
- Allocating health resources.
- Managing medical care facilities.
- Investing appropriately in research.
- Assessing the relative burden of cancer with respect to mortality and quality of life.

We calculated cancer prevalence in Saskatchewan using the limited duration point prevalence method. A full description of this approach is discussed in the Methods section. Ten-year, five-year, and one-year limited duration point prevalence for the 10 most common cancer sites, by sex, are also presented.

This report is based on data from the Saskatchewan Cancer Registry, and includes people diagnosed with invasive cancer between July 1, 1974 and June 30, 2003. Results are presented for all cancers combined, as well as for the 10 most common types of cancer in Saskatchewan. Data are presented for the entire Saskatchewan population and are further broken down by health region, sex and age group. Data on non-melanoma skin cancer are not included in this report.

Each of the different measures of prevalence has specific interpretations (see text box below). Shorter-term prevalence (one-year) is useful for planning more intensive treatment for people with active cancers. Mid-term prevalence (five-year) can be used to assess the need for further consultation with cancer specialists and for monitoring existing cases. Longer-term prevalence (10-year) is most relevant for planning ongoing support, such as counseling services.

| Interpretation of prevalence terms:* |  |
|--------------------------------------|--|
| 1-year prevalence                    | Cancer patient is likely still undergoing primary treatment, suffering from its side effects, or both.   |
| 5-year prevalence                    | Includes those patients in the above category. Also includes a proportion of patients who are still undergoing treatment for cancer, side effects, or both, and those patients who, because they are at high risk of recurrence, require close monitoring. |
| 10-year prevalence                   | Includes patients in the above two categories. Also includes patients who are generally considered 'cured' of their disease and in whom the probability of recurrence is low. Continuing follow-up is sometimes recommended.                               |

Reference: *Micheli A, Mugno E, Krogh V, et al. Cancer prevalence in European registry areas. Annals of Oncology 2002;13:840-65.*

\* Note: The interpretation will vary depending on specific types of cancer.

# Prevalence

Trends for overall 10-year, five-year and one-year prevalence are shown in Figure 9.

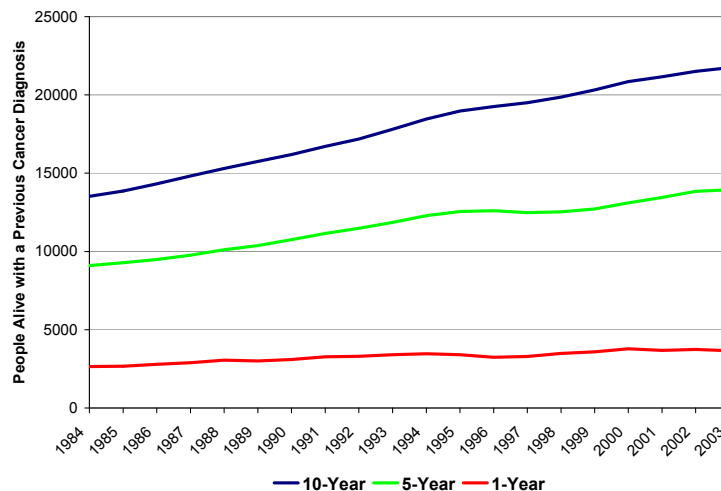
As of June 30, 1984, there were 13,521 people living in Saskatchewan diagnosed with at least one form of invasive cancer (excluding non-melanoma skin cancer) within the previous 10 years (between July 1, 1974 and June 30, 1984). This 10-year prevalence increased to 21,739 by June 30, 2003, a 61% increase. As a proportion of the total Saskatchewan population, the 10-year prevalence went from 1.31 per cent to 2.16 per cent from 1984 to 2003.

Of those included in the 1984 10-year prevalence, 9,101 were diagnosed with at least one primary invasive cancer within the previous five years (i.e., between July 1, 1979 and June 30, 1984). This prevalence increased to 13,949 by June 30, 2003, a 53 per cent increase. As a proportion of the total Saskatchewan population, the five-year prevalence went from 0.88 per cent to 1.38 per cent from 1984 to 2003.

The one-year prevalence as of June 30, 1984 in Saskatchewan was 2,650 representing 0.26 per cent of all residents. This prevalence increased 38 per cent to 3,663 by June 30, 2003. This represented 0.36 per cent of the total population alive with an invasive cancer in the previous year.

The five-year and 10-year prevalence counts for males and females by age groups are provided for by health region in Appendix A. The prevalence counts are not broken down by cancer site to preserve confidentiality.

Figure 9: Trends in 10, 5 and 1-Year Prevalence of Invasive Cancer in Saskatchewan, 1984-2003



# Prevalence

## Top 10 Cancers Diagnosed in Males

### Prostate

As of June 30, 2003 the 10-year prevalence of prostate cancer was 4,813, five-year prevalence was 3,187, and one-year prevalence was 685 (Figure 10). The trend line for 10-year prevalence (blue) is steep, climbing from 2,057 cases in 1984 to 4,813 in 2003, a 134 per cent increase. Similarly, five-year prevalence (green) rose significantly over the 20-year time period, moving from 1,451 cases in 1984 to 3,187 cases in 2003. One-year prevalence (orange) also rose (nearly doubling, from 361 to 685), but not as markedly as 10-year and five-year prevalence.

Table 1 shows the age distribution in 2003 by prevalence type of prostate cancer. Most cases were in the 70 and over age group. While prevalence increased with longer prevalence type in this population, it decreased among men younger than 50 and those ages 50 to 59.

### Colorectal

The 10-year prevalence of colorectal cancer in men was 1,544, five-year prevalence was 991, and one-year prevalence was 298 in 2003 (Figure 11). The trend line for 10-year prevalence (blue) climbed sharply, from 1,036 cases in 1984 to 1,544 in 2003, a 49 per cent increase. Similarly five-year prevalence (green) rose over the 20-year time period, from 701 cases in 1984 to 991 cases in 2003 (+41 per cent). The one-year prevalence (orange) trend was also increasing.

Table 2 shows the age distribution in 2003 by prevalence type of colorectal cancer in men. The majority of cases were in the 70 and over age group. While prevalence among men 70 and older increased with longer prevalence type, it decreased among men in the 50 to 69 age group. Prevalence was stable among men under 50.

Figure 10: 10, 5 and 1-Year Prevalence for Prostate Cancer, 1984-2003

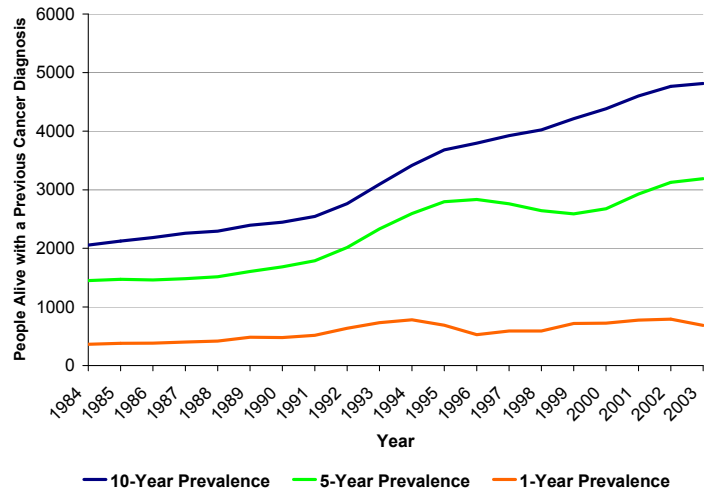


Table 1: Number of Prevalent Cases of Prostate Cancer, 2003

| Prevalence Type | Age Group |            |            |             |
|-----------------|-----------|------------|------------|-------------|
|                 | < 50      | 50-69      | 70 +       | Total       |
| 1-Year          | 12 (2%)   | 288 (42%)  | 385 (56%)  | 685 (100%)  |
| 5-Year          | 36 (1%)   | 1099 (34%) | 2052 (64%) | 3187 (100%) |
| 10-Year         | 36 (1%)   | 1384 (29%) | 3393 (70%) | 4813 (100%) |

Figure 11: 10, 5 and 1-Year Prevalence for Colorectal Cancer (Male), 1984-2003

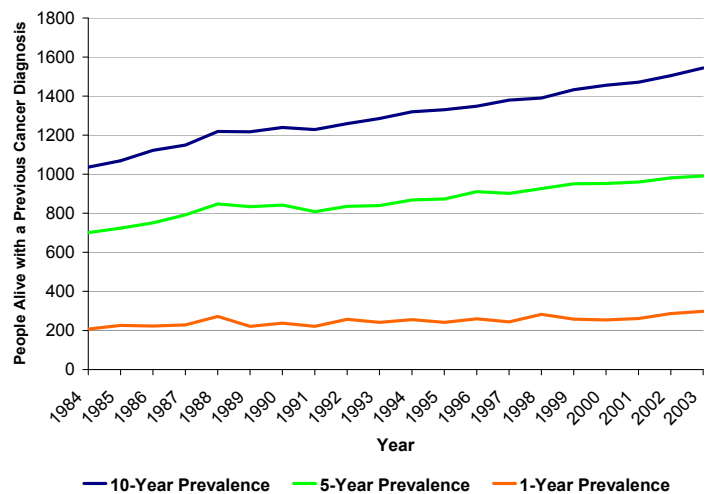


Table 2: Number of Prevalent Cases of Colorectal Cancer (Male), 2003

| Prevalence Type | Age Group |           |           |             |
|-----------------|-----------|-----------|-----------|-------------|
|                 | < 50      | 50-69     | 70 +      | Total       |
| 1-Year          | 16 (5%)   | 139 (47%) | 143 (48%) | 298 (100%)  |
| 5-Year          | 58 (6%)   | 375 (38%) | 558 (56%) | 991 (100%)  |
| 10-Year         | 75 (5%)   | 544 (35%) | 925 (60%) | 1544 (100%) |

# Prevalence

## Bladder

In 2003, the 10-year prevalence of bladder cancer in men was 791, five-year prevalence was 465, and one-year prevalence was 85 (Figure 12). The trend line for 10-year prevalence (blue) increased until the late 1990s; a slight decrease at that point was due to changes in how bladder cancer data are coded. The overall rise in number of cases between 1984 and 2003 (from 668 to 791) represents an 18 per cent increase. Similarly five-year prevalence (green) increased over the 20-year time period, from 422 cases in 1984 to 465 cases in 2003 (+11 per cent). In contrast, there was virtually no change in one-year prevalence (94 cases to 85).

Table 3 shows the age distribution in 2003 by prevalence type of bladder cancer in men. The majority of cases were in the 70 and over age group. Although prevalence among men 70 and over decreased with longer prevalence type, it remained fairly stable among men under age 50 and those between 50 and 69.

## Trachea, Bronchus and Lung

The 10-year prevalence of cancer of the trachea, bronchus and lung in men was 486 in 2003 (Figure 13), five-year prevalence was 376, and one-year prevalence was 167. The trend line for 10-year prevalence (blue) shows a gradual increase from 423 cases in 1984, to 486 in 2003 (+15 per cent). Similarly, five-year prevalence (green) increased gradually – with some fluctuation – over the 20-year period, climbing from 354 cases in 1983 to 376 cases in 2003 (+6 per cent). In contrast, one-year prevalence (orange) fell 10 per cent, from 185 cases to 167.

Table 4 shows the age distribution in 2003 by prevalence type of cancer of the trachea, bronchus and lung in men. The majority of cases were in the 70 and over age group. Prevalence among men under age 50 stayed stable as prevalence type increased, but increased very slightly in men 70 and older. Prevalence among men ages 50 to 69 decreased slightly.

Figure 12: 10, 5 and 1-Year Prevalence for Bladder Cancer (Male), 1984-2003

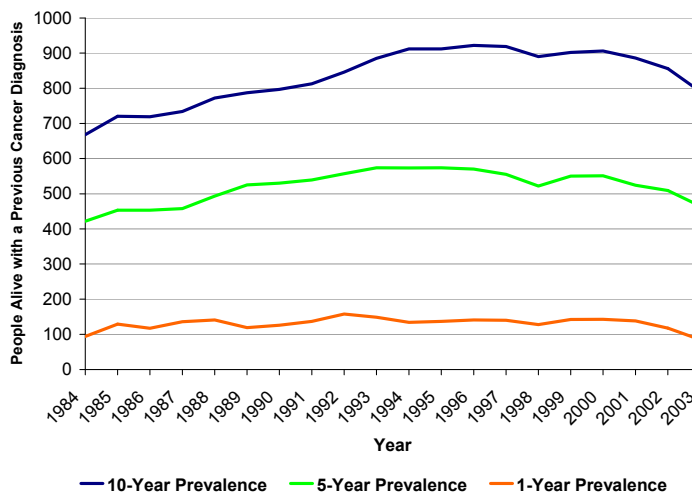


Table 3: Number of Prevalent Cases of Bladder Cancer (Male), 2003

| Prevalence Type | Age Group |           |           |            | Total |
|-----------------|-----------|-----------|-----------|------------|-------|
|                 | < 50      | 50-69     | 70 +      |            |       |
| 1-Year          | 2 (2%)    | 24 (28%)  | 59 (69%)  | 85 (100%)  |       |
| 5-Year          | 18 (4%)   | 161 (35%) | 286 (62%) | 465 (100%) |       |
| 10-Year         | 30 (4%)   | 267 (34%) | 494 (62%) | 791 (100%) |       |

Figure 13: 10, 5 and 1-Year Prevalence for Trachea, Bronchus and Lung Cancer (Male), 1984-2003

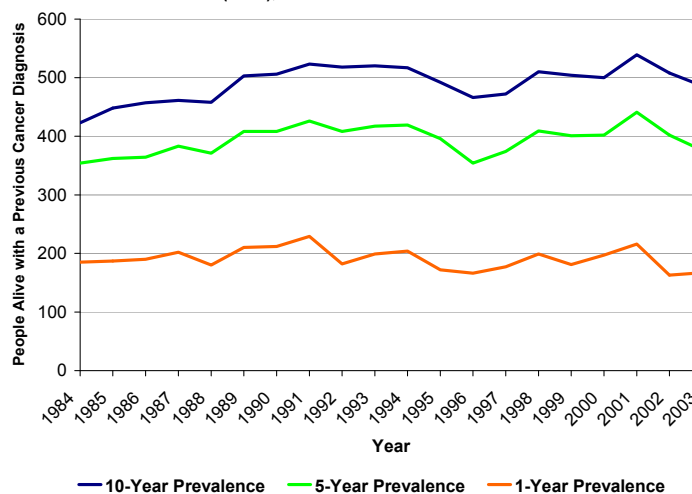


Table 4: Number of Prevalent Cases of Trachea, Bronchus and Lung Cancer (Male), 2003

| Prevalence Type | Age Group |           |           |            | Total |
|-----------------|-----------|-----------|-----------|------------|-------|
|                 | < 50      | 50-69     | 70 +      |            |       |
| 1-Year          | 4 (2%)    | 67 (40%)  | 96 (57%)  | 167 (100%) |       |
| 5-Year          | 15 (4%)   | 142 (38%) | 219 (58%) | 376 (100%) |       |
| 10-Year         | 18 (4%)   | 175 (36%) | 293 (60%) | 486 (100%) |       |

# Prevalence

## Lymphoma

The 10-year prevalence of lymphoma in men in 2003 was 476, five-year prevalence was 325, and one-year prevalence was 83 (Figure 14). The trend line for 10-year prevalence (blue) climbed sharply, from 236 cases in 1984 to 476 in 2003 (+102 per cent). Similarly five-year prevalence (green) increased considerably over the 20-year period, rising from 175 cases in 1984 to 325 cases in 2003 (+86 per cent). In contrast, one-year prevalence (orange) rose, but not quite as markedly as 10-year and five-year prevalence; it increased 70 per cent, going from 49 cases to 83.

Table 5 shows the age distribution in 2003 by prevalence type of lymphoma in men. The majority of cases were equally distributed between the two older age groups (50 to 69, and 70 and over). Prevalence among the older age groups was stable across prevalence types, but decreased in men under 50.

## Leukemia

The 10-year prevalence of leukemia in men in 2003 was 475, five-year prevalence was 310, and one-year prevalence was 81 (Figure 15). The trend line for 10-year prevalence (blue) shows a large (+101 per cent) increase between 1984 and 2003; it moved from 236 cases to 475 over this 20-year period. Similarly five-year prevalence (green) climbed considerably, rising from 184 cases in 1984 to 310 cases in 2003 (+69 per cent). One-year prevalence (orange) increased 33 per cent, from 61 cases to 81.

Table 6 shows the age distribution in 2003 by prevalence type of leukemia in men. The majority of cases were in the 70 and over age group. The prevalence among men ages 50 to 69 increased with longer prevalence type (five-year and 10-year prevalence were similar), while it decreased with longer prevalence type in men 70 and older. Prevalence of leukemia was fairly stable among men under 50.

Figure 14: 10, 5 and 1-Year Prevalence for Lymphoma (Male), 1984-2003

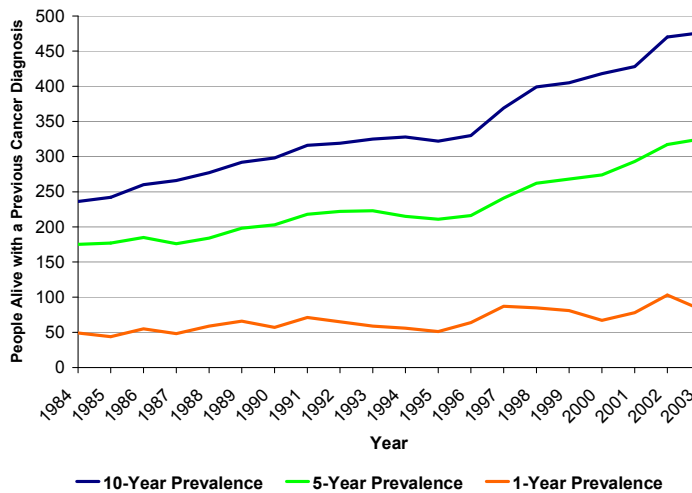


Table 5: Number of Prevalent Cases of Lymphoma (Male), 2003

| Prevalence Type | Age Group |       |       |       |      |       | Total |        |
|-----------------|-----------|-------|-------|-------|------|-------|-------|--------|
|                 | < 50      |       | 50-69 |       | 70 + |       |       |        |
| 1-Year          | 21        | (25%) | 30    | (36%) | 32   | (39%) | 83    | (100%) |
| 5-Year          | 69        | (21%) | 125   | (38%) | 131  | (40%) | 325   | (100%) |
| 10-Year         | 97        | (20%) | 180   | (38%) | 199  | (42%) | 476   | (100%) |

Figure 15: 10, 5 and 1-Year Prevalence for Leukemia (Male), 1984-2003

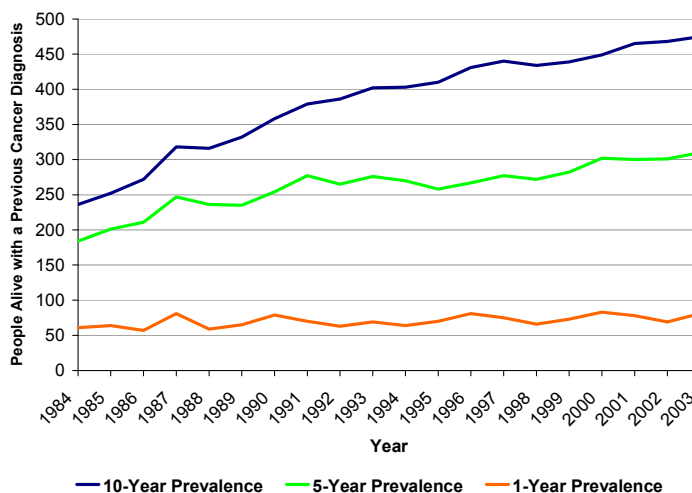


Table 6: Number of Prevalent Cases of Leukemia (Male), 2003

| Prevalence Type | Age Group |       |       |       |      |       | Total |        |
|-----------------|-----------|-------|-------|-------|------|-------|-------|--------|
|                 | < 50      |       | 50-69 |       | 70 + |       |       |        |
| 1-Year          | 19        | (23%) | 21    | (26%) | 41   | (51%) | 81    | (100%) |
| 5-Year          | 57        | (18%) | 101   | (33%) | 152  | (49%) | 310   | (100%) |
| 10-Year         | 103       | (22%) | 160   | (34%) | 212  | (45%) | 475   | (100%) |



# Prevalence

## Melanoma

The 10-year prevalence of malignant melanoma of skin in men in 2003 was 423, five-year prevalence was 251, and one-year prevalence was 62 (Figure 16). The trend line for 10-year prevalence (blue) shows a large increase (136 per cent) between 1984 (179 cases) and 2003 (423 cases). Similarly five-year prevalence (green) of malignant melanoma climbed over the period, from 121 cases in 1984 to 251 cases in 2003 (+107 per cent). The one-year prevalence (orange) increased 139 per cent (from 26 to 62 cases).

Table 7 shows the age distribution in 2003 by prevalence type of malignant melanoma of skin in men. Prevalent cases were fairly equally distributed between the two older age groups (50 to 69, and 70 and older). While prevalence in the 70 and over age group decreased with longer prevalence type, it stayed relatively stable in the under 50 and 50 to 69 age groups.

## Kidney

The 10-year prevalence of kidney cancer in men in 2003 was 380, five-year prevalence was 237, and one-year prevalence was 68 (Figure 17). The 10-year prevalence (blue) climbed 128 per cent between 1984 and 2003, rising from 167 cases to 380. There was a similarly sharp increase in five-year prevalence (green) over the 20-year period; it rose from 114 cases in 1984 to 237 cases in 2003, a 108 per cent increase. The one-year prevalence (orange) rose 127 per cent during the same period (30 cases to 68).

Table 8 shows the age distribution in 2003 by prevalence type of kidney cancer in men. Most cases were fairly equally distributed across the two older age groups (50 to 69, and 70 and over). Prevalence among men in the under 50 age group increased with longer prevalence type (five-year and 10-year were similar); it increased in men over age 70 from one-year to five-year prevalence (10-year was similar to five-year prevalence in this age group). Prevalence in the 50 to 69 age group decreased from one-year to five-year prevalence type; 10-year prevalence was similar to five-year prevalence.

Figure 16: 10, 5 and 1-Year Prevalence for Melanoma (Male), 1984-2003

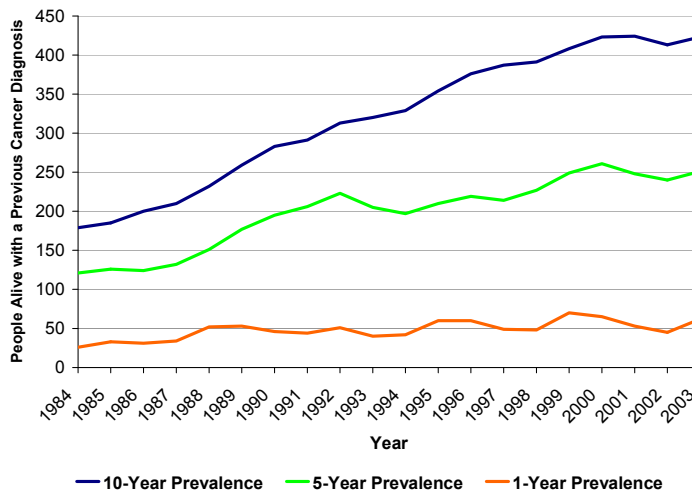


Table 7: Number of Prevalent Cases of Melanoma (Male), 2003

| Prevalence Type | Age Group |       |       |       |      |       | Total |        |
|-----------------|-----------|-------|-------|-------|------|-------|-------|--------|
|                 | < 50      |       | 50-69 |       | 70 + |       |       |        |
| 1-Year          | 13        | (21%) | 24    | (39%) | 25   | (40%) | 62    | (100%) |
| 5-Year          | 50        | (20%) | 105   | (42%) | 96   | (38%) | 251   | (100%) |
| 10-Year         | 93        | (22%) | 181   | (43%) | 149  | (35%) | 423   | (100%) |

Figure 17: 10, 5 and 1-Year Prevalence for Kidney Cancer (Male), 1984-2003

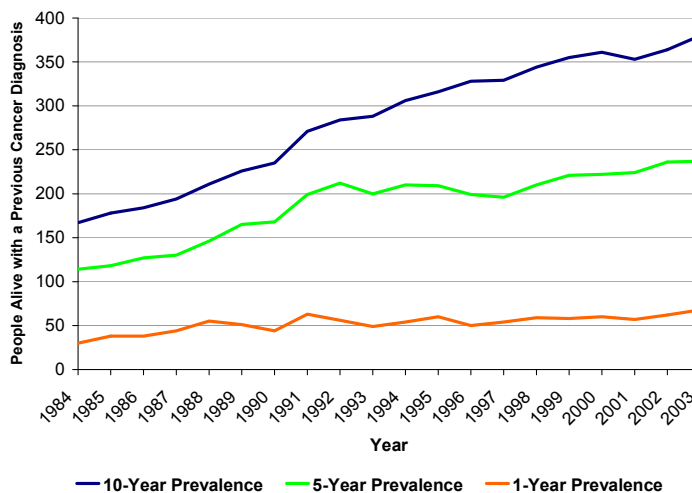


Table 8: Number of Prevalent Cases of Kidney Cancer (Male), 2003

| Prevalence Type | Age Group |       |       |       |      |       | Total |        |
|-----------------|-----------|-------|-------|-------|------|-------|-------|--------|
|                 | < 50      |       | 50-69 |       | 70 + |       |       |        |
| 1-Year          | 6         | (9%)  | 35    | (51%) | 27   | (40%) | 68    | (100%) |
| 5-Year          | 32        | (14%) | 103   | (43%) | 102  | (43%) | 237   | (100%) |
| 10-Year         | 50        | (13%) | 166   | (44%) | 164  | (43%) | 380   | (100%) |



# Prevalence

## Male Genital Organs

The 10-year prevalence of cancer of the male genitals in 2003 was 311, five-year prevalence was 174, and one-year prevalence was 40 (Figure 18). The trend line for 10-year prevalence (blue) shows a large increase (91 per cent); cases climbed from 163 in 1984 to 311 in 2003. The five-year prevalence (green) also rose considerably over the 20-year period, from 97 cases in 1984 to 174 in 2003 (+79 per cent). The one-year prevalence increased 82 per cent (from 22 cases to 40).

Table 9 shows the age distribution in 2003 by prevalence type of cancer of the male genital organs. The majority of prevalent cases were in men under age 50. Prevalence among men 70 and older decreased with longer prevalence type, while it increased in the 50 to 69 age group. Prevalence was fairly stable in men under age 50.

## Lip

The 10-year prevalence of lip cancer in men in 2003 was 228, five-year prevalence was 102, and one-year prevalence was 22 (Figure 19). Ten-year prevalence (blue) dropped dramatically between 1984 and 2003, falling from 593 cases to 228 cases (-62 per cent). Similarly five-year prevalence (green) dropped markedly over the 20-year period; it went from 355 cases in 1984 to 102 cases in 2003 (71 per cent decrease). The one-year prevalence (orange) decreased as well (from 85 to 22 cases), a 74 per cent decrease.

Table 10 shows the age distribution in 2003 by prevalence type of lip cancer in men. The majority of cases were in men younger than 50 or older than 70. Prevalence among the 70 and over age group increased with longer prevalence type; it increased slightly in men under age 50 and decreased in men ages 50 to 69.

Figure 18: 10, 5 and 1-Year Prevalence for Cancer of the Male Genital Organs, 1984-2003

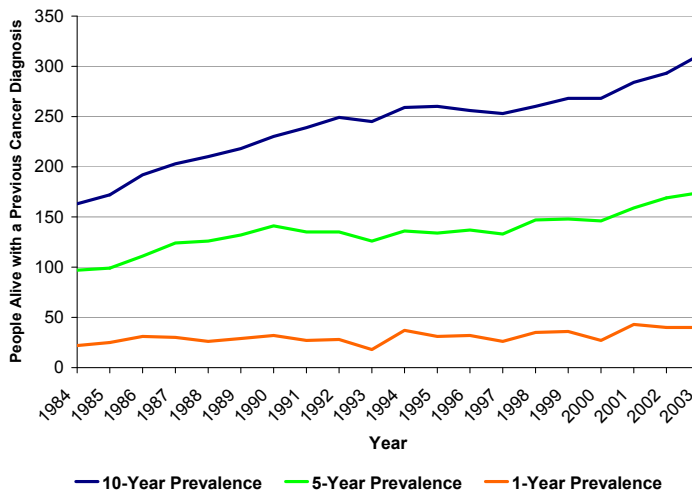


Table 9: Number of Prevalent Cases of Cancer of the Male Genital Organs, 2003

| Prevalence Type | Age Group |       |       |       |      |       | Total |        |
|-----------------|-----------|-------|-------|-------|------|-------|-------|--------|
|                 | < 50      |       | 50-69 |       | 70 + |       |       |        |
| 1-Year          | 30        | (75%) | 5     | (13%) | 5    | (13%) | 40    | (100%) |
| 5-Year          | 127       | (73%) | 30    | (17%) | 17   | (10%) | 174   | (100%) |
| 10-Year         | 229       | (74%) | 57    | (18%) | 25   | (8%)  | 311   | (100%) |

Figure 19: 10, 5 and 1-Year Prevalence for Lip Cancer (Male), 1984-2003

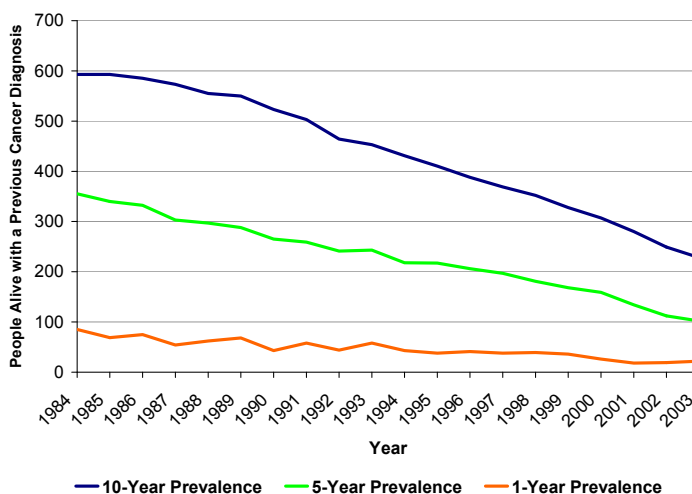


Table 10: Number of Prevalent Cases of Lip Cancer (Male), 2003

| Prevalence Type | Age Group |      |       |       |      |       | Total |        |
|-----------------|-----------|------|-------|-------|------|-------|-------|--------|
|                 | < 50      |      | 50-69 |       | 70 + |       |       |        |
| 1-Year          | 1         | (5%) | 8     | (36%) | 13   | (59%) | 22    | (100%) |
| 5-Year          | 7         | (7%) | 30    | (29%) | 65   | (64%) | 102   | (100%) |
| 10-Year         | 12        | (5%) | 57    | (25%) | 159  | (70%) | 228   | (100%) |

# Prevalence

## Top 10 Cancers Diagnosed in Females

### Breast

As of June 30, 2003 the 10-year prevalence of breast cancer in women was 4,858, five-year prevalence was 2,680, and one-year prevalence was 593 (Figure 20). The trend line for 10-year prevalence (blue) rose steeply, from 2,580 cases in 1984 to 4,548 cases in 2004 (+76 per cent). Similarly, five-year prevalence (green) increased considerably (+63 per cent) over the 20-year time period, with the number of cases climbing from 1,640 in 1984, to 2,680 in 2003. The one-year prevalence (orange) also rose (414 to 593 cases, a 43 per cent increase), but not quite as markedly as 10-year and five-year prevalence.

Table 11 shows the age distribution in 2003 by prevalence type of breast cancer in women. Most cases were equally distributed between the two older age groups (50 to 69, and 70 and over). Prevalence in women under age 50 decreased with longer prevalence type, while it stayed fairly stable in the 50 to 69 and 70 and older age groups.

Figure 20: 10, 5 and 1-Year Prevalence for Breast Cancer, 1984-2003

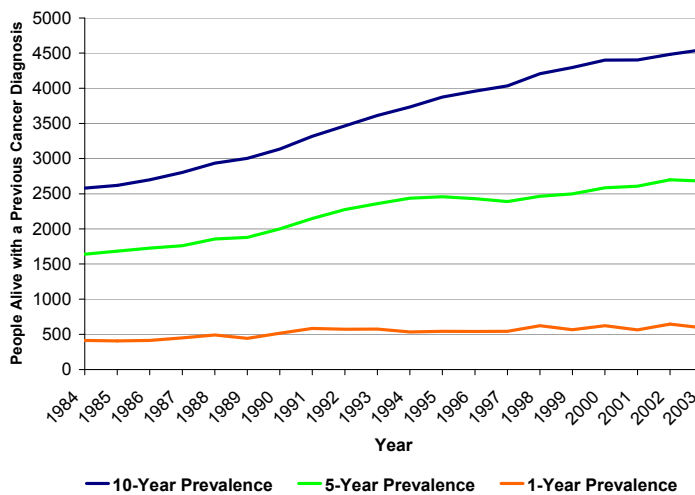


Table 11: Number of Prevalent Cases of Breast Cancer, 2003

| Prevalence Type | Age Group |       |       |       |      |       | Total |        |
|-----------------|-----------|-------|-------|-------|------|-------|-------|--------|
|                 | < 50      |       | 50-69 |       | 70 + |       |       |        |
| 1-Year          | 110       | (19%) | 247   | (42%) | 236  | (40%) | 593   | (100%) |
| 5-Year          | 408       | (15%) | 1165  | (43%) | 1107 | (41%) | 2680  | (100%) |
| 10-Year         | 584       | (13%) | 1933  | (43%) | 2031 | (45%) | 4548  | (100%) |

### Colorectal

The 10-year prevalence of colorectal cancer in women in 2003 was 1,419, five-year prevalence was 928, and one-year prevalence was 259. Ten-year prevalence (blue) increased 49 per cent, climbing from 953 cases in 1984 to 1,419 in 2003 (Figure 21). The five-year prevalence (green) also rose during the 20-year period; there were 636 cases in 1984 and 928 cases in 2003 (+46 per cent). Similarly, one-year prevalence (orange) increased 39 per cent, from 187 cases to 259.

Table 12 shows the age distribution in 2003 by prevalence type of colorectal cancer in women. The majority of cases were in women 70 and older. The prevalence among women over age 70 increased slightly with longer prevalence type, and declined slightly in the under 50 and 50 to 69 age groups.

Figure 21: 10, 5 and 1-Year Prevalence for Colorectal Cancer (Female), 1984-2003

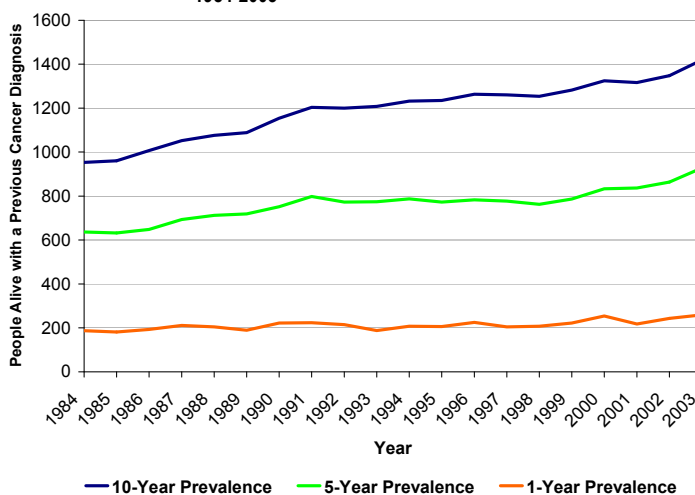


Table 12: Number of Prevalent Cases of Colorectal Cancer (Female), 2003

| Prevalence Type | Age Group |      |       |       |      |       | Total |        |
|-----------------|-----------|------|-------|-------|------|-------|-------|--------|
|                 | < 50      |      | 50-69 |       | 70 + |       |       |        |
| 1-Year          | 19        | (7%) | 87    | (34%) | 153  | (59%) | 259   | (100%) |
| 5-Year          | 58        | (6%) | 290   | (31%) | 580  | (63%) | 928   | (100%) |
| 10-Year         | 78        | (5%) | 418   | (29%) | 923  | (65%) | 1419  | (100%) |

# Prevalence

## Uterus

The 10-year prevalence of uterine cancer in 2003 was 864, five-year prevalence was 502, and one-year prevalence was 120 (Figure 22). Ten-year prevalence (blue) decreased until the mid 1990s, then increased. The number of cases rose from 819 in 1984 to 864 in 2003, a six per cent increase. The five-year prevalence showed a similar trend; the number of cases increased slightly (+8 per cent) over the 20-year period, going from 466 in 1984 to 502 in 2003. The one-year prevalence (orange) rose 14 per cent, from 107 cases to 120.

Table 13 shows the age distribution in 2003 by prevalence type of uterine cancer. Most cases were in women ages 50 to 69. The prevalence among women 70 and older rose slightly with longer prevalence type, but declined in the under 50 and 50 to 69 age groups.

## Melanoma

The 10-year prevalence of malignant melanoma of skin in women in 2003 was 496, five-year prevalence was 283, and one-year prevalence was 60 (Figure 23). There was an 85 per cent increase in 10-year prevalence over the 20-year time period (blue), with the number of cases climbing from 268 in 1984 to 496 in 2003. Five-year prevalence (green) also rose considerably, from 170 cases in 1984 to 283 cases in 2003 (+67 per cent). In contrast, the one-year prevalence (orange) increased only 33 per cent (from 45 to 60 cases) over the same period.

Table 14 shows the age distribution in 2003 by prevalence type of malignant melanoma of skin in women. Cases were equally distributed between all three age groups. Prevalence in the 50 to 69 age group decreased as prevalence type increased. It stayed relatively stable in women under 50 and 70 and older.

Figure 22: 10, 5 and 1-Year Prevalence for Cancer of the Uterus, 1984-2003

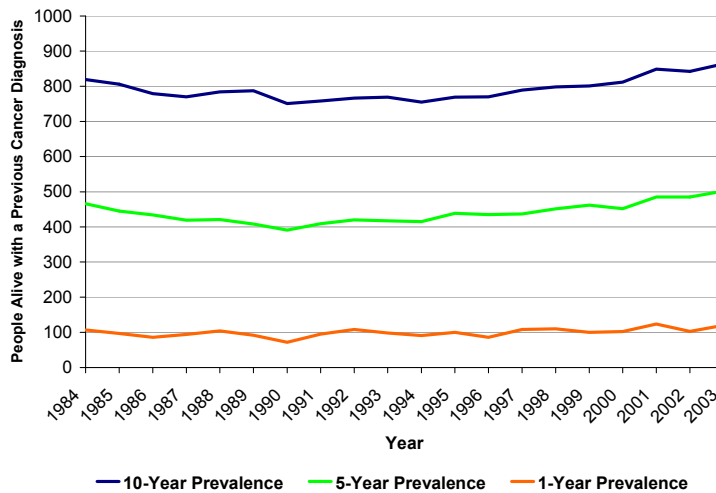


Table 13: Number of Prevalent Cases of Cancer of the Uterus, 2003

| Prevalence Type | Age Group |       |       |       |      |       | Total |        |
|-----------------|-----------|-------|-------|-------|------|-------|-------|--------|
|                 | < 50      |       | 50-69 |       | 70 + |       |       |        |
| 1-Year          | 13        | (11%) | 66    | (55%) | 41   | (34%) | 120   | (100%) |
| 5-Year          | 41        | (8%)  | 274   | (55%) | 187  | (37%) | 502   | (100%) |
| 10-Year         | 59        | (7%)  | 435   | (50%) | 370  | (43%) | 864   | (100%) |

Figure 23: 10, 5 and 1-Year Prevalence for Melanoma (Female), 1984-2003

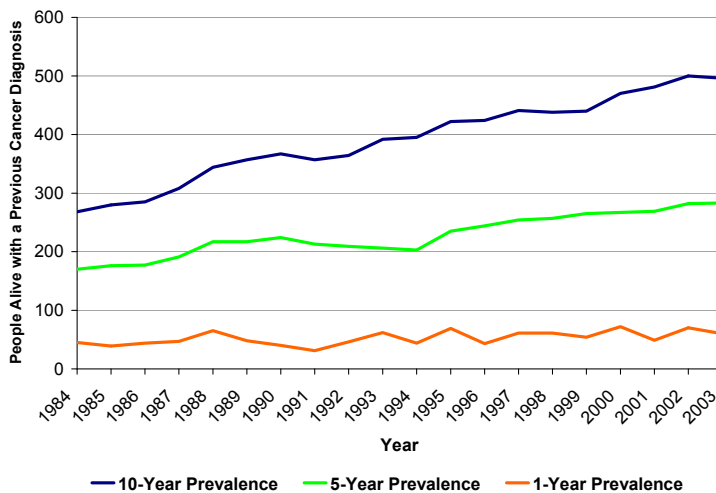


Table 14: Number of Prevalent Cases of Melanoma (Female), 2003

| Prevalence Type | Age Group |       |       |       |      |       | Total |        |
|-----------------|-----------|-------|-------|-------|------|-------|-------|--------|
|                 | < 50      |       | 50-69 |       | 70 + |       |       |        |
| 1-Year          | 17        | (28%) | 26    | (43%) | 17   | (28%) | 60    | (100%) |
| 5-Year          | 88        | (31%) | 105   | (37%) | 90   | (32%) | 283   | (100%) |
| 10-Year         | 157       | (32%) | 179   | (36%) | 160  | (32%) | 496   | (100%) |

# Prevalence

## Lymphoma

The 10-year prevalence of lymphoma in women in 2003 was 465, five-year prevalence was 304, and one-year prevalence was 76 (Figure 24). The trend line for 10-year prevalence (blue) shows a very large increase (+150 per cent), with cases climbing from 186 in 1984 to 465 in 2003. Five-year prevalence (green) also rose significantly over the 20-year period, climbing 143 per cent between 1984 and 2004 (125 to 304 cases). Similarly, the one-year prevalence (orange) increased markedly, with the number of cases rising from 34 to 76 (+124 per cent).

Table 15 shows the age distribution in 2003 by prevalence type of lymphoma in women. Most cases were equally distributed between the two older age groups (50 to 69, and 70 and over). Prevalence was stable for all age groups over each prevalence type.

## Trachea, Bronchus and Lung

The 10-year prevalence of cancer of the trachea, bronchus and lung in women in 2003 was 463, five-year prevalence was 360, and one-year prevalence was 138 (Figure 25). Ten-year prevalence (blue line) increased 136 per cent, rising sharply from 196 cases in 1984 to 463 cases in 2003. The five-year prevalence (green) also climbed dramatically over the period, from 162 cases in 1984 to 360 in 2003 (+122 per cent). The increase in one-year prevalence (orange) was more modest, rising 92 per cent over the 20-year period (from 72 to 138 cases).

Table 16 shows the age distribution in 2003 by prevalence type of cancer of the trachea, bronchus and lung in women. The majority of cases were equally distributed in the two older age groups (50 to 69, and 70 and over). Prevalence among women under age 50 decreased with longer prevalence type (five-year and 10-year were similar); it increased from one-year to five-year prevalence in the 70 and older age group, with the 10-year prevalence similar to the five-year. Prevalence was stable in the 50 to 69 age group across all three prevalence types (10-year, five-year, and one-year).

Figure 24: 10, 5 and 1-Year Prevalence for Lymphoma (Female), 1984-2003

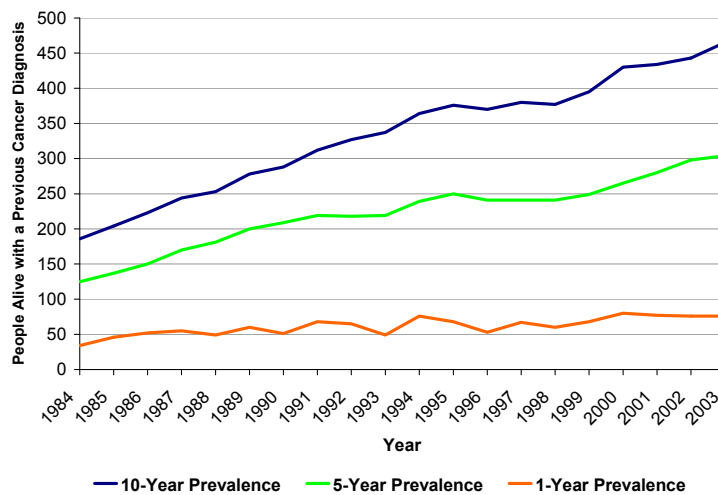


Table 15: Number of Prevalent Cases of Lymphoma (Female), 2003

| Prevalence Type | Age Group |       |       |       |      |       | Total |        |
|-----------------|-----------|-------|-------|-------|------|-------|-------|--------|
|                 | < 50      |       | 50-69 |       | 70 + |       |       |        |
| 1-Year          | 9         | (12%) | 34    | (45%) | 33   | (43%) | 76    | (100%) |
| 5-Year          | 35        | (12%) | 135   | (44%) | 134  | (44%) | 304   | (100%) |
| 10-Year         | 59        | (13%) | 203   | (44%) | 203  | (44%) | 465   | (100%) |

Figure 25: 10, 5 and 1-Year Prevalence for Trachea, Bronchus and Lung Cancer (Female), 1984-2003

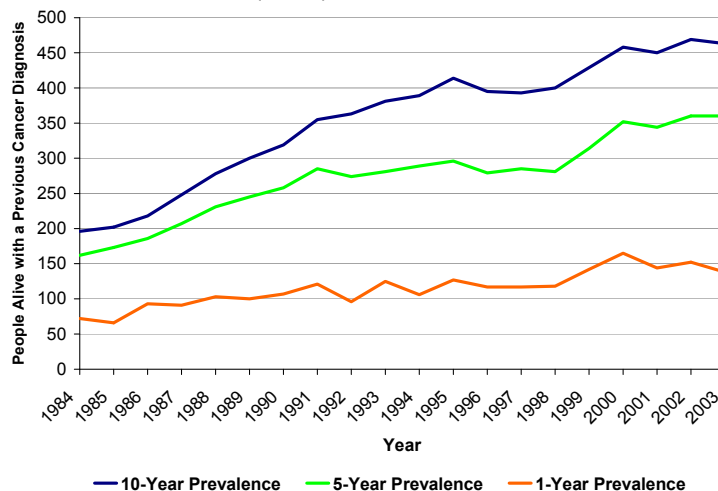


Table 16: Number of Prevalent Cases of Trachea, Bronchus and Lung Cancer (Female), 2003

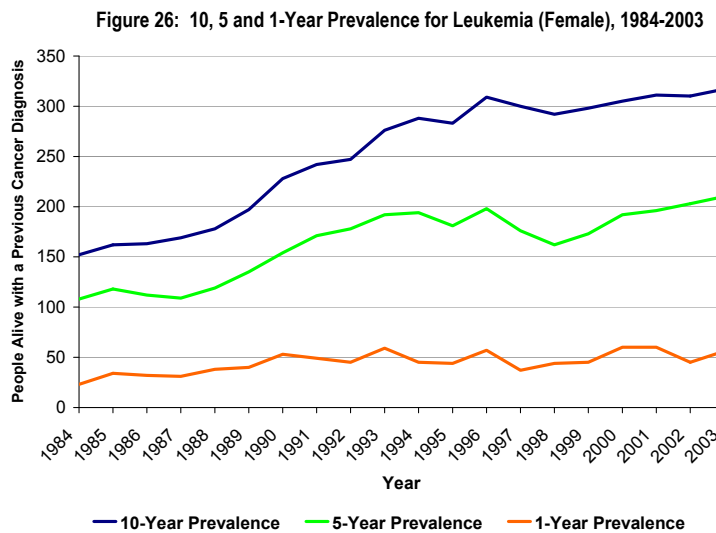
| Prevalence Type | Age Group |      |       |       |      |       | Total |        |
|-----------------|-----------|------|-------|-------|------|-------|-------|--------|
|                 | < 50      |      | 50-69 |       | 70 + |       |       |        |
| 1-Year          | 11        | (8%) | 64    | (46%) | 63   | (46%) | 138   | (100%) |
| 5-Year          | 15        | (4%) | 162   | (45%) | 183  | (51%) | 360   | (100%) |
| 10-Year         | 20        | (4%) | 206   | (44%) | 237  | (51%) | 463   | (100%) |

# Prevalence

## Leukemia

The 10-year prevalence of leukemia in women in 2003 was 317, five-year prevalence was 210, and one-year prevalence was 56 (Figure 26). The trend line for 10-year prevalence (blue) shows a large increase (+109 per cent), with the number of cases rising from 152 in 1984 to 317 in 2003. The five-year prevalence (green) also rose considerably over the 20-year period, from 108 to 210 cases (+94 per cent). The one-year prevalence (orange) showed a steeper increase, climbing 144 per cent (from 23 cases to 56).

Table 17 shows the age distribution in 2003 by prevalence type of leukemia in women. Most cases were in women 70 and older. The prevalence among women under age 50 decreased with longer prevalence type (with five-year and 10-year prevalence similar), but increased from one-year to five-year prevalence type in those 70 and older (10-year prevalence was similar to five-year). Prevalence (across the three prevalence types) was stable among women ages 50 to 69.



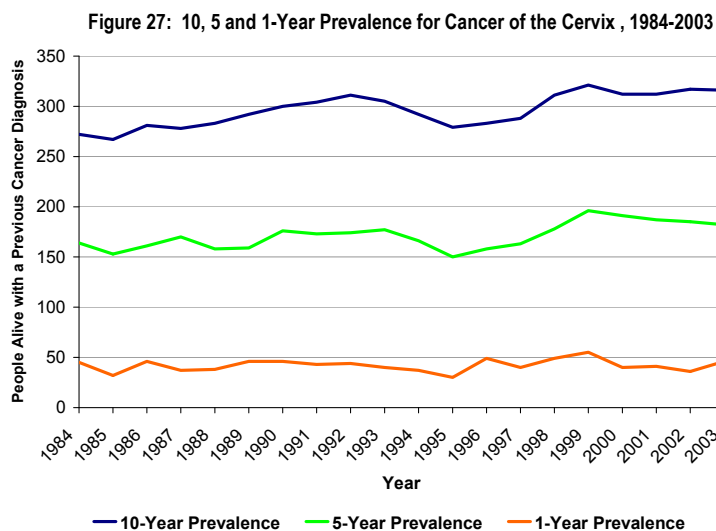
**Table 17: Number of Prevalent Cases of Leukemia (Female), 2003**

| Prevalence Type | Age Group |       |       |       |      |       | Total |        |
|-----------------|-----------|-------|-------|-------|------|-------|-------|--------|
|                 | < 50      |       | 50-69 |       | 70 + |       |       |        |
| 1-Year          | 18        | (32%) | 16    | (29%) | 22   | (39%) | 56    | (100%) |
| 5-Year          | 45        | (21%) | 50    | (24%) | 115  | (55%) | 210   | (100%) |
| 10-Year         | 69        | (22%) | 75    | (24%) | 173  | (55%) | 317   | (100%) |

## Cervix

The 10-year prevalence of cervical cancer in 2003 was 318, five-year prevalence was 182, and one-year prevalence was 46 (Figure 27). Ten-year prevalence (blue) increased moderately between 1984 and 2003, rising from 272 cases to 318 (+17 per cent). The 20-year period also saw a modest rise in five-year prevalence (green); the number of cases climbed 11 per cent, from 164 in 1984 to 182 in 2003. In comparison, one-year prevalence (orange) was virtually unchanged (45 cases to 46).

Table 18 shows the age distribution in 2003 by prevalence type of cervical cancer. The majority of cases were in women younger than 50. Prevalence in the 70 and over age group decreased with longer prevalence type, while it stayed fairly stable in women under age 50 and those 50 to 69.



**Table 18: Number of Prevalent Cases of Cancer of the Cervix, 2003**

| Prevalence Type | Age Group |       |       |       |      |       | Total |        |
|-----------------|-----------|-------|-------|-------|------|-------|-------|--------|
|                 | < 50      |       | 50-69 |       | 70 + |       |       |        |
| 1-Year          | 26        | (57%) | 12    | (26%) | 8    | (17%) | 46    | (100%) |
| 5-Year          | 106       | (58%) | 55    | (30%) | 21   | (12%) | 182   | (100%) |
| 10-Year         | 180       | (57%) | 105   | (33%) | 31   | (10%) | 316   | (100%) |

# Prevalence

## Thyroid

The 10-year prevalence of thyroid cancer in 2003 in women was 307, five-year prevalence was 190, and one-year prevalence was 39 (Figure 28). Ten-year prevalence (blue line) rose moderately between 1984 and 2003, with most of the increase occurring in the early 2000s; the number of cases climbed 50 per cent, from 205 to 307. Five-year prevalence (green) showed a similar increase (+62 per cent), rising from 117 cases in 1984 to 190 cases in 2003. In contrast, one-year prevalence (orange) rose sharply in the same 20-year period, going from 20 cases to 39 (+95 per cent).

Table 19 show the age distribution in 2003 by prevalence type of thyroid cancer in women. The majority of cases were in women under age 50. While prevalence in this age group decreased slightly with longer prevalence type, it increased among women 70 and older. Prevalence was stable in the 50 to 69 age group.

## Bladder

The 10-year prevalence of bladder cancer in 2003 in women was 305, five-year prevalence was 166, and one-year prevalence was 28 (Figure 29). The trend line for 10-year prevalence (blue) climbed until the early 2000s, at which time there was a slight drop due to changes in coding. Cases rose from 211 in 1984 to 305 in 2003, a 45 per cent increase. Similarly, five-year prevalence (green) increased 29 per cent over the 20-year period (129 cases to 166). The trend in one-year prevalence (orange) was fairly flat in comparison, declining from 36 cases to 28 (-22 per cent).

Table 20 shows the age distribution in 2003 by prevalence type of bladder cancer in women. Most cases were in women 70 and older. Prevalence among women younger than 50 and those older than 70 decreased with longer prevalence type. It increased from one-year to five-year prevalence type in the 50 to 69 age group (prevalence was similar for 10-year and five-year prevalence types).

Figure 28: 10, 5 and 1-Year Prevalence for Thyroid Cancer (Female), 1984-2003

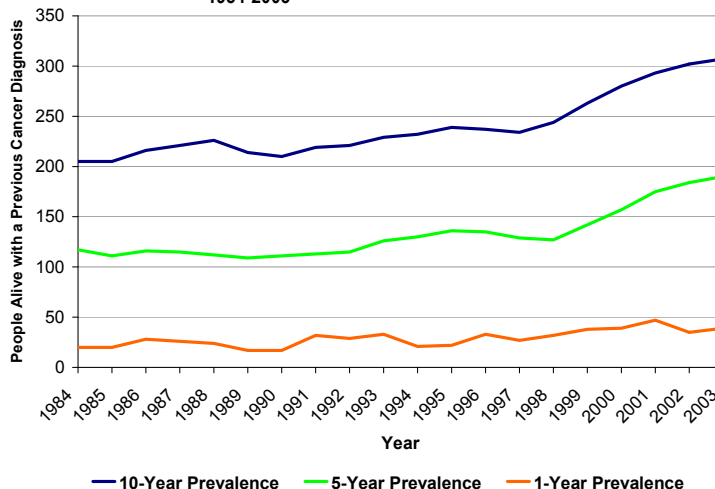


Table 19: Number of Prevalent Cases of Thyroid Cancer (Female), 2003

| Prevalence Type | Age Group |       |       |       |      |       | Total      |
|-----------------|-----------|-------|-------|-------|------|-------|------------|
|                 | < 50      |       | 50-69 |       | 70 + |       |            |
| 1-Year          | 22        | (56%) | 13    | (33%) | 4    | (10%) | 39 (100%)  |
| 5-Year          | 106       | (56%) | 58    | (31%) | 26   | (14%) | 190 (100%) |
| 10-Year         | 162       | (53%) | 97    | (32%) | 48   | (16%) | 307 (100%) |

Figure 29: 10, 5 and 1-Year Prevalence for Bladder Cancer (Female), 1984-2003

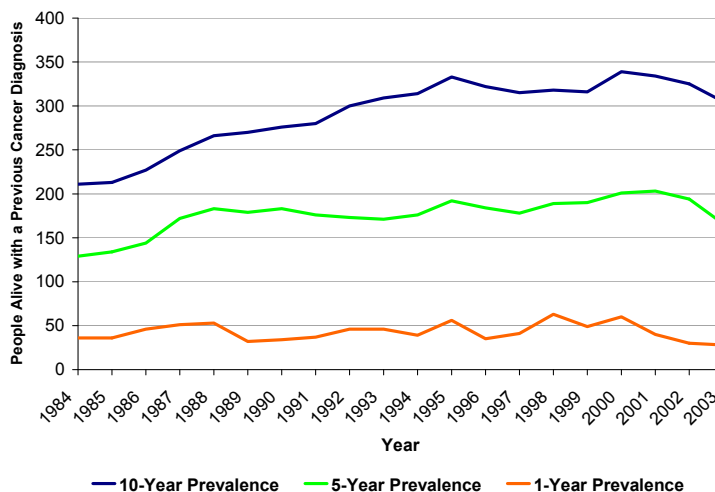


Table 20: Number of Prevalent Cases of Bladder Cancer (Female), 2003

| Prevalence Type | Age Group |       |       |       |      |       | Total      |
|-----------------|-----------|-------|-------|-------|------|-------|------------|
|                 | < 50      |       | 50-69 |       | 70 + |       |            |
| 1-Year          | 3         | (11%) | 4     | (14%) | 21   | (75%) | 28 (100%)  |
| 5-Year          | 7         | (4%)  | 57    | (34%) | 102  | (61%) | 166 (100%) |
| 10-Year         | 18        | (6%)  | 97    | (32%) | 190  | (62%) | 305 (100%) |

# Glossary of Terms

---

## **Age-Adjusted**

A statistical technique used to remove, as much as possible, the effects of differences in age when comparing two or more populations. An age-adjusted rate represents the number of new cases of cancer or cancer deaths that would have occurred if the age distribution of the study population in a particular time period was the same as the standard population (1991 Canadian population).

## **Age-Specific**

The number of cases of a particular event in a given age group.

## **Behaviour**

In cancer, a designation of whether the tumour is malignant, benign, in situ, or uncertain.

## **Covered Population**

The covered population is based on eligibility for health insurance benefits in Saskatchewan. All residents of Saskatchewan are included except members of the Canadian Armed Forces, members of the Royal Canadian Mounted Police, inmates of federal prisons, and people not yet meeting the residency requirement.

## **Crude Rate**

A rate that is not adjusted for other factors (such as age).

## **Incidence**

The number of new cases of a particular event.

## **Invasive Cancer**

The uncontrolled growth of cells resulting in the formation of a malignant tumour that invades underlying tissues.

## **In Situ Cancer**

Confined to the site of origin without invasion of neighbouring tissue.

## **Malignant**

A tumour characterized by uncontrolled growth.

## **Prevalence**

The number of people alive at a point in time who were previously diagnosed with a particular disease.

## **Rate**

An expression of the frequency of a particular event during a specified time period and in a defined population.

## **Surveillance**

The systematic collection, collation, and analysis of data and its timely dissemination to those who need to know so that action can be taken.

## **Acronyms**

ICDO --International Classification of Diseases for Oncology

PSA ----Prostate Specific Antigen

SCCR --Saskatchewan Cancer Control Report



# Methods

---

## Data Source

The data for this report was provided by the Saskatchewan Cancer Registry, which is maintained by the Saskatchewan Cancer Agency. A detailed description of the history of the Registry, the data sources, coding classifications, and the information recorded in it, is provided in the first issue of the Saskatchewan Cancer Control Report. (reference: *Tonita J, Alvi R, Watson F, Robson D. Saskatchewan Cancer Control Report: Profiling Trends in Cancer, 1970-2001. Regina: Saskatchewan Cancer Agency; 2003*)

All cases of invasive and in situ cancer were retrieved from the Registry for the 20 years **1984-2003**. Information obtained for each case included age at diagnosis, sex, date of diagnosis, date of death, cause of death, age at death, ICDO-T and ICDO-M topography and morphology codes, behaviour, and residence (five-digit provincial rescode) at date of diagnosis and date of death.

The cancers were grouped into common site categories using the ICDO-T, ICDO-M and behaviour codes as indicated in Appendix B. These site categories were used for all analysis.

All age adjustments were done using the direct method and the 1991 Canadian population as the standard. The covered population of Saskatchewan was used for the denominators to calculate rates.

## Limited Duration Point Prevalence

Limited duration point prevalence was calculated using Saskatchewan Cancer Registry data. For all prevalence calculations the year is defined as July 1 to June 30. The cutoff date of June 30 of each year is used, as this is the date the Saskatchewan Health covered population is calculated. As of June 30 of each year the number of Saskatchewan residents alive with a previous cancer diagnosis in either the last year, five years or 10 years (depending on the duration of the prevalence measure) is summed to yield the limited duration point prevalence for the time period in question.

When calculating prevalence for all invasive cancers combined, the first cancer case, regardless of the cancer site, was counted as the prevalent case. This would result in people only being counted once even if they had more than one cancer diagnosis in the time period of interest. When calculating prevalence by specific cancer site, a person with more than one cancer was counted more than once for each cancer site. For example, a man diagnosed with prostate cancer in 2000 and lung cancer in 2003 who was alive as of June 30, 2003 would count as one prevalent case of cancer when describing five-year prevalence of all cancers combined. However, the same man would be counted once when describing five-year prevalence for prostate cancer and once when describing five-year prevalence for lung cancer.

## Appendix A

### FIVE-YEAR AND 10-YEAR PREVALENCE BY HEALTH REGION, AGE GROUP AND SEX, 2003

|                        |                 | Age Group |        |         |        |         |         | TOTAL   |
|------------------------|-----------------|-----------|--------|---------|--------|---------|---------|---------|
|                        |                 | 0-49      |        | 50-69   |        | 70+     |         |         |
| Health Region          | Prevalence Type | F         | M      | F       | M      | F       | M       |         |
| Sun Country            | 5-Year          | 54.81     | 35.33  | 156.00  | 154.00 | 203.00  | 287.62  | 890.76  |
|                        | 10-Year         | 85.81     | 54.33  | 249.33  | 226.33 | 358.66  | 453.43  | 1427.89 |
| Five Hills             | 5-Year          | 59.09     | 42.37  | 180.89  | 164.46 | 233.77  | 347.55  | 1028.13 |
|                        | 10-Year         | 93.09     | 61.66  | 256.47  | 226.05 | 400.58  | 555.59  | 1593.44 |
| Cypress                | 5-Year          | 55.00     | 25.00  | 123.50  | 125.00 | 171.00  | 258.50  | 758.00  |
|                        | 10-Year         | 71.00     | 43.00  | 187.50  | 167.00 | 266.50  | 418.00  | 1153.00 |
| Regina Qu'Appelle      | 5-Year          | 284.87    | 178.30 | 676.15  | 671.66 | 729.31  | 881.18  | 3421.47 |
|                        | 10-Year         | 444.87    | 291.01 | 1077.51 | 923.24 | 1237.38 | 1389.18 | 5363.19 |
| Sunrise                | 5-Year          | 62.53     | 36.00  | 201.98  | 205.53 | 280.49  | 424.53  | 1211.06 |
|                        | 10-Year         | 95.06     | 63.00  | 319.51  | 274.53 | 450.55  | 679.06  | 1881.71 |
| Saskatoon              | 5-Year          | 321.20    | 220.65 | 773.37  | 666.61 | 784.59  | 913.87  | 3680.29 |
|                        | 10-Year         | 530.80    | 348.47 | 1227.86 | 967.53 | 1291.07 | 1474.94 | 5840.67 |
| Heartland              | 5-Year          | 50.00     | 35.00  | 133.00  | 138.00 | 183.00  | 235.00  | 774.00  |
|                        | 10-Year         | 81.00     | 58.00  | 217.00  | 190.00 | 295.00  | 431.00  | 1272.00 |
| Kelsey Trail           | 5-Year          | 33.47     | 26.00  | 124.36  | 127.51 | 150.79  | 209.33  | 671.46  |
|                        | 10-Year         | 59.94     | 42.18  | 200.17  | 180.51 | 281.07  | 365.46  | 1129.33 |
| Prince Albert Parkland | 5-Year          | 104.21    | 36.35  | 190.93  | 212.15 | 207.05  | 257.60  | 1008.29 |
|                        | 10-Year         | 156.79    | 65.35  | 307.83  | 300.73 | 348.37  | 457.34  | 1636.41 |
| Prairie North          | 5-Year          | 92.82     | 27.00  | 131.82  | 150.64 | 140.00  | 209.82  | 752.10  |
|                        | 10-Year         | 139.64    | 47.00  | 212.82  | 208.64 | 249.82  | 323.00  | 1180.92 |
| Northern Regions*      | 5-Year          | 25.00     | 21.00  | 47.00   | 38.40  | 16.00   | 20.00   | 167.40  |
|                        | 10-Year         | 30.00     | 27.00  | 72.00   | 45.44  | 27.00   | 34.00   | 235.44  |

\*Mamawetan Churchill River, Keewatin Yathé, Athabasca Health Authority

## Appendix B

### ANNUAL REPORT CATEGORIES AND LABELS

| Site   | ICDO-T (Topography)                        | ICDO-M (Morphology)    | Behaviour |
|--|--|------------------------|-----------|
| Lip  | C000-C009                                  |                        | 3         |
| Oral Cavity  | C019-C069                                  |                        | 3         |
| Head and Neck  | C079-C148                                  |                        | 3         |
| Esophagus  | C150-C159                                  |                        | 3         |
| Stomach  | C160-C169                                  |                        | 3         |
| Small Intestine  | C170-C179                                  |                        | 3         |
| Colon  | C180-C189                                  |                        | 3         |
| Rectum   | C199-C218                                  |                        | 3         |
| Liver  | C220                                       |                        | 3         |
| Gallbladder and Biliary Tract                          | C221-C249                                  |                        | 3         |
| Pancreas   | C250-C259                                  |                        | 3         |
| Digestive Tract  | C260-C269                                  |                        | 3         |
| Respiratory System                                     | C300-C319, C379, C380-C399                 |                        | 3         |
| Larynx   | C320-C329                                  |                        | 3         |
| Trachea, Bronchus and Lung                             | C339-C349                                  |                        | 3         |
| Bone and Connective tissue                             | C400-C419, C490-C499                       |                        | 3         |
| Malignant Melanoma                                     | C440-C449                                  | 8720-8790              | 3         |
| Skin   | C440-C449                                  | Not 8720-8790          | 3         |
| Breast   | C500-C509                                  |                        | 3         |
| Female Genital Organs                                  | C510-C519, C529, C570-C589                 |                        | 3         |
| Cervix   | C530-C539                                  |                        | 3         |
| Uterus   | C540-C559                                  |                        | 3         |
| Ovary  | C569                                       |                        | 3         |
| Male Genital Organs                                    | C600-609, C620-C639                        |                        | 3         |
| Prostate   | C619                                       |                        | 3         |
| Kidney   | C649                                       |                        | 3         |
| Other Urinary Tract                                    | C659, C669, C680-C689                      |                        | 3         |
| Bladder  | C670-C679                                  |                        | 3*        |
| Brain and Central Nervous System                       | C700-C709, C710-C729                       |                        | 3         |
| Thyroid  | C739                                       |                        | 3         |
| Other Endocrine Glands                                 | C740-C759                                  |                        | 3         |
| Non-Hodgkin's Lymphoma                                 |  | 9670-9729; 9590-9596   | 3         |
| Hodgkin's lymphoma                                     |  | 9650-9667              | 3         |
| Multiple Myeloma                                       |  | 9730-9739              | 3         |
| Leukemia   |  | 9800-9949              | 3         |
| Other Primaries  | C470-C488, C690-C699, C760-C779, any other |                        | 3         |
| Other Primaries Hematologic/<br>Myeloproliferative etc |  | 9950-9989<br>9740-9769 | 3         |
| Primary Unknown  | C809                                       |                        | 3         |
| Cervix in situ   | C53  |                        | 2         |
| Other in situ  | Not C53                                    |                        | 2         |

## Appendix C

### INCIDENCE – AGE-SPECIFIC NUMBERS (FEMALE) – 2003

#### Age Group

| SITE                           | Age Group |           |           |           |           |           |           |            |            |            |            |            |            |            |            | All Ages    |
|--------------------------------|-----------|-----------|-----------|-----------|-----------|-----------|-----------|------------|------------|------------|------------|------------|------------|------------|------------|-------------|
|                                | 0-14      | 15-19     | 20-24     | 25-29     | 30-34     | 35-39     | 40-44     | 45-49      | 50-54      | 55-59      | 60-64      | 65-69      | 70-74      | 75-79      | 80+        |             |
| Lip                            | 0         | 0         | 0         | 0         | 0         | 0         | 0         | 0          | 0          | 2          | 0          | 0          | 0          | 0          | 0          | 2           |
| Oral Cavity                    | 0         | 0         | 0         | 0         | 0         | 0         | 1         | 2          | 3          | 2          | 4          | 0          | 3          | 1          | 6          | 22          |
| Head & Neck                    | 0         | 1         | 0         | 0         | 0         | 1         | 2         | 0          | 1          | 0          | 0          | 1          | 3          | 1          | 0          | 10          |
| Esophagus                      | 0         | 0         | 0         | 0         | 0         | 0         | 0         | 0          | 0          | 0          | 0          | 3          | 1          | 2          | 6          | 12          |
| Stomach                        | 0         | 0         | 0         | 0         | 0         | 0         | 1         | 0          | 2          | 4          | 2          | 2          | 2          | 2          | 9          | 24          |
| Colon                          | 0         | 0         | 0         | 0         | 1         | 0         | 3         | 9          | 2          | 12         | 16         | 31         | 27         | 39         | 73         | 213         |
| Rectum                         | 0         | 0         | 0         | 0         | 1         | 0         | 2         | 5          | 6          | 10         | 13         | 13         | 7          | 17         | 29         | 103         |
| Liver                          | 1         | 0         | 0         | 0         | 0         | 0         | 1         | 0          | 0          | 1          | 0          | 0          | 2          | 0          | 2          | 7           |
| Gall Bladder & Biliary Tract   | 0         | 0         | 0         | 0         | 0         | 0         | 0         | 0          | 0          | 4          | 4          | 1          | 2          | 6          | 5          | 22          |
| Pancreas                       | 0         | 0         | 0         | 0         | 0         | 1         | 0         | 0          | 0          | 1          | 1          | 9          | 10         | 11         | 19         | 52          |
| Digestive Tract                | 0         | 0         | 0         | 0         | 0         | 0         | 0         | 0          | 0          | 1          | 1          | 0          | 1          | 0          | 5          | 8           |
| Larynx                         | 0         | 0         | 0         | 0         | 0         | 0         | 0         | 0          | 1          | 0          | 0          | 1          | 0          | 1          | 1          | 4           |
| Trachea, Bronchus & Lung       | 0         | 0         | 0         | 1         | 0         | 1         | 2         | 11         | 12         | 30         | 31         | 42         | 54         | 47         | 49         | 280         |
| Respiratory System             | 0         | 0         | 0         | 1         | 0         | 1         | 1         | 1          | 1          | 0          | 0          | 1          | 1          | 0          | 0          | 7           |
| Bone & Connective Tissue       | 1         | 0         | 1         | 1         | 0         | 1         | 1         | 1          | 1          | 1          | 0          | 1          | 1          | 0          | 9          | 19          |
| Malignant Melanoma of Skin     | 0         | 0         | 2         | 2         | 0         | 4         | 3         | 7          | 13         | 4          | 4          | 4          | 3          | 3          | 8          | 57          |
| Breast                         | 0         | 1         | 0         | 3         | 8         | 11        | 34        | 58         | 56         | 81         | 63         | 68         | 81         | 64         | 118        | 646         |
| Cervix Invasive                | 0         | 1         | 1         | 1         | 5         | 3         | 9         | 8          | 8          | 3          | 1          | 1          | 3          | 1          | 4          | 49          |
| Uterus                         | 0         | 0         | 0         | 0         | 1         | 2         | 6         | 10         | 17         | 24         | 15         | 17         | 12         | 15         | 8          | 127         |
| Ovary                          | 0         | 0         | 0         | 0         | 1         | 1         | 0         | 6          | 6          | 11         | 5          | 7          | 4          | 8          | 14         | 63          |
| Female Genital Organs          | 0         | 0         | 0         | 0         | 0         | 1         | 2         | 1          | 3          | 3          | 1          | 4          | 8          | 0          | 2          | 25          |
| Kidney                         | 0         | 0         | 0         | 1         | 0         | 1         | 2         | 2          | 5          | 2          | 8          | 2          | 5          | 5          | 7          | 40          |
| Bladder                        | 0         | 0         | 1         | 0         | 0         | 0         | 0         | 1          | 1          | 1          | 1          | 4          | 4          | 7          | 19         | 39          |
| Other Urinary Tract            | 0         | 0         | 0         | 0         | 0         | 0         | 1         | 1          | 0          | 0          | 1          | 0          | 1          | 0          | 2          | 6           |
| Brain & Central Nervous System | 2         | 1         | 2         | 2         | 2         | 3         | 1         | 1          | 2          | 1          | 1          | 2          | 2          | 3          | 5          | 30          |
| Thyroid                        | 1         | 3         | 2         | 2         | 7         | 6         | 7         | 0          | 2          | 1          | 7          | 5          | 1          | 2          | 1          | 47          |
| Other Endocrine Glands         | 0         | 0         | 0         | 0         | 0         | 0         | 0         | 0          | 1          | 0          | 0          | 0          | 0          | 0          | 0          | 1           |
| Non-Hodgkin's Lymphoma         | 0         | 1         | 0         | 2         | 3         | 1         | 2         | 3          | 5          | 9          | 7          | 9          | 10         | 12         | 26         | 90          |
| Hodgkin's Disease              | 0         | 1         | 1         | 2         | 0         | 0         | 1         | 0          | 1          | 1          | 0          | 1          | 0          | 0          | 0          | 8           |
| Multiple Myeloma               | 0         | 0         | 0         | 0         | 0         | 0         | 1         | 0          | 3          | 1          | 0          | 1          | 3          | 6          | 6          | 21          |
| Leukemia                       | 3         | 1         | 0         | 2         | 0         | 1         | 1         | 6          | 6          | 2          | 5          | 6          | 11         | 10         | 12         | 66          |
| Primary Unknown                | 0         | 0         | 0         | 0         | 0         | 0         | 3         | 0          | 4          | 1          | 6          | 3          | 5          | 7          | 22         | 51          |
| Other Primaries                | 1         | 0         | 0         | 0         | 2         | 0         | 1         | 3          | 3          | 2          | 2          | 9          | 8          | 7          | 18         | 56          |
| <b>Total</b>                   | <b>9</b>  | <b>10</b> | <b>10</b> | <b>20</b> | <b>31</b> | <b>39</b> | <b>88</b> | <b>136</b> | <b>165</b> | <b>215</b> | <b>199</b> | <b>248</b> | <b>275</b> | <b>277</b> | <b>485</b> | <b>2207</b> |
| Non-Melanoma Skin              | 2         | 0         | 1         | 4         | 5         | 7         | 35        | 60         | 69         | 69         | 68         | 76         | 110        | 173        | 421        | 1100        |
| Cervix In Situ                 | 0         | 11        | 49        | 70        | 50        | 36        | 20        | 17         | 9          | 5          | 1          | 2          | 3          | 1          | 1          | 275         |
| Other In Situ                  | 0         | 0         | 2         | 1         | 2         | 4         | 5         | 18         | 19         | 32         | 26         | 28         | 49         | 35         | 82         | 303         |

INCIDENCE – AGE-SPECIFIC NUMBERS (FEMALE) – 2004

Age Group

| SITE                           | Age Group |          |           |           |           |           |           |            |            |            |            |            |            |            |            | All Ages    |
|--------------------------------|-----------|----------|-----------|-----------|-----------|-----------|-----------|------------|------------|------------|------------|------------|------------|------------|------------|-------------|
|                                | 0-14      | 15-19    | 20-24     | 25-29     | 30-34     | 35-39     | 40-44     | 45-49      | 50-54      | 55-59      | 60-64      | 65-69      | 70-74      | 75-79      | 80+        |             |
| Lip                            | 0         | 0        | 0         | 0         | 0         | 0         | 0         | 0          | 0          | 0          | 0          | 1          | 0          | 1          | 4          | 6           |
| Oral Cavity                    | 0         | 0        | 0         | 0         | 0         | 0         | 1         | 0          | 0          | 0          | 0          | 1          | 5          | 3          | 6          | 16          |
| Head & Neck                    | 0         | 0        | 1         | 0         | 0         | 2         | 0         | 1          | 1          | 1          | 0          | 1          | 0          | 2          | 2          | 11          |
| Esophagus                      | 0         | 0        | 0         | 0         | 0         | 0         | 0         | 1          | 0          | 1          | 0          | 1          | 1          | 2          | 3          | 9           |
| Stomach                        | 0         | 0        | 0         | 0         | 0         | 0         | 0         | 1          | 1          | 0          | 2          | 4          | 2          | 2          | 15         | 27          |
| Colon                          | 1         | 0        | 0         | 0         | 1         | 1         | 1         | 4          | 9          | 12         | 24         | 23         | 32         | 37         | 77         | 222         |
| Rectum                         | 0         | 0        | 0         | 0         | 0         | 0         | 1         | 5          | 5          | 9          | 9          | 8          | 14         | 18         | 24         | 93          |
| Liver                          | 0         | 0        | 0         | 0         | 0         | 0         | 1         | 0          | 0          | 0          | 0          | 0          | 1          | 1          | 1          | 4           |
| Gall Bladder & Biliary Tract   | 0         | 0        | 0         | 0         | 0         | 0         | 0         | 1          | 1          | 2          | 1          | 4          | 3          | 4          | 6          | 22          |
| Pancreas                       | 0         | 0        | 0         | 0         | 0         | 0         | 1         | 1          | 2          | 3          | 4          | 8          | 5          | 6          | 20         | 50          |
| Digestive Tract                | 0         | 0        | 0         | 0         | 0         | 0         | 0         | 0          | 0          | 2          | 1          | 0          | 0          | 1          | 5          | 9           |
| Larynx                         | 0         | 0        | 0         | 0         | 0         | 0         | 1         | 1          | 0          | 0          | 1          | 0          | 2          | 0          | 0          | 5           |
| Trachea, Bronchus & Lung       | 0         | 0        | 1         | 0         | 0         | 0         | 3         | 12         | 9          | 28         | 35         | 45         | 39         | 55         | 40         | 267         |
| Respiratory System             | 0         | 1        | 0         | 0         | 0         | 0         | 0         | 0          | 0          | 1          | 0          | 0          | 2          | 0          | 3          | 7           |
| Bone & Connective Tissue       | 0         | 2        | 1         | 0         | 0         | 0         | 0         | 2          | 0          | 1          | 0          | 1          | 2          | 0          | 6          | 15          |
| Malignant Melanoma of Skin     | 0         | 1        | 0         | 0         | 3         | 2         | 7         | 7          | 8          | 5          | 4          | 2          | 3          | 7          | 9          | 58          |
| Breast                         | 0         | 0        | 0         | 1         | 8         | 14        | 49        | 66         | 62         | 62         | 69         | 64         | 74         | 68         | 104        | 641         |
| Cervix Invasive                | 0         | 0        | 1         | 5         | 1         | 3         | 6         | 8          | 6          | 2          | 1          | 2          | 1          | 5          | 2          | 43          |
| Uterus                         | 0         | 0        | 1         | 1         | 0         | 1         | 5         | 7          | 13         | 15         | 25         | 19         | 16         | 14         | 10         | 127         |
| Ovary                          | 1         | 1        | 0         | 0         | 0         | 0         | 4         | 4          | 3          | 6          | 4          | 9          | 12         | 7          | 9          | 60          |
| Female Genital Organs          | 0         | 0        | 0         | 0         | 0         | 0         | 2         | 3          | 0          | 1          | 2          | 1          | 3          | 2          | 10         | 24          |
| Kidney                         | 0         | 0        | 0         | 1         | 1         | 2         | 1         | 6          | 1          | 5          | 4          | 3          | 4          | 6          | 7          | 41          |
| Bladder                        | 0         | 0        | 0         | 0         | 0         | 0         | 1         | 1          | 2          | 2          | 0          | 1          | 4          | 6          | 8          | 25          |
| Other Urinary Tract            | 0         | 0        | 0         | 0         | 0         | 0         | 0         | 0          | 0          | 0          | 0          | 2          | 1          | 4          | 3          | 10          |
| Brain & Central Nervous System | 3         | 1        | 0         | 0         | 0         | 0         | 1         | 1          | 0          | 3          | 4          | 2          | 2          | 2          | 5          | 24          |
| Thyroid                        | 0         | 1        | 2         | 1         | 2         | 3         | 2         | 8          | 6          | 2          | 4          | 3          | 3          | 2          | 4          | 43          |
| Other Endocrine Glands         | 0         | 0        | 0         | 1         | 1         | 0         | 0         | 0          | 0          | 0          | 0          | 0          | 0          | 0          | 0          | 2           |
| Non-Hodgkin's Lymphoma         | 0         | 0        | 1         | 1         | 0         | 3         | 4         | 4          | 4          | 9          | 5          | 14         | 9          | 6          | 20         | 80          |
| Hodgkin's Disease              | 0         | 1        | 0         | 1         | 0         | 0         | 1         | 1          | 0          | 1          | 1          | 0          | 1          | 0          | 1          | 8           |
| Multiple Myeloma               | 0         | 0        | 0         | 0         | 0         | 0         | 0         | 1          | 3          | 1          | 4          | 5          | 4          | 6          | 5          | 29          |
| Leukemia                       | 1         | 0        | 2         | 1         | 0         | 0         | 5         | 4          | 4          | 4          | 4          | 2          | 7          | 8          | 17         | 59          |
| Primary Unknown                | 0         | 0        | 0         | 0         | 0         | 0         | 1         | 4          | 3          | 4          | 3          | 5          | 5          | 17         | 19         | 61          |
| Other Primaries                | 0         | 0        | 0         | 0         | 0         | 0         | 1         | 1          | 3          | 3          | 5          | 6          | 3          | 8          | 9          | 39          |
| <b>Total</b>                   | <b>6</b>  | <b>8</b> | <b>10</b> | <b>13</b> | <b>17</b> | <b>31</b> | <b>99</b> | <b>155</b> | <b>146</b> | <b>185</b> | <b>216</b> | <b>237</b> | <b>260</b> | <b>300</b> | <b>454</b> | <b>2137</b> |
| Non-Melanoma Skin              | 1         | 1        | 3         | 3         | 9         | 18        | 32        | 62         | 56         | 59         | 75         | 103        | 122        | 138        | 373        | 1055        |
| Cervix In Situ                 | 0         | 13       | 53        | 60        | 34        | 22        | 19        | 10         | 2          | 0          | 3          | 2          | 1          | 0          | 0          | 219         |
| Other In Situ                  | 0         | 0        | 1         | 1         | 2         | 3         | 14        | 25         | 22         | 20         | 20         | 32         | 36         | 46         | 90         | 312         |

INCIDENCE – AGE-SPECIFIC NUMBERS (MALE) – 2003

Age Group

| SITE                           | 0-14      | 15-19    | 20-24     | 25-29     | 30-34     | 35-39     | 40-44     | 45-49     | 50-54      | 55-59      | 60-64      | 65-69      | 70-74      | 75-79      | 80+        | All Ages    |
|--------------------------------|-----------|----------|-----------|-----------|-----------|-----------|-----------|-----------|------------|------------|------------|------------|------------|------------|------------|-------------|
| Lip                            | 0         | 0        | 0         | 0         | 0         | 0         | 1         | 0         | 0          | 0          | 2          | 3          | 3          | 3          | 6          | 18          |
| Oral Cavity                    | 0         | 0        | 0         | 1         | 0         | 2         | 1         | 2         | 4          | 3          | 5          | 1          | 4          | 0          | 2          | 25          |
| Head & Neck                    | 0         | 0        | 0         | 0         | 0         | 0         | 0         | 3         | 4          | 4          | 2          | 2          | 5          | 1          | 4          | 25          |
| Esophagus                      | 0         | 0        | 0         | 0         | 0         | 0         | 0         | 1         | 2          | 1          | 5          | 4          | 2          | 4          | 3          | 22          |
| Stomach                        | 0         | 0        | 0         | 0         | 0         | 2         | 1         | 1         | 5          | 3          | 3          | 10         | 8          | 12         | 15         | 60          |
| Colon                          | 0         | 0        | 0         | 2         | 0         | 4         | 1         | 6         | 14         | 18         | 27         | 28         | 37         | 38         | 51         | 226         |
| Rectum                         | 0         | 0        | 0         | 0         | 0         | 2         | 4         | 4         | 7          | 19         | 21         | 25         | 25         | 16         | 27         | 150         |
| Liver                          | 1         | 0        | 0         | 0         | 0         | 0         | 1         | 1         | 0          | 1          | 2          | 2          | 2          | 3          | 4          | 17          |
| Gall Bladder & Biliary Tract   | 0         | 0        | 0         | 0         | 0         | 0         | 1         | 0         | 0          | 1          | 2          | 8          | 4          | 4          | 4          | 24          |
| Pancreas                       | 0         | 0        | 0         | 0         | 0         | 4         | 1         | 1         | 2          | 4          | 5          | 8          | 7          | 9          | 17         | 58          |
| Digestive Tract                | 0         | 0        | 0         | 0         | 0         | 0         | 0         | 0         | 0          | 0          | 0          | 1          | 1          | 3          | 2          | 7           |
| Larynx                         | 0         | 0        | 0         | 0         | 0         | 0         | 3         | 0         | 1          | 3          | 2          | 2          | 5          | 1          | 2          | 19          |
| Trachea, Bronchus & Lung       | 0         | 0        | 1         | 0         | 0         | 1         | 3         | 4         | 10         | 28         | 37         | 62         | 66         | 51         | 85         | 348         |
| Respiratory System             | 1         | 0        | 0         | 0         | 0         | 0         | 0         | 0         | 0          | 0          | 0          | 1          | 0          | 1          | 4          | 7           |
| Bone & Connective Tissue       | 1         | 1        | 1         | 0         | 0         | 0         | 1         | 0         | 1          | 2          | 1          | 2          | 1          | 2          | 1          | 14          |
| Malignant Melanoma of Skin     | 0         | 0        | 1         | 1         | 2         | 1         | 3         | 7         | 5          | 5          | 8          | 7          | 7          | 8          | 4          | 59          |
| Breast                         | 0         | 0        | 0         | 0         | 0         | 0         | 0         | 1         | 0          | 0          | 0          | 0          | 0          | 0          | 2          | 3           |
| Prostate                       | 0         | 0        | 0         | 0         | 1         | 0         | 4         | 13        | 35         | 62         | 110        | 130        | 199        | 131        | 140        | 825         |
| Male Genital Organs            | 0         | 0        | 4         | 5         | 2         | 6         | 6         | 5         | 2          | 2          | 2          | 1          | 1          | 0          | 4          | 40          |
| Kidney                         | 0         | 0        | 0         | 0         | 0         | 1         | 1         | 6         | 10         | 12         | 9          | 11         | 18         | 13         | 12         | 93          |
| Bladder                        | 0         | 0        | 0         | 0         | 0         | 0         | 0         | 3         | 4          | 7          | 5          | 13         | 15         | 20         | 37         | 104         |
| Other Urinary Tract            | 0         | 0        | 0         | 0         | 0         | 0         | 0         | 0         | 0          | 1          | 0          | 0          | 2          | 0          | 2          | 5           |
| Brain & Central Nervous System | 4         | 3        | 1         | 0         | 0         | 0         | 5         | 0         | 2          | 3          | 3          | 4          | 5          | 2          | 3          | 35          |
| Thyroid                        | 1         | 0        | 0         | 1         | 3         | 3         | 0         | 3         | 4          | 3          | 0          | 0          | 2          | 1          | 1          | 22          |
| Other Endocrine Glands         | 0         | 0        | 0         | 0         | 0         | 0         | 0         | 0         | 0          | 0          | 0          | 0          | 0          | 0          | 0          | 0           |
| Non-Hodgkin's Lymphoma         | 1         | 0        | 0         | 0         | 0         | 2         | 5         | 8         | 8          | 12         | 12         | 13         | 25         | 13         | 15         | 114         |
| Hodgkin's Disease              | 2         | 1        | 3         | 2         | 1         | 1         | 2         | 1         | 2          | 1          | 2          | 0          | 1          | 0          | 1          | 20          |
| Multiple Myeloma               | 0         | 0        | 0         | 0         | 0         | 0         | 0         | 1         | 0          | 6          | 2          | 5          | 5          | 5          | 7          | 31          |
| Leukemia                       | 8         | 2        | 1         | 2         | 3         | 2         | 2         | 3         | 7          | 4          | 8          | 7          | 14         | 8          | 27         | 98          |
| Primary Unknown                | 0         | 0        | 1         | 0         | 0         | 0         | 0         | 4         | 4          | 2          | 4          | 2          | 12         | 4          | 14         | 47          |
| Other Primaries                | 0         | 1        | 0         | 0         | 0         | 0         | 0         | 0         | 2          | 5          | 3          | 3          | 8          | 8          | 7          | 37          |
| <b>Total</b>                   | <b>19</b> | <b>8</b> | <b>13</b> | <b>14</b> | <b>12</b> | <b>31</b> | <b>46</b> | <b>78</b> | <b>135</b> | <b>212</b> | <b>282</b> | <b>355</b> | <b>484</b> | <b>361</b> | <b>503</b> | <b>2553</b> |
| Non-Melanoma Skin              | 2         | 0        | 0         | 1         | 6         | 11        | 31        | 47        | 85         | 105        | 111        | 152        | 232        | 253        | 498        | 1534        |
| Other In Situ                  | 2         | 0        | 1         | 0         | 2         | 2         | 6         | 6         | 9          | 15         | 19         | 33         | 51         | 50         | 99         | 295         |

INCIDENCE – AGE-SPECIFIC NUMBERS (MALE) – 2004

Age Group

| SITE                           | 0-14      | 15-19    | 20-24    | 25-29    | 30-34     | 35-39     | 40-44     | 45-49     | 50-54      | 55-59      | 60-64      | 65-69      | 70-74      | 75-79      | 80+        | All Ages    |
|--------------------------------|-----------|----------|----------|----------|-----------|-----------|-----------|-----------|------------|------------|------------|------------|------------|------------|------------|-------------|
| Lip                            | 0         | 0        | 0        | 0        | 0         | 0         | 0         | 0         | 1          | 1          | 1          | 0          | 4          | 4          | 8          | 19          |
| Oral Cavity                    | 0         | 0        | 0        | 0        | 0         | 0         | 1         | 2         | 4          | 3          | 4          | 2          | 0          | 1          | 1          | 18          |
| Head & Neck                    | 0         | 0        | 0        | 0        | 0         | 0         | 1         | 5         | 4          | 2          | 2          | 3          | 5          | 3          | 0          | 25          |
| Esophagus                      | 0         | 0        | 0        | 0        | 0         | 0         | 0         | 3         | 1          | 1          | 5          | 4          | 2          | 6          | 10         | 32          |
| Stomach                        | 0         | 0        | 0        | 0        | 0         | 0         | 0         | 2         | 5          | 2          | 4          | 7          | 11         | 8          | 10         | 49          |
| Colon                          | 0         | 0        | 0        | 0        | 0         | 0         | 4         | 6         | 10         | 22         | 22         | 36         | 36         | 36         | 46         | 218         |
| Rectum                         | 0         | 0        | 0        | 0        | 0         | 0         | 5         | 2         | 17         | 12         | 16         | 23         | 25         | 23         | 21         | 144         |
| Liver                          | 1         | 0        | 0        | 0        | 0         | 0         | 1         | 0         | 2          | 0          | 2          | 2          | 1          | 0          | 0          | 9           |
| Gall Bladder & Biliary Tract   | 0         | 0        | 0        | 0        | 0         | 0         | 0         | 0         | 2          | 2          | 1          | 6          | 5          | 2          | 2          | 20          |
| Pancreas                       | 0         | 0        | 0        | 0        | 0         | 0         | 0         | 2         | 3          | 6          | 4          | 8          | 5          | 9          | 11         | 48          |
| Digestive Tract                | 0         | 0        | 0        | 0        | 0         | 1         | 2         | 2         | 1          | 0          | 0          | 2          | 1          | 1          | 1          | 11          |
| Larynx                         | 0         | 0        | 0        | 0        | 0         | 0         | 1         | 2         | 2          | 2          | 1          | 3          | 8          | 2          | 3          | 24          |
| Trachea, Bronchus & Lung       | 0         | 0        | 0        | 0        | 1         | 0         | 2         | 6         | 14         | 27         | 38         | 45         | 67         | 49         | 62         | 311         |
| Respiratory System             | 0         | 1        | 0        | 0        | 0         | 2         | 0         | 1         | 1          | 0          | 4          | 0          | 2          | 3          | 1          | 15          |
| Bone & Connective Tissue       | 1         | 0        | 0        | 0        | 0         | 0         | 0         | 0         | 2          | 1          | 0          | 2          | 3          | 3          | 3          | 15          |
| Malignant Melanoma of Skin     | 0         | 0        | 1        | 0        | 2         | 0         | 4         | 7         | 4          | 7          | 4          | 4          | 4          | 2          | 8          | 47          |
| Breast                         | 0         | 0        | 0        | 0        | 0         | 0         | 0         | 0         | 1          | 1          | 0          | 0          | 0          | 2          | 0          | 4           |
| Prostate                       | 0         | 0        | 0        | 0        | 0         | 0         | 2         | 11        | 34         | 75         | 130        | 185        | 184        | 171        | 124        | 916         |
| Male Genital Organs            | 0         | 2        | 2        | 3        | 5         | 1         | 3         | 2         | 2          | 4          | 0          | 2          | 1          | 0          | 1          | 28          |
| Kidney                         | 1         | 0        | 0        | 0        | 0         | 3         | 2         | 5         | 3          | 6          | 9          | 13         | 14         | 11         | 14         | 81          |
| Bladder                        | 0         | 0        | 0        | 0        | 0         | 0         | 0         | 0         | 3          | 4          | 13         | 9          | 19         | 12         | 31         | 91          |
| Other Urinary Tract            | 0         | 0        | 0        | 0        | 1         | 0         | 0         | 0         | 0          | 0          | 0          | 0          | 2          | 0          | 1          | 4           |
| Brain & Central Nervous System | 2         | 2        | 0        | 2        | 2         | 0         | 0         | 4         | 1          | 4          | 5          | 3          | 3          | 5          | 1          | 34          |
| Thyroid                        | 0         | 1        | 0        | 0        | 0         | 0         | 1         | 1         | 2          | 2          | 2          | 0          | 3          | 1          | 0          | 13          |
| Other Endocrine Glands         | 0         | 0        | 0        | 0        | 1         | 0         | 0         | 0         | 0          | 0          | 0          | 1          | 0          | 0          | 0          | 2           |
| Non-Hodgkin's Lymphoma         | 1         | 1        | 1        | 0        | 2         | 2         | 9         | 8         | 7          | 14         | 4          | 16         | 11         | 18         | 23         | 117         |
| Hodgkin's Disease              | 1         | 0        | 3        | 1        | 3         | 0         | 0         | 3         | 0          | 1          | 1          | 0          | 0          | 0          | 1          | 14          |
| Multiple Myeloma               | 0         | 0        | 0        | 0        | 0         | 1         | 1         | 1         | 5          | 4          | 3          | 3          | 3          | 3          | 8          | 32          |
| Leukemia                       | 7         | 1        | 2        | 2        | 4         | 3         | 2         | 3         | 11         | 12         | 10         | 10         | 14         | 10         | 20         | 111         |
| Primary Unknown                | 0         | 0        | 0        | 0        | 0         | 1         | 1         | 1         | 2          | 4          | 6          | 10         | 3          | 11         | 14         | 53          |
| Other Primaries                | 0         | 0        | 0        | 1        | 0         | 0         | 1         | 0         | 2          | 2          | 2          | 2          | 8          | 14         | 11         | 43          |
| <b>Total</b>                   | <b>14</b> | <b>8</b> | <b>9</b> | <b>9</b> | <b>21</b> | <b>14</b> | <b>43</b> | <b>79</b> | <b>146</b> | <b>221</b> | <b>293</b> | <b>401</b> | <b>444</b> | <b>410</b> | <b>436</b> | <b>2548</b> |
| Non-Melanoma Skin              | 0         | 2        | 1        | 2        | 5         | 8         | 33        | 43        | 85         | 92         | 91         | 154        | 227        | 266        | 430        | 1439        |
| Other In Situ                  | 1         | 0        | 0        | 0        | 1         | 3         | 7         | 8         | 12         | 16         | 26         | 31         | 54         | 52         | 88         | 299         |



INCIDENCE – AGE-SPECIFIC RATES PER 100,000 (FEMALE) – 2003

Age Group

| SITE                           | 0-14     | 15-19     | 20-24       | 25-29     | 30-34        | 35-39        | 40-44        | 45-49        | 50-54        | 55-59        | 60-64        | 65-69         | 70-74         | 75-79         | 80+           | All Ages     |
|--------------------------------|----------|-----------|-------------|-----------|--------------|--------------|--------------|--------------|--------------|--------------|--------------|---------------|---------------|---------------|---------------|--------------|
| Lip                            | 0        | 0         | 0           | 0         | 0            | 0            | 0            | 0            | 0            | 7.9          | 0            | 0             | 0             | 0             | 0             | 0.4          |
| Oral Cavity                    | 0        | 0         | 0           | 0         | 0            | 0            | 2.5          | 5.3          | 9.7          | 7.9          | 19.4         | 0             | 16.4          | 5.9           | 20.4          | 4.3          |
| Head & Neck                    | 0        | 2.6       | 0           | 0         | 0            | 2.9          | 5            | 0            | 3.2          | 0            | 0            | 5.3           | 16.4          | 5.9           | 0             | 2            |
| Esophagus                      | 0        | 0         | 0           | 0         | 0            | 0            | 0            | 0            | 0            | 0            | 0            | 16            | 5.5           | 11.7          | 20.4          | 2.4          |
| Stomach                        | 0        | 0         | 0           | 0         | 0            | 0            | 2.5          | 0            | 6.4          | 15.9         | 9.7          | 10.7          | 10.9          | 11.7          | 30.6          | 4.7          |
| Colon                          | 0        | 0         | 0           | 0         | 3.3          | 0            | 7.6          | 23.8         | 6.4          | 47.6         | 77.7         | 165.5         | 147.2         | 228.8         | 248.6         | 41.9         |
| Rectum                         | 0        | 0         | 0           | 0         | 3.3          | 0            | 5            | 13.2         | 19.3         | 39.7         | 63.1         | 69.4          | 38.2          | 99.7          | 98.8          | 20.3         |
| Liver                          | 1        | 0         | 0           | 0         | 0            | 0            | 2.5          | 0            | 0            | 4            | 0            | 0             | 10.9          | 0             | 6.8           | 1.4          |
| Gall Bladder & Biliary Tract   | 0        | 0         | 0           | 0         | 0            | 0            | 0            | 0            | 0            | 15.9         | 19.4         | 5.3           | 10.9          | 35.2          | 17            | 4.3          |
| Pancreas                       | 0        | 0         | 0           | 0         | 0            | 2.9          | 0            | 0            | 0            | 4            | 4.9          | 48            | 54.5          | 64.5          | 64.7          | 10.2         |
| Digestive Tract                | 0        | 0         | 0           | 0         | 0            | 0            | 0            | 0            | 0            | 4            | 4.9          | 0             | 5.5           | 0             | 17            | 1.6          |
| Larynx                         | 0        | 0         | 0           | 0         | 0            | 0            | 0            | 0            | 3.2          | 0            | 0            | 5.3           | 0             | 5.9           | 3.4           | 0.8          |
| Trachea, Bronchus & Lung       | 0        | 0         | 0           | 3.2       | 0            | 2.9          | 5            | 29           | 38.7         | 119.1        | 150.5        | 224.2         | 294.3         | 275.7         | 166.9         | 55.1         |
| Respiratory System             | 0        | 0         | 0           | 3.2       | 0            | 2.9          | 2.5          | 2.6          | 3.2          | 0            | 0            | 5.3           | 5.5           | 0             | 0             | 1.4          |
| Bone & Connective Tissue       | 1        | 0         | 2.8         | 3.2       | 0            | 2.9          | 2.5          | 2.6          | 3.2          | 4            | 0            | 5.3           | 5.5           | 0             | 30.6          | 3.7          |
| Malignant Melanoma of Skin     | 0        | 0         | 5.5         | 6.4       | 0            | 11.7         | 7.6          | 18.5         | 41.9         | 15.9         | 19.4         | 21.4          | 16.4          | 17.6          | 27.2          | 11.2         |
| Breast                         | 0        | 2.6       | 0           | 9.6       | 26.2         | 32.3         | 85.8         | 153.2        | 180.6        | 321.6        | 305.8        | 363           | 441.5         | 375.5         | 401.9         | 127.1        |
| Cervix Invasive                | 0        | 2.6       | 2.8         | 3.2       | 16.4         | 8.8          | 22.7         | 21.1         | 25.8         | 11.9         | 4.9          | 5.3           | 16.4          | 5.9           | 13.6          | 9.6          |
| Uterus                         | 0        | 0         | 0           | 0         | 3.3          | 5.9          | 15.1         | 26.4         | 54.8         | 95.3         | 72.8         | 90.7          | 65.4          | 88            | 27.2          | 25           |
| Ovary                          | 0        | 0         | 0           | 0         | 3.3          | 2.9          | 0            | 15.8         | 19.3         | 43.7         | 24.3         | 37.4          | 21.8          | 46.9          | 47.7          | 12.4         |
| Female Genital Organs          | 0        | 0         | 0           | 0         | 0            | 2.9          | 5            | 2.6          | 9.7          | 11.9         | 4.9          | 21.4          | 43.6          | 0             | 6.8           | 4.9          |
| Kidney                         | 0        | 0         | 0           | 3.2       | 0            | 2.9          | 5            | 5.3          | 16.1         | 7.9          | 38.8         | 10.7          | 27.3          | 29.3          | 23.8          | 7.9          |
| Bladder                        | 0        | 0         | 2.8         | 0         | 0            | 0            | 0            | 2.6          | 3.2          | 4            | 4.9          | 21.4          | 21.8          | 41.1          | 64.7          | 7.7          |
| Other Urinary Tract            | 0        | 0         | 0           | 0         | 0            | 0            | 2.5          | 2.6          | 0            | 0            | 4.9          | 0             | 5.5           | 0             | 6.8           | 1.2          |
| Brain & Central Nervous System | 2        | 2.6       | 5.5         | 6.4       | 6.6          | 8.8          | 2.5          | 2.6          | 6.4          | 4            | 4.9          | 10.7          | 10.9          | 17.6          | 17            | 5.9          |
| Thyroid                        | 1        | 7.8       | 5.5         | 6.4       | 23           | 17.6         | 17.7         | 0            | 6.4          | 4            | 34           | 26.7          | 5.5           | 11.7          | 3.4           | 9.2          |
| Other Endocrine Glands         | 0        | 0         | 0           | 0         | 0            | 0            | 0            | 0            | 3.2          | 0            | 0            | 0             | 0             | 0             | 0             | 0.2          |
| Non-Hodgkin's Lymphoma         | 0        | 2.6       | 0           | 6.4       | 9.8          | 2.9          | 5            | 7.9          | 16.1         | 35.7         | 34           | 48            | 54.5          | 70.4          | 88.5          | 17.7         |
| Hodgkin's Disease              | 0        | 2.6       | 2.8         | 6.4       | 0            | 0            | 2.5          | 0            | 3.2          | 4            | 0            | 5.3           | 0             | 0             | 0             | 1.6          |
| Multiple Myeloma               | 0        | 0         | 0           | 0         | 0            | 0            | 2.5          | 0            | 9.7          | 4            | 0            | 5.3           | 16.4          | 35.2          | 20.4          | 4.1          |
| Leukemia                       | 3        | 2.6       | 0           | 6.4       | 0            | 2.9          | 2.5          | 15.8         | 19.3         | 7.9          | 24.3         | 32            | 60            | 58.7          | 40.9          | 13           |
| Primary Unknown                | 0        | 0         | 0           | 0         | 0            | 0            | 7.6          | 0            | 12.9         | 4            | 29.1         | 16            | 27.3          | 41.1          | 74.9          | 10           |
| Other Primaries                | 1        | 0         | 0           | 0         | 6.6          | 0            | 2.5          | 7.9          | 9.7          | 7.9          | 9.7          | 48            | 43.6          | 41.1          | 61.3          | 11           |
| <b>Total</b>                   | <b>9</b> | <b>26</b> | <b>27.7</b> | <b>64</b> | <b>101.8</b> | <b>114.1</b> | <b>221.6</b> | <b>358.8</b> | <b>531.6</b> | <b>853.7</b> | <b>966.3</b> | <b>1323.6</b> | <b>1499.6</b> | <b>1625.1</b> | <b>1651.3</b> | <b>434.2</b> |

INCIDENCE – AGE-SPECIFIC RATES PER 100,000 (FEMALE) – 2004

| SITE                           | Age Group |             |             |             |             |             |              |              |              |              |               |               |               |             |               | All Ages     |
|--------------------------------|-----------|-------------|-------------|-------------|-------------|-------------|--------------|--------------|--------------|--------------|---------------|---------------|---------------|-------------|---------------|--------------|
|                                | 0-14      | 15-19       | 20-24       | 25-29       | 30-34       | 35-39       | 40-44        | 45-49        | 50-54        | 55-59        | 60-64         | 65-69         | 70-74         | 75-79       | 80+           |              |
| Lip                            | 0         | 0           | 0           | 0           | 0           | 0           | 0            | 0            | 0            | 0            | 0             | 5.4           | 0             | 5.9         | 13.4          | 1.2          |
| Oral Cavity                    | 0         | 0           | 0           | 0           | 0           | 0           | 2.5          | 0            | 0            | 0            | 0             | 5.4           | 27.4          | 17.8        | 20.2          | 3.1          |
| Head & Neck                    | 0         | 0           | 2.7         | 0           | 0           | 6.1         | 0            | 2.6          | 3.1          | 3.7          | 0             | 5.4           | 0             | 11.9        | 6.7           | 2.1          |
| Esophagus                      | 0         | 0           | 0           | 0           | 0           | 0           | 0            | 2.6          | 0            | 3.7          | 0             | 5.4           | 5.5           | 11.9        | 10.1          | 1.8          |
| Stomach                        | 0         | 0           | 0           | 0           | 0           | 0           | 0            | 2.6          | 3.1          | 0            | 9.5           | 21.4          | 11            | 11.9        | 50.4          | 5.3          |
| Colon                          | 1         | 0           | 0           | 0           | 3.3         | 3.1         | 2.5          | 10.4         | 27.7         | 44.9         | 114           | 123.3         | 175.7         | 219.9       | 258.9         | 43.3         |
| Rectum                         | 0         | 0           | 0           | 0           | 0           | 0           | 2.5          | 13           | 15.4         | 33.7         | 42.7          | 42.9          | 76.8          | 107         | 80.7          | 18.1         |
| Liver                          | 0         | 0           | 0           | 0           | 0           | 0           | 2.5          | 0            | 0            | 0            | 0             | 0             | 5.5           | 5.9         | 3.4           | 0.8          |
| Gall Bladder & Biliary Tract   | 0         | 0           | 0           | 0           | 0           | 0           | 0            | 2.6          | 3.1          | 7.5          | 4.7           | 21.4          | 16.5          | 23.8        | 20.2          | 4.3          |
| Pancreas                       | 0         | 0           | 0           | 0           | 0           | 0           | 2.5          | 2.6          | 6.1          | 11.2         | 19            | 42.9          | 27.4          | 35.7        | 67.2          | 9.8          |
| Digestive Tract                | 0         | 0           | 0           | 0           | 0           | 0           | 0            | 0            | 0            | 7.5          | 4.7           | 0             | 0             | 5.9         | 16.8          | 1.8          |
| Larynx                         | 0         | 0           | 0           | 0           | 0           | 0           | 2.5          | 2.6          | 0            | 0            | 4.7           | 0             | 11            | 0           | 0             | 1            |
| Trachea, Bronchus & Lung       | 0         | 0           | 2.7         | 0           | 0           | 0           | 7.6          | 31.1         | 27.7         | 104.7        | 166.2         | 241.3         | 214.1         | 326.9       | 134.5         | 52.1         |
| Respiratory System             | 0         | 2.6         | 0           | 0           | 0           | 0           | 0            | 0            | 0            | 3.7          | 0             | 0             | 11            | 0           | 10.1          | 1.4          |
| Bone & Connective Tissue       | 0         | 5.1         | 2.7         | 0           | 0           | 0           | 0            | 5.2          | 0            | 3.7          | 0             | 5.4           | 11            | 0           | 20.2          | 2.9          |
| Malignant Melanoma of Skin     | 0         | 2.6         | 0           | 0           | 9.8         | 6.1         | 17.7         | 18.1         | 24.6         | 18.7         | 19            | 10.7          | 16.5          | 41.6        | 30.3          | 11.3         |
| Breast                         | 0         | 0           | 0           | 3.1         | 26.2        | 43          | 123.6        | 171          | 190.6        | 231.8        | 327.7         | 343.1         | 406.2         | 404.1       | 349.7         | 125.1        |
| Cervix Invasive                | 0         | 0           | 2.7         | 15.4        | 3.3         | 9.2         | 15.1         | 20.7         | 18.4         | 7.5          | 4.7           | 10.7          | 5.5           | 29.7        | 6.7           | 8.4          |
| Uterus                         | 0         | 0           | 2.7         | 3.1         | 0           | 3.1         | 12.6         | 18.1         | 40           | 56.1         | 118.7         | 101.9         | 87.8          | 83.2        | 33.6          | 24.8         |
| Ovary                          | 1         | 2.6         | 0           | 0           | 0           | 0           | 10.1         | 10.4         | 9.2          | 22.4         | 19            | 48.3          | 65.9          | 41.6        | 30.3          | 11.7         |
| Female Genital Organs          | 0         | 0           | 0           | 0           | 0           | 0           | 5            | 7.8          | 0            | 3.7          | 9.5           | 5.4           | 16.5          | 11.9        | 33.6          | 4.7          |
| Kidney                         | 0         | 0           | 0           | 3.1         | 3.3         | 6.1         | 2.5          | 15.5         | 3.1          | 18.7         | 19            | 16.1          | 22            | 35.7        | 23.5          | 8            |
| Bladder                        | 0         | 0           | 0           | 0           | 0           | 0           | 2.5          | 2.6          | 6.1          | 7.5          | 0             | 5.4           | 22            | 35.7        | 26.9          | 4.9          |
| Other Urinary Tract            | 0         | 0           | 0           | 0           | 0           | 0           | 0            | 0            | 0            | 0            | 0             | 10.7          | 5.5           | 23.8        | 10.1          | 2            |
| Brain & Central Nervous System | 3         | 2.6         | 0           | 0           | 0           | 0           | 2.5          | 2.6          | 0            | 11.2         | 19            | 10.7          | 11            | 11.9        | 16.8          | 4.7          |
| Thyroid                        | 0         | 2.6         | 5.3         | 3.1         | 6.5         | 9.2         | 5            | 20.7         | 18.4         | 7.5          | 19            | 16.1          | 16.5          | 11.9        | 13.4          | 8.4          |
| Other Endocrine Glands         | 0         | 0           | 0           | 3.1         | 3.3         | 0           | 0            | 0            | 0            | 0            | 0             | 0             | 0             | 0           | 0             | 0.4          |
| Non-Hodgkin's Lymphoma         | 0         | 0           | 2.7         | 3.1         | 0           | 9.2         | 10.1         | 10.4         | 12.3         | 33.7         | 23.7          | 75.1          | 49.4          | 35.7        | 67.2          | 15.6         |
| Hodgkin's Disease              | 0         | 2.6         | 0           | 3.1         | 0           | 0           | 2.5          | 2.6          | 0            | 3.7          | 4.7           | 0             | 5.5           | 0           | 3.4           | 1.6          |
| Multiple Myeloma               | 0         | 0           | 0           | 0           | 0           | 0           | 0            | 2.6          | 9.2          | 3.7          | 19            | 26.8          | 22            | 35.7        | 16.8          | 5.7          |
| Leukemia                       | 1         | 0           | 5.3         | 3.1         | 0           | 0           | 12.6         | 10.4         | 12.3         | 15           | 19            | 10.7          | 38.4          | 47.5        | 57.2          | 11.5         |
| Primary Unknown                | 0         | 0           | 0           | 0           | 0           | 0           | 2.5          | 10.4         | 9.2          | 15           | 14.2          | 26.8          | 27.4          | 101         | 63.9          | 11.9         |
| Other Primaries                | 0         | 0           | 0           | 0           | 0           | 0           | 2.5          | 2.6          | 9.2          | 11.2         | 23.7          | 32.2          | 16.5          | 47.5        | 30.3          | 7.6          |
| <b>Total</b>                   | <b>6</b>  | <b>20.7</b> | <b>26.8</b> | <b>40.2</b> | <b>55.7</b> | <b>95.1</b> | <b>249.4</b> | <b>401.8</b> | <b>448.8</b> | <b>691.7</b> | <b>1025.4</b> | <b>1270.9</b> | <b>1427.5</b> | <b>1783</b> | <b>1526.5</b> | <b>417.3</b> |

INCIDENCE – AGE-SPECIFIC RATES PER 100,000 (MALE) – 2003

Age Group

| SITE                           | 0-14        | 15-19       | 20-24     | 25-29       | 30-34       | 35-39       | 40-44        | 45-49        | 50-54        | 55-59        | 60-64         | 65-69         | 70-74         | 75-79         | 80+           | All Ages     |
|--------------------------------|-------------|-------------|-----------|-------------|-------------|-------------|--------------|--------------|--------------|--------------|---------------|---------------|---------------|---------------|---------------|--------------|
| Lip                            | 0           | 0           | 0         | 0           | 0           | 0           | 2.5          | 0            | 0            | 0            | 9.9           | 17            | 18.3          | 22.2          | 36.3          | 3.6          |
| Oral Cavity                    | 0           | 0           | 0         | 3.1         | 0           | 6           | 2.5          | 5.2          | 12.4         | 11.6         | 24.8          | 5.7           | 24.4          | 0             | 12.1          | 5            |
| Head & Neck                    | 0           | 0           | 0         | 0           | 0           | 0           | 0            | 7.7          | 12.4         | 15.5         | 9.9           | 11.4          | 30.5          | 7.4           | 24.2          | 5            |
| Esophagus                      | 0           | 0           | 0         | 0           | 0           | 0           | 0            | 2.6          | 6.2          | 3.9          | 24.8          | 22.7          | 12.2          | 29.6          | 18.1          | 4.4          |
| Stomach                        | 0           | 0           | 0         | 0           | 0           | 6           | 2.5          | 2.6          | 15.6         | 11.6         | 14.9          | 56.8          | 48.8          | 88.9          | 90.7          | 12           |
| Colon                          | 0           | 0           | 0         | 6.2         | 0           | 11.9        | 2.5          | 15.5         | 43.5         | 69.8         | 133.8         | 159           | 225.7         | 281.6         | 308.3         | 45.2         |
| Rectum                         | 0           | 0           | 0         | 0           | 0           | 6           | 10.1         | 10.3         | 21.8         | 73.6         | 104           | 142           | 152.5         | 118.6         | 163.2         | 30           |
| Liver                          | 1           | 0           | 0         | 0           | 0           | 0           | 2.5          | 2.6          | 0            | 3.9          | 9.9           | 11.4          | 12.2          | 22.2          | 24.2          | 3.4          |
| Gall Bladder & Biliary Tract   | 0           | 0           | 0         | 0           | 0           | 0           | 2.5          | 0            | 0            | 3.9          | 9.9           | 45.4          | 24.4          | 29.6          | 24.2          | 4.8          |
| Pancreas                       | 0           | 0           | 0         | 0           | 0           | 11.9        | 2.5          | 2.6          | 6.2          | 15.5         | 24.8          | 45.4          | 42.7          | 66.7          | 102.8         | 11.6         |
| Digestive Tract                | 0           | 0           | 0         | 0           | 0           | 0           | 0            | 0            | 0            | 0            | 0             | 5.7           | 6.1           | 22.2          | 12.1          | 1.4          |
| Larynx                         | 0           | 0           | 0         | 0           | 0           | 0           | 7.6          | 0            | 3.1          | 11.6         | 9.9           | 11.4          | 30.5          | 7.4           | 12.1          | 3.8          |
| Trachea, Bronchus & Lung       | 0           | 0           | 2.6       | 0           | 0           | 3           | 7.6          | 10.3         | 31.1         | 108.5        | 183.3         | 352.1         | 402.5         | 378           | 513.8         | 69.7         |
| Respiratory System             | 1           | 0           | 0         | 0           | 0           | 0           | 0            | 0            | 0            | 0            | 0             | 5.7           | 0             | 7.4           | 24.2          | 1.4          |
| Bone & Connective Tissue       | 1           | 2.5         | 2.6       | 0           | 0           | 0           | 2.5          | 0            | 3.1          | 7.8          | 5             | 11.4          | 6.1           | 14.8          | 6             | 2.8          |
| Malignant Melanoma of Skin     | 0           | 0           | 2.6       | 3.1         | 6.6         | 3           | 7.6          | 18.1         | 15.6         | 19.4         | 39.6          | 39.8          | 42.7          | 59.3          | 24.2          | 11.8         |
| Breast                         | 0           | 0           | 0         | 0           | 0           | 0           | 0            | 2.6          | 0            | 0            | 0             | 0             | 0             | 0             | 12.1          | 0.6          |
| Prostate                       | 0           | 0           | 0         | 0           | 3.3         | 0           | 10.1         | 33.5         | 108.9        | 240.3        | 544.9         | 738.3         | 1213.7        | 970.9         | 846.2         | 165.2        |
| Male Genital Organs            | 0           | 0           | 10.5      | 15.6        | 6.6         | 17.9        | 15.1         | 12.9         | 6.2          | 7.8          | 9.9           | 5.7           | 6.1           | 0             | 24.2          | 8            |
| Kidney                         | 0           | 0           | 0         | 0           | 0           | 3           | 2.5          | 15.5         | 31.1         | 46.5         | 44.6          | 62.5          | 109.8         | 96.3          | 72.5          | 18.6         |
| Bladder                        | 0           | 0           | 0         | 0           | 0           | 0           | 0            | 7.7          | 12.4         | 27.1         | 24.8          | 73.8          | 91.5          | 148.2         | 223.6         | 20.8         |
| Other Urinary Tract            | 0           | 0           | 0         | 0           | 0           | 0           | 0            | 0            | 0            | 3.9          | 0             | 0             | 12.2          | 0             | 12.1          | 1            |
| Brain & Central Nervous System | 3.8         | 7.4         | 2.6       | 0           | 0           | 0           | 12.6         | 0            | 6.2          | 11.6         | 14.9          | 22.7          | 30.5          | 14.8          | 18.1          | 7            |
| Thyroid                        | 1           | 0           | 0         | 3.1         | 9.9         | 9           | 0            | 7.7          | 12.4         | 11.6         | 0             | 0             | 12.2          | 7.4           | 6             | 4.4          |
| Other Endocrine Glands         | 0           | 0           | 0         | 0           | 0           | 0           | 0            | 0            | 0            | 0            | 0             | 0             | 0             | 0             | 0             | 0            |
| Non-Hodgkin's Lymphoma         | 1           | 0           | 0         | 0           | 0           | 6           | 12.6         | 20.6         | 24.9         | 46.5         | 59.4          | 73.8          | 152.5         | 96.3          | 90.7          | 22.8         |
| Hodgkin's Disease              | 1.9         | 2.5         | 7.9       | 6.2         | 3.3         | 3           | 5            | 2.6          | 6.2          | 3.9          | 9.9           | 0             | 6.1           | 0             | 6             | 4            |
| Multiple Myeloma               | 0           | 0           | 0         | 0           | 0           | 0           | 0            | 2.6          | 0            | 23.3         | 9.9           | 28.4          | 30.5          | 37.1          | 42.3          | 6.2          |
| Leukemia                       | 7.7         | 4.9         | 2.6       | 6.2         | 9.9         | 6           | 5            | 7.7          | 21.8         | 15.5         | 39.6          | 39.8          | 85.4          | 59.3          | 163.2         | 19.6         |
| Primary Unknown                | 0           | 0           | 2.6       | 0           | 0           | 0           | 0            | 10.3         | 12.4         | 7.8          | 19.8          | 11.4          | 73.2          | 29.6          | 84.6          | 9.4          |
| Other Primaries                | 0           | 2.5         | 0         | 0           | 0           | 0           | 0            | 0            | 6.2          | 19.4         | 14.9          | 17            | 48.8          | 59.3          | 42.3          | 7.4          |
| <b>Total</b>                   | <b>18.4</b> | <b>19.8</b> | <b>34</b> | <b>43.5</b> | <b>39.6</b> | <b>92.7</b> | <b>115.8</b> | <b>201.2</b> | <b>419.7</b> | <b>821.8</b> | <b>1397.1</b> | <b>2016.3</b> | <b>2952.1</b> | <b>2675.1</b> | <b>3040.4</b> | <b>510.9</b> |

INCIDENCE – AGE-SPECIFIC RATES PER 100,000 (MALE) – 2004

Age Group

| SITE                           | 0-14        | 15-19       | 20-24       | 25-29       | 30-34       | 35-39     | 40-44        | 45-49        | 50-54        | 55-59        | 60-64         | 65-69         | 70-74         | 75-79         | 80+           | All Ages     |
|--------------------------------|-------------|-------------|-------------|-------------|-------------|-----------|--------------|--------------|--------------|--------------|---------------|---------------|---------------|---------------|---------------|--------------|
| Lip                            | 0           | 0           | 0           | 0           | 0           | 0         | 0            | 0            | 3            | 3.7          | 4.8           | 0             | 24.7          | 29.7          | 47.6          | 3.8          |
| Oral Cavity                    | 0           | 0           | 0           | 0           | 0           | 0         | 2.5          | 5.1          | 11.8         | 11           | 19.3          | 11.3          | 0             | 7.4           | 5.9           | 3.6          |
| Head & Neck                    | 0           | 0           | 0           | 0           | 0           | 0         | 2.5          | 12.7         | 11.8         | 7.3          | 9.6           | 16.9          | 30.9          | 22.3          | 0             | 4.9          |
| Esophagus                      | 0           | 0           | 0           | 0           | 0           | 0         | 0            | 7.6          | 3            | 3.7          | 24.1          | 22.6          | 12.4          | 44.5          | 59.5          | 6.3          |
| Stomach                        | 0           | 0           | 0           | 0           | 0           | 0         | 0            | 5.1          | 14.8         | 7.3          | 19.3          | 39.5          | 68            | 59.3          | 59.5          | 9.7          |
| Colon                          | 0           | 0           | 0           | 0           | 0           | 0         | 10.1         | 15.2         | 29.6         | 80.7         | 106.1         | 203.3         | 222.5         | 267           | 273.7         | 43.1         |
| Rectum                         | 0           | 0           | 0           | 0           | 0           | 0         | 12.6         | 5.1          | 50.3         | 44           | 77.2          | 129.9         | 154.5         | 170.6         | 124.9         | 28.5         |
| Liver                          | 1           | 0           | 0           | 0           | 0           | 0         | 2.5          | 0            | 5.9          | 0            | 9.6           | 11.3          | 6.2           | 0             | 0             | 1.8          |
| Gall Bladder & Biliary Tract   | 0           | 0           | 0           | 0           | 0           | 0         | 0            | 0            | 5.9          | 7.3          | 4.8           | 33.9          | 30.9          | 14.8          | 11.9          | 4            |
| Pancreas                       | 0           | 0           | 0           | 0           | 0           | 0         | 0            | 5.1          | 8.9          | 22           | 19.3          | 45.2          | 30.9          | 66.8          | 65.4          | 9.5          |
| Digestive Tract                | 0           | 0           | 0           | 0           | 0           | 3.1       | 5.1          | 5.1          | 3            | 0            | 0             | 11.3          | 6.2           | 7.4           | 5.9           | 2.2          |
| Larynx                         | 0           | 0           | 0           | 0           | 0           | 0         | 2.5          | 5.1          | 5.9          | 7.3          | 4.8           | 16.9          | 49.4          | 14.8          | 17.8          | 4.7          |
| Trachea, Bronchus & Lung       | 0           | 0           | 0           | 0           | 3.2         | 0         | 5.1          | 15.2         | 41.5         | 99.1         | 183.3         | 254.1         | 414.1         | 363.4         | 368.9         | 61.5         |
| Respiratory System             | 0           | 2.4         | 0           | 0           | 0           | 6.1       | 0            | 2.5          | 3            | 0            | 19.3          | 0             | 12.4          | 22.3          | 5.9           | 3            |
| Bone & Connective Tissue       | 1           | 0           | 0           | 0           | 0           | 0         | 0            | 0            | 5.9          | 3.7          | 0             | 11.3          | 18.5          | 22.3          | 17.8          | 3            |
| Malignant Melanoma of Skin     | 0           | 0           | 2.5         | 0           | 6.5         | 0         | 10.1         | 17.8         | 11.8         | 25.7         | 19.3          | 22.6          | 24.7          | 14.8          | 47.6          | 9.3          |
| Breast                         | 0           | 0           | 0           | 0           | 0           | 0         | 0            | 0            | 3            | 3.7          | 0             | 0             | 0             | 14.8          | 0             | 0.8          |
| Prostate                       | 0           | 0           | 0           | 0           | 0           | 0         | 5.1          | 27.9         | 100.7        | 275.2        | 627.2         | 1044.6        | 1137.2        | 1268.4        | 737.7         | 181.2        |
| Male Genital Organs            | 0           | 4.9         | 5.1         | 8.9         | 16.2        | 3.1       | 7.6          | 5.1          | 5.9          | 14.7         | 0             | 11.3          | 6.2           | 0             | 5.9           | 5.5          |
| Kidney                         | 1           | 0           | 0           | 0           | 0           | 9.2       | 5.1          | 12.7         | 8.9          | 22           | 43.4          | 73.4          | 86.5          | 81.6          | 83.3          | 16           |
| Bladder                        | 0           | 0           | 0           | 0           | 0           | 0         | 0            | 0            | 8.9          | 14.7         | 62.7          | 50.8          | 117.4         | 89            | 184.4         | 18           |
| Other Urinary Tract            | 0           | 0           | 0           | 0           | 3.2         | 0         | 0            | 0            | 0            | 0            | 0             | 0             | 12.4          | 0             | 5.9           | 0.8          |
| Brain & Central Nervous System | 1.9         | 4.9         | 0           | 5.9         | 6.5         | 0         | 0            | 10.1         | 3            | 14.7         | 24.1          | 16.9          | 18.5          | 37.1          | 5.9           | 6.7          |
| Thyroid                        | 0           | 2.4         | 0           | 0           | 0           | 0         | 2.5          | 2.5          | 5.9          | 7.3          | 9.6           | 0             | 18.5          | 7.4           | 0             | 2.6          |
| Other Endocrine Glands         | 0           | 0           | 0           | 0           | 3.2         | 0         | 0            | 0            | 0            | 0            | 0             | 5.6           | 0             | 0             | 0             | 0.4          |
| Non-Hodgkin's Lymphoma         | 1           | 2.4         | 2.5         | 0           | 6.5         | 6.1       | 22.7         | 20.3         | 20.7         | 51.4         | 19.3          | 90.3          | 68            | 133.5         | 136.8         | 23.1         |
| Hodgkin's Disease              | 1           | 0           | 7.6         | 3           | 9.7         | 0         | 0            | 7.6          | 0            | 3.7          | 4.8           | 0             | 0             | 0             | 5.9           | 2.8          |
| Multiple Myeloma               | 0           | 0           | 0           | 0           | 0           | 3.1       | 2.5          | 2.5          | 14.8         | 14.7         | 14.5          | 16.9          | 18.5          | 22.3          | 47.6          | 6.3          |
| Leukemia                       | 6.8         | 2.4         | 5.1         | 5.9         | 12.9        | 9.2       | 5.1          | 7.6          | 32.6         | 44           | 48.2          | 56.5          | 86.5          | 74.2          | 119           | 22           |
| Primary Unknown                | 0           | 0           | 0           | 0           | 0           | 3.1       | 2.5          | 2.5          | 5.9          | 14.7         | 28.9          | 56.5          | 18.5          | 81.6          | 83.3          | 10.5         |
| Other Primaries                | 0           | 0           | 0           | 3           | 0           | 0         | 2.5          | 0            | 5.9          | 7.3          | 9.6           | 11.3          | 49.4          | 103.8         | 65.4          | 8.5          |
| <b>Total</b>                   | <b>13.7</b> | <b>19.4</b> | <b>22.8</b> | <b>26.7</b> | <b>67.9</b> | <b>43</b> | <b>108.6</b> | <b>200.4</b> | <b>432.3</b> | <b>810.9</b> | <b>1413.1</b> | <b>2264.2</b> | <b>2743.9</b> | <b>3041.1</b> | <b>2593.4</b> | <b>504.1</b> |

MORTALITY – AGE-SPECIFIC NUMBERS (FEMALE) – 2003

| SITE                           | Age Group |          |          |          |          |           |           |           |           |           |           |            |            |            |            | All Ages    |
|--------------------------------|-----------|----------|----------|----------|----------|-----------|-----------|-----------|-----------|-----------|-----------|------------|------------|------------|------------|-------------|
|                                | 0-14      | 15-19    | 20-24    | 25-29    | 30-34    | 35-39     | 40-44     | 45-49     | 50-54     | 55-59     | 60-64     | 65-69      | 70-74      | 75-79      | 80+        |             |
| Lip                            | 0         | 0        | 0        | 0        | 0        | 0         | 0         | 0         | 0         | 0         | 0         | 0          | 0          | 0          | 0          | 0           |
| Oral Cavity                    | 0         | 0        | 0        | 0        | 0        | 0         | 0         | 0         | 0         | 1         | 4         | 0          | 0          | 0          | 8          | 13          |
| Head & Neck                    | 0         | 0        | 0        | 0        | 0        | 0         | 0         | 0         | 0         | 0         | 1         | 1          | 0          | 1          | 0          | 3           |
| Esophagus                      | 0         | 0        | 0        | 0        | 0        | 0         | 0         | 0         | 0         | 1         | 0         | 0          | 2          | 1          | 7          | 11          |
| Stomach                        | 0         | 0        | 0        | 0        | 0        | 0         | 0         | 0         | 1         | 0         | 0         | 0          | 0          | 0          | 15         | 16          |
| Colon                          | 0         | 0        | 0        | 0        | 1        | 0         | 0         | 2         | 1         | 6         | 4         | 11         | 10         | 20         | 43         | 98          |
| Rectum                         | 0         | 0        | 0        | 0        | 1        | 0         | 0         | 2         | 0         | 0         | 2         | 2          | 4          | 5          | 8          | 24          |
| Liver                          | 0         | 0        | 0        | 0        | 0        | 0         | 1         | 0         | 0         | 0         | 0         | 0          | 2          | 0          | 0          | 3           |
| Gall Bladder & Biliary Tract   | 0         | 0        | 0        | 0        | 0        | 0         | 0         | 0         | 1         | 1         | 3         | 1          | 1          | 9          | 7          | 23          |
| Pancreas                       | 0         | 0        | 0        | 0        | 0        | 1         | 2         | 1         | 2         | 0         | 2         | 5          | 8          | 7          | 20         | 48          |
| Digestive Tract                | 0         | 0        | 0        | 0        | 0        | 0         | 0         | 0         | 0         | 0         | 3         | 3          | 0          | 0          | 4          | 10          |
| Larynx                         | 0         | 0        | 0        | 0        | 0        | 0         | 0         | 1         | 0         | 0         | 2         | 0          | 0          | 0          | 3          | 6           |
| Trachea, Bronchus & Lung       | 0         | 0        | 0        | 0        | 0        | 1         | 1         | 3         | 6         | 19        | 23        | 41         | 35         | 39         | 64         | 232         |
| Respiratory System             | 0         | 0        | 0        | 0        | 0        | 0         | 1         | 0         | 1         | 0         | 0         | 0          | 1          | 0          | 0          | 3           |
| Bone & Connective Tissue       | 0         | 0        | 0        | 0        | 0        | 1         | 0         | 1         | 0         | 0         | 1         | 2          | 0          | 1          | 1          | 7           |
| Malignant Melanoma of Skin     | 0         | 0        | 0        | 0        | 1        | 1         | 1         | 0         | 1         | 2         | 1         | 0          | 0          | 2          | 2          | 11          |
| Breast                         | 0         | 1        | 0        | 1        | 2        | 5         | 4         | 8         | 8         | 12        | 10        | 17         | 24         | 16         | 60         | 168         |
| Cervix Invasive                | 0         | 0        | 0        | 1        | 2        | 0         | 0         | 1         | 1         | 1         | 2         | 2          | 0          | 1          | 2          | 13          |
| Uterus                         | 0         | 0        | 0        | 0        | 0        | 0         | 0         | 1         | 1         | 2         | 1         | 3          | 3          | 4          | 4          | 19          |
| Ovary                          | 0         | 0        | 0        | 0        | 0        | 0         | 0         | 2         | 5         | 3         | 3         | 8          | 7          | 9          | 13         | 50          |
| Female Genital Organs          | 0         | 0        | 0        | 0        | 0        | 0         | 1         | 0         | 0         | 0         | 0         | 1          | 0          | 0          | 3          | 5           |
| Kidney                         | 0         | 0        | 0        | 0        | 0        | 1         | 0         | 0         | 1         | 1         | 1         | 3          | 4          | 3          | 6          | 20          |
| Bladder                        | 0         | 0        | 0        | 0        | 0        | 0         | 0         | 1         | 0         | 1         | 1         | 3          | 3          | 3          | 9          | 21          |
| Other Urinary Tract            | 0         | 0        | 0        | 0        | 0        | 0         | 0         | 0         | 0         | 0         | 0         | 0          | 0          | 0          | 0          | 0           |
| Brain & Central Nervous System | 0         | 0        | 0        | 0        | 0        | 1         | 2         | 0         | 2         | 2         | 3         | 2          | 1          | 1          | 7          | 21          |
| Thyroid                        | 0         | 0        | 0        | 0        | 0        | 0         | 0         | 1         | 0         | 0         | 0         | 0          | 0          | 0          | 2          | 3           |
| Other Endocrine Glands         | 0         | 0        | 0        | 0        | 0        | 0         | 0         | 0         | 0         | 0         | 0         | 1          | 0          | 0          | 0          | 1           |
| Non-Hodgkin's Lymphoma         | 0         | 1        | 0        | 0        | 0        | 0         | 0         | 0         | 0         | 3         | 2         | 2          | 5          | 7          | 21         | 41          |
| Hodgkin's Disease              | 0         | 0        | 0        | 0        | 0        | 0         | 0         | 0         | 0         | 0         | 0         | 0          | 0          | 1          | 0          | 1           |
| Multiple Myeloma               | 0         | 0        | 0        | 0        | 0        | 0         | 0         | 0         | 0         | 1         | 3         | 0          | 4          | 4          | 2          | 14          |
| Leukemia                       | 1         | 0        | 0        | 0        | 0        | 0         | 1         | 0         | 0         | 0         | 4         | 4          | 3          | 4          | 15         | 32          |
| Primary Unknown                | 0         | 0        | 0        | 0        | 0        | 0         | 5         | 1         | 4         | 2         | 10        | 4          | 9          | 10         | 35         | 80          |
| Other Primaries                | 0         | 0        | 0        | 0        | 0        | 0         | 0         | 0         | 0         | 0         | 0         | 2          | 2          | 1          | 4          | 9           |
| <b>Total</b>                   | <b>1</b>  | <b>2</b> | <b>0</b> | <b>2</b> | <b>7</b> | <b>11</b> | <b>19</b> | <b>25</b> | <b>35</b> | <b>58</b> | <b>86</b> | <b>118</b> | <b>128</b> | <b>149</b> | <b>365</b> | <b>1006</b> |

MORTALITY – AGE-SPECIFIC NUMBERS (FEMALE) – 2004

| SITE                           | Age Group |          |          |          |          |          |          |           |           |           |           |            |            |            |            | All Ages   |
|--------------------------------|-----------|----------|----------|----------|----------|----------|----------|-----------|-----------|-----------|-----------|------------|------------|------------|------------|------------|
|                                | 0-14      | 15-19    | 20-24    | 25-29    | 30-34    | 35-39    | 40-44    | 45-49     | 50-54     | 55-59     | 60-64     | 65-69      | 70-74      | 75-79      | 80+        |            |
| Lip                            | 0         | 0        | 0        | 0        | 0        | 0        | 0        | 0         | 0         | 0         | 0         | 0          | 0          | 0          | 0          | 0          |
| Oral Cavity                    | 0         | 0        | 0        | 0        | 0        | 0        | 0        | 0         | 0         | 0         | 0         | 0          | 0          | 1          | 3          | 4          |
| Head & Neck                    | 0         | 0        | 0        | 0        | 0        | 0        | 0        | 0         | 0         | 1         | 0         | 0          | 0          | 1          | 1          | 3          |
| Esophagus                      | 0         | 0        | 0        | 0        | 0        | 0        | 0        | 0         | 0         | 1         | 0         | 2          | 2          | 2          | 6          | 13         |
| Stomach                        | 0         | 0        | 0        | 0        | 0        | 0        | 1        | 0         | 2         | 1         | 0         | 1          | 2          | 4          | 13         | 24         |
| Colon                          | 0         | 0        | 0        | 0        | 0        | 1        | 0        | 1         | 3         | 5         | 4         | 8          | 9          | 19         | 41         | 91         |
| Rectum                         | 0         | 0        | 0        | 0        | 1        | 0        | 1        | 2         | 4         | 1         | 1         | 2          | 0          | 1          | 10         | 23         |
| Liver                          | 0         | 0        | 0        | 0        | 0        | 0        | 0        | 0         | 0         | 0         | 0         | 0          | 0          | 1          | 1          | 2          |
| Gall Bladder & Biliary Tract   | 0         | 0        | 0        | 0        | 0        | 0        | 0        | 0         | 2         | 1         | 1         | 2          | 4          | 0          | 4          | 14         |
| Pancreas                       | 0         | 0        | 0        | 0        | 0        | 0        | 0        | 1         | 1         | 2         | 4         | 3          | 6          | 5          | 23         | 45         |
| Digestive Tract                | 0         | 0        | 0        | 0        | 0        | 0        | 0        | 2         | 2         | 1         | 1         | 2          | 0          | 2          | 5          | 15         |
| Larynx                         | 0         | 0        | 0        | 0        | 0        | 0        | 0        | 0         | 0         | 0         | 0         | 0          | 1          | 0          | 0          | 1          |
| Trachea, Bronchus & Lung       | 0         | 0        | 1        | 0        | 0        | 1        | 2        | 5         | 12        | 22        | 19        | 29         | 35         | 48         | 39         | 213        |
| Respiratory System             | 0         | 0        | 0        | 0        | 0        | 0        | 0        | 0         | 0         | 1         | 0         | 0          | 1          | 1          | 3          | 6          |
| Bone & Connective Tissue       | 1         | 0        | 1        | 0        | 0        | 0        | 0        | 1         | 1         | 1         | 1         | 1          | 0          | 1          | 1          | 9          |
| Malignant Melanoma of Skin     | 0         | 0        | 0        | 0        | 0        | 0        | 0        | 2         | 1         | 0         | 2         | 1          | 0          | 0          | 5          | 11         |
| Breast                         | 0         | 0        | 0        | 1        | 1        | 1        | 0        | 5         | 15        | 18        | 8         | 21         | 13         | 17         | 51         | 151        |
| Cervix Invasive                | 0         | 0        | 0        | 1        | 0        | 1        | 1        | 3         | 1         | 1         | 1         | 0          | 0          | 1          | 1          | 11         |
| Uterus                         | 0         | 0        | 0        | 0        | 0        | 0        | 0        | 0         | 0         | 2         | 3         | 3          | 5          | 4          | 6          | 23         |
| Ovary                          | 0         | 0        | 0        | 0        | 0        | 0        | 0        | 3         | 1         | 8         | 4         | 8          | 6          | 7          | 18         | 55         |
| Female Genital Organs          | 0         | 0        | 0        | 0        | 0        | 0        | 0        | 0         | 0         | 0         | 0         | 1          | 1          | 0          | 2          | 4          |
| Kidney                         | 0         | 0        | 0        | 0        | 0        | 0        | 1        | 1         | 2         | 2         | 0         | 2          | 1          | 2          | 5          | 16         |
| Bladder                        | 0         | 0        | 0        | 0        | 0        | 0        | 0        | 0         | 1         | 0         | 0         | 1          | 0          | 0          | 6          | 8          |
| Other Urinary Tract            | 0         | 0        | 0        | 0        | 0        | 0        | 0        | 0         | 0         | 0         | 0         | 0          | 0          | 0          | 0          | 0          |
| Brain & Central Nervous System | 0         | 1        | 1        | 0        | 0        | 0        | 1        | 1         | 1         | 0         | 1         | 1          | 3          | 1          | 4          | 15         |
| Thyroid                        | 0         | 0        | 0        | 0        | 0        | 0        | 0        | 0         | 0         | 0         | 0         | 0          | 0          | 0          | 2          | 2          |
| Other Endocrine Glands         | 0         | 0        | 0        | 0        | 0        | 0        | 0        | 0         | 0         | 0         | 0         | 0          | 0          | 0          | 0          | 0          |
| Non-Hodgkin's Lymphoma         | 0         | 0        | 0        | 0        | 1        | 1        | 0        | 2         | 1         | 2         | 3         | 4          | 5          | 7          | 13         | 39         |
| Hodgkin's Disease              | 0         | 0        | 0        | 0        | 0        | 0        | 0        | 0         | 0         | 0         | 0         | 0          | 0          | 0          | 0          | 0          |
| Multiple Myeloma               | 0         | 0        | 0        | 0        | 0        | 0        | 1        | 0         | 2         | 2         | 0         | 2          | 4          | 5          | 10         | 26         |
| Leukemia                       | 0         | 1        | 0        | 0        | 1        | 0        | 0        | 0         | 0         | 2         | 1         | 4          | 4          | 3          | 14         | 30         |
| Primary Unknown                | 0         | 0        | 0        | 0        | 0        | 0        | 1        | 1         | 6         | 5         | 5         | 4          | 10         | 9          | 38         | 79         |
| Other Primaries                | 0         | 0        | 0        | 0        | 1        | 0        | 0        | 0         | 1         | 0         | 0         | 0          | 2          | 1          | 4          | 9          |
| <b>Total</b>                   | <b>1</b>  | <b>2</b> | <b>3</b> | <b>2</b> | <b>5</b> | <b>5</b> | <b>9</b> | <b>30</b> | <b>59</b> | <b>79</b> | <b>59</b> | <b>102</b> | <b>114</b> | <b>143</b> | <b>329</b> | <b>942</b> |

MORTALITY – AGE-SPECIFIC NUMBERS (MALE) – 2003

| SITE                           | Age Group |          |          |          |          |          |           |           |           |           |            |            |            |            |            | All Ages    |
|--------------------------------|-----------|----------|----------|----------|----------|----------|-----------|-----------|-----------|-----------|------------|------------|------------|------------|------------|-------------|
|                                | 0-14      | 15-19    | 20-24    | 25-29    | 30-34    | 35-39    | 40-44     | 45-49     | 50-54     | 55-59     | 60-64      | 65-69      | 70-74      | 75-79      | 80+        |             |
| Lip                            | 0         | 0        | 0        | 0        | 0        | 0        | 0         | 0         | 0         | 0         | 0          | 0          | 0          | 0          | 0          | 0           |
| Oral Cavity                    | 0         | 0        | 0        | 0        | 0        | 0        | 0         | 1         | 0         | 1         | 1          | 0          | 0          | 0          | 0          | 3           |
| Head & Neck                    | 0         | 0        | 0        | 0        | 0        | 0        | 1         | 1         | 1         | 0         | 2          | 0          | 1          | 3          | 3          | 12          |
| Esophagus                      | 0         | 0        | 0        | 0        | 0        | 0        | 1         | 2         | 2         | 3         | 9          | 3          | 3          | 8          | 10         | 41          |
| Stomach                        | 0         | 0        | 0        | 0        | 0        | 0        | 0         | 0         | 3         | 3         | 3          | 6          | 5          | 2          | 13         | 35          |
| Colon                          | 0         | 0        | 0        | 1        | 0        | 1        | 3         | 1         | 6         | 5         | 6          | 10         | 15         | 14         | 24         | 86          |
| Rectum                         | 0         | 0        | 0        | 0        | 0        | 0        | 0         | 0         | 2         | 3         | 5          | 2          | 11         | 5          | 10         | 38          |
| Liver                          | 0         | 0        | 0        | 0        | 0        | 0        | 1         | 0         | 1         | 1         | 2          | 1          | 0          | 0          | 2          | 8           |
| Gall Bladder & Biliary Tract   | 0         | 0        | 0        | 0        | 0        | 1        | 0         | 1         | 0         | 1         | 0          | 1          | 5          | 0          | 0          | 9           |
| Pancreas                       | 0         | 0        | 0        | 0        | 0        | 1        | 1         | 1         | 3         | 4         | 6          | 8          | 10         | 9          | 19         | 62          |
| Digestive Tract                | 0         | 0        | 0        | 0        | 0        | 0        | 0         | 1         | 0         | 0         | 0          | 2          | 1          | 1          | 5          | 10          |
| Larynx                         | 0         | 0        | 0        | 0        | 0        | 0        | 0         | 0         | 1         | 2         | 0          | 2          | 3          | 1          | 0          | 9           |
| Trachea, Bronchus & Lung       | 0         | 0        | 0        | 0        | 0        | 0        | 0         | 7         | 9         | 16        | 32         | 41         | 48         | 58         | 95         | 306         |
| Respiratory System             | 0         | 0        | 0        | 0        | 0        | 0        | 0         | 0         | 0         | 0         | 1          | 1          | 0          | 1          | 2          | 5           |
| Bone & Connective Tissue       | 0         | 0        | 1        | 0        | 0        | 0        | 1         | 0         | 1         | 0         | 0          | 1          | 1          | 4          | 1          | 10          |
| Malignant Melanoma of Skin     | 0         | 0        | 0        | 0        | 1        | 0        | 3         | 2         | 0         | 0         | 0          | 2          | 0          | 2          | 3          | 13          |
| Breast                         | 0         | 0        | 0        | 0        | 0        | 0        | 0         | 0         | 0         | 1         | 0          | 0          | 0          | 1          | 0          | 2           |
| Prostate                       | 0         | 0        | 0        | 0        | 0        | 0        | 0         | 0         | 0         | 4         | 10         | 16         | 25         | 47         | 119        | 221         |
| Male Genital Organs            | 0         | 0        | 2        | 0        | 0        | 0        | 0         | 0         | 0         | 1         | 0          | 0          | 0          | 0          | 1          | 4           |
| Kidney                         | 0         | 0        | 0        | 0        | 0        | 0        | 1         | 1         | 3         | 7         | 3          | 5          | 6          | 2          | 6          | 34          |
| Bladder                        | 0         | 0        | 0        | 0        | 0        | 0        | 0         | 0         | 1         | 1         | 4          | 3          | 8          | 6          | 16         | 39          |
| Other Urinary Tract            | 0         | 0        | 0        | 0        | 0        | 0        | 0         | 0         | 0         | 0         | 0          | 0          | 0          | 1          | 1          | 2           |
| Brain & Central Nervous System | 0         | 0        | 0        | 1        | 1        | 1        | 1         | 1         | 2         | 2         | 3          | 9          | 2          | 2          | 4          | 29          |
| Thyroid                        | 0         | 0        | 0        | 0        | 0        | 0        | 0         | 0         | 1         | 0         | 0          | 0          | 0          | 1          | 0          | 2           |
| Other Endocrine Glands         | 0         | 0        | 0        | 0        | 0        | 0        | 0         | 0         | 0         | 0         | 0          | 0          | 0          | 0          | 0          | 0           |
| Non-Hodgkin's Lymphoma         | 0         | 0        | 0        | 0        | 0        | 0        | 1         | 2         | 5         | 6         | 3          | 7          | 9          | 6          | 11         | 50          |
| Hodgkin's Disease              | 0         | 0        | 0        | 0        | 0        | 0        | 0         | 0         | 0         | 1         | 0          | 0          | 0          | 1          | 0          | 2           |
| Multiple Myeloma               | 0         | 0        | 0        | 0        | 0        | 0        | 0         | 0         | 0         | 0         | 2          | 2          | 3          | 4          | 5          | 16          |
| Leukemia                       | 1         | 1        | 0        | 0        | 1        | 0        | 0         | 1         | 1         | 1         | 2          | 4          | 8          | 9          | 22         | 51          |
| Primary Unknown                | 0         | 0        | 0        | 1        | 0        | 0        | 0         | 2         | 4         | 5         | 4          | 6          | 16         | 13         | 36         | 87          |
| Other Primaries                | 0         | 0        | 0        | 0        | 0        | 0        | 0         | 1         | 0         | 2         | 2          | 2          | 0          | 0          | 3          | 10          |
| <b>Total</b>                   | <b>1</b>  | <b>1</b> | <b>3</b> | <b>3</b> | <b>3</b> | <b>4</b> | <b>14</b> | <b>25</b> | <b>46</b> | <b>70</b> | <b>100</b> | <b>134</b> | <b>180</b> | <b>201</b> | <b>411</b> | <b>1196</b> |



MORTALITY – AGE-SPECIFIC NUMBERS (MALE) – 2004

| SITE                           | Age Group |          |          |          |          |          |           |           |           |           |           |            |            |            | All Ages   |             |
|--------------------------------|-----------|----------|----------|----------|----------|----------|-----------|-----------|-----------|-----------|-----------|------------|------------|------------|------------|-------------|
|                                | 0-14      | 15-19    | 20-24    | 25-29    | 30-34    | 35-39    | 40-44     | 45-49     | 50-54     | 55-59     | 60-64     | 65-69      | 70-74      | 75-79      |            | 80+         |
| Lip                            | 0         | 0        | 0        | 0        | 0        | 0        | 0         | 0         | 0         | 0         | 0         | 0          | 0          | 0          | 0          | 0           |
| Oral Cavity                    | 0         | 0        | 0        | 0        | 1        | 0        | 1         | 1         | 1         | 2         | 2         | 0          | 1          | 0          | 2          | 11          |
| Head & Neck                    | 0         | 0        | 0        | 0        | 0        | 0        | 0         | 0         | 0         | 2         | 3         | 2          | 2          | 0          | 1          | 10          |
| Esophagus                      | 0         | 0        | 0        | 0        | 0        | 0        | 0         | 3         | 3         | 0         | 4         | 4          | 1          | 3          | 11         | 29          |
| Stomach                        | 0         | 0        | 0        | 0        | 0        | 1        | 0         | 1         | 5         | 5         | 1         | 5          | 7          | 2          | 12         | 39          |
| Colon                          | 0         | 0        | 0        | 0        | 0        | 1        | 0         | 3         | 3         | 6         | 7         | 13         | 9          | 17         | 29         | 88          |
| Rectum                         | 0         | 0        | 0        | 0        | 0        | 0        | 0         | 3         | 5         | 4         | 7         | 5          | 6          | 4          | 16         | 50          |
| Liver                          | 1         | 0        | 0        | 0        | 0        | 0        | 1         | 0         | 0         | 0         | 2         | 2          | 0          | 1          | 0          | 7           |
| Gall Bladder & Biliary Tract   | 0         | 0        | 0        | 0        | 0        | 0        | 0         | 1         | 0         | 2         | 0         | 4          | 3          | 1          | 5          | 16          |
| Pancreas                       | 0         | 0        | 0        | 0        | 0        | 1        | 1         | 2         | 5         | 5         | 4         | 8          | 4          | 10         | 15         | 55          |
| Digestive Tract                | 0         | 0        | 0        | 0        | 0        | 0        | 0         | 1         | 1         | 1         | 1         | 2          | 2          | 5          | 1          | 14          |
| Larynx                         | 0         | 0        | 0        | 0        | 0        | 0        | 0         | 0         | 0         | 1         | 0         | 1          | 3          | 0          | 1          | 6           |
| Trachea, Bronchus & Lung       | 0         | 0        | 0        | 0        | 0        | 0        | 1         | 3         | 8         | 17        | 28        | 35         | 48         | 55         | 73         | 268         |
| Respiratory System             | 0         | 0        | 0        | 0        | 0        | 0        | 0         | 0         | 0         | 0         | 2         | 0          | 2          | 0          | 0          | 4           |
| Bone & Connective Tissue       | 0         | 0        | 0        | 0        | 0        | 0        | 0         | 0         | 0         | 2         | 2         | 1          | 0          | 1          | 1          | 7           |
| Malignant Melanoma of Skin     | 0         | 0        | 0        | 0        | 0        | 0        | 1         | 0         | 0         | 1         | 0         | 1          | 1          | 3          | 4          | 11          |
| Breast                         | 0         | 0        | 0        | 0        | 0        | 0        | 0         | 1         | 0         | 0         | 0         | 0          | 0          | 0          | 1          | 2           |
| Prostate                       | 0         | 0        | 0        | 0        | 0        | 0        | 0         | 0         | 3         | 3         | 7         | 13         | 32         | 39         | 110        | 207         |
| Male Genital Organs            | 0         | 0        | 0        | 0        | 0        | 0        | 0         | 0         | 0         | 0         | 0         | 0          | 0          | 0          | 1          | 1           |
| Kidney                         | 1         | 0        | 0        | 0        | 0        | 0        | 0         | 2         | 1         | 2         | 2         | 5          | 4          | 4          | 9          | 30          |
| Bladder                        | 0         | 0        | 0        | 0        | 0        | 0        | 0         | 1         | 0         | 0         | 2         | 0          | 6          | 4          | 27         | 40          |
| Other Urinary Tract            | 0         | 0        | 0        | 0        | 0        | 0        | 0         | 0         | 0         | 0         | 0         | 0          | 1          | 0          | 0          | 1           |
| Brain & Central Nervous System | 1         | 0        | 1        | 1        | 2        | 1        | 3         | 0         | 1         | 3         | 1         | 3          | 4          | 3          | 1          | 25          |
| Thyroid                        | 0         | 0        | 0        | 0        | 0        | 0        | 0         | 0         | 0         | 0         | 0         | 0          | 0          | 0          | 0          | 0           |
| Other Endocrine Glands         | 0         | 0        | 0        | 0        | 0        | 0        | 0         | 0         | 0         | 0         | 0         | 0          | 0          | 0          | 0          | 0           |
| Non-Hodgkin's Lymphoma         | 0         | 0        | 0        | 0        | 0        | 0        | 2         | 2         | 1         | 3         | 6         | 1          | 13         | 9          | 17         | 54          |
| Hodgkin's Disease              | 0         | 0        | 0        | 0        | 0        | 0        | 0         | 0         | 0         | 0         | 0         | 0          | 0          | 1          | 0          | 1           |
| Multiple Myeloma               | 0         | 0        | 0        | 0        | 0        | 0        | 0         | 1         | 1         | 2         | 3         | 2          | 4          | 4          | 10         | 27          |
| Leukemia                       | 1         | 0        | 0        | 1        | 0        | 0        | 1         | 0         | 2         | 2         | 5         | 4          | 7          | 7          | 20         | 50          |
| Primary Unknown                | 0         | 0        | 0        | 0        | 0        | 1        | 2         | 2         | 2         | 3         | 5         | 5          | 14         | 20         | 25         | 79          |
| Other Primaries                | 0         | 0        | 0        | 0        | 0        | 0        | 0         | 0         | 0         | 1         | 2         | 1          | 1          | 0          | 1          | 6           |
| <b>Total</b>                   | <b>4</b>  | <b>0</b> | <b>1</b> | <b>2</b> | <b>3</b> | <b>5</b> | <b>13</b> | <b>27</b> | <b>42</b> | <b>67</b> | <b>96</b> | <b>117</b> | <b>175</b> | <b>193</b> | <b>393</b> | <b>1138</b> |

MORTALITY – AGE-SPECIFIC RATES PER 100,000 (FEMALE) – 2003

| SITE                           | Age Group |            |          |            |             |             |             |             |              |              |              |              |              |              |               | All Ages   |
|--------------------------------|-----------|------------|----------|------------|-------------|-------------|-------------|-------------|--------------|--------------|--------------|--------------|--------------|--------------|---------------|------------|
|                                | 0-14      | 15-19      | 20-24    | 25-29      | 30-34       | 35-39       | 40-44       | 45-49       | 50-54        | 55-59        | 60-64        | 65-69        | 70-74        | 75-79        | 80+           |            |
| Lip                            | 0         | 0          | 0        | 0          | 0           | 0           | 0           | 0           | 0            | 0            | 0            | 0            | 0            | 0            | 0             | 0          |
| Oral Cavity                    | 0         | 0          | 0        | 0          | 0           | 0           | 0           | 0           | 0            | 4            | 19.4         | 0            | 0            | 0            | 27.2          | 2.6        |
| Head & Neck                    | 0         | 0          | 0        | 0          | 0           | 0           | 0           | 0           | 0            | 0            | 4.9          | 5.3          | 0            | 5.9          | 0             | 0.6        |
| Esophagus                      | 0         | 0          | 0        | 0          | 0           | 0           | 0           | 0           | 0            | 4            | 0            | 0            | 10.9         | 5.9          | 23.8          | 2.2        |
| Stomach                        | 0         | 0          | 0        | 0          | 0           | 0           | 0           | 0           | 3.2          | 0            | 0            | 0            | 0            | 0            | 51.1          | 3.1        |
| Colon                          | 0         | 0          | 0        | 0          | 3.3         | 0           | 0           | 5.3         | 3.2          | 23.8         | 19.4         | 58.7         | 54.5         | 117.3        | 146.4         | 19.3       |
| Rectum                         | 0         | 0          | 0        | 0          | 3.3         | 0           | 0           | 5.3         | 0            | 0            | 9.7          | 10.7         | 21.8         | 29.3         | 27.2          | 4.7        |
| Liver                          | 0         | 0          | 0        | 0          | 0           | 0           | 2.5         | 0           | 0            | 0            | 0            | 0            | 10.9         | 0            | 0             | 0.6        |
| Gall Bladder & Biliary Tract   | 0         | 0          | 0        | 0          | 0           | 0           | 0           | 0           | 3.2          | 4            | 14.6         | 5.3          | 5.5          | 52.8         | 23.8          | 4.5        |
| Pancreas                       | 0         | 0          | 0        | 0          | 0           | 2.9         | 5           | 2.6         | 6.4          | 0            | 9.7          | 26.7         | 43.6         | 41.1         | 68.1          | 9.4        |
| Digestive Tract                | 0         | 0          | 0        | 0          | 0           | 0           | 0           | 0           | 0            | 0            | 14.6         | 16           | 0            | 0            | 13.6          | 2          |
| Larynx                         | 0         | 0          | 0        | 0          | 0           | 0           | 0           | 2.6         | 0            | 0            | 9.7          | 0            | 0            | 0            | 10.2          | 1.2        |
| Trachea, Bronchus & Lung       | 0         | 0          | 0        | 0          | 0           | 2.9         | 2.5         | 7.9         | 19.3         | 75.4         | 111.6        | 218.8        | 190.8        | 228.8        | 218           | 45.6       |
| Respiratory System             | 0         | 0          | 0        | 0          | 0           | 0           | 2.5         | 0           | 3.2          | 0            | 0            | 0            | 5.5          | 0            | 0             | 0.6        |
| Bone & Connective Tissue       | 0         | 0          | 0        | 0          | 0           | 2.9         | 0           | 2.6         | 0            | 0            | 4.9          | 10.7         | 0            | 5.9          | 3.4           | 1.4        |
| Malignant Melanoma of Skin     | 0         | 0          | 0        | 0          | 3.3         | 2.9         | 2.5         | 0           | 3.2          | 7.9          | 4.9          | 0            | 0            | 11.7         | 6.8           | 2.2        |
| Breast                         | 0         | 2.6        | 0        | 3.2        | 6.6         | 14.7        | 10.1        | 21.1        | 25.8         | 47.6         | 48.5         | 90.7         | 130.8        | 93.9         | 204.3         | 33.1       |
| Cervix Invasive                | 0         | 0          | 0        | 3.2        | 6.6         | 0           | 0           | 2.6         | 3.2          | 4            | 9.7          | 10.7         | 0            | 5.9          | 6.8           | 2.6        |
| Uterus                         | 0         | 0          | 0        | 0          | 0           | 0           | 0           | 2.6         | 3.2          | 7.9          | 4.9          | 16           | 16.4         | 23.5         | 13.6          | 3.7        |
| Ovary                          | 0         | 0          | 0        | 0          | 0           | 0           | 0           | 5.3         | 16.1         | 11.9         | 14.6         | 42.7         | 38.2         | 52.8         | 44.3          | 9.8        |
| Female Genital Organs          | 0         | 0          | 0        | 0          | 0           | 0           | 2.5         | 0           | 0            | 0            | 0            | 5.3          | 0            | 0            | 10.2          | 1          |
| Kidney                         | 0         | 0          | 0        | 0          | 0           | 2.9         | 0           | 0           | 3.2          | 4            | 4.9          | 16           | 21.8         | 17.6         | 20.4          | 3.9        |
| Bladder                        | 0         | 0          | 0        | 0          | 0           | 0           | 0           | 2.6         | 0            | 4            | 4.9          | 16           | 16.4         | 17.6         | 30.6          | 4.1        |
| Other Urinary Tract            | 0         | 0          | 0        | 0          | 0           | 0           | 0           | 0           | 0            | 0            | 0            | 0            | 0            | 0            | 0             | 0          |
| Brain & Central Nervous System | 0         | 0          | 0        | 0          | 0           | 2.9         | 5           | 0           | 6.4          | 7.9          | 14.6         | 10.7         | 5.5          | 5.9          | 23.8          | 4.1        |
| Thyroid                        | 0         | 0          | 0        | 0          | 0           | 0           | 0           | 2.6         | 0            | 0            | 0            | 0            | 0            | 0            | 6.8           | 0.6        |
| Other Endocrine Glands         | 0         | 0          | 0        | 0          | 0           | 0           | 0           | 0           | 0            | 0            | 0            | 5.3          | 0            | 0            | 0             | 0.2        |
| Non-Hodgkin's Lymphoma         | 0         | 2.6        | 0        | 0          | 0           | 0           | 0           | 0           | 0            | 11.9         | 9.7          | 10.7         | 27.3         | 41.1         | 71.5          | 8.1        |
| Hodgkin's Disease              | 0         | 0          | 0        | 0          | 0           | 0           | 0           | 0           | 0            | 0            | 0            | 0            | 0            | 5.9          | 0             | 0.2        |
| Multiple Myeloma               | 0         | 0          | 0        | 0          | 0           | 0           | 0           | 0           | 0            | 4            | 14.6         | 0            | 21.8         | 23.5         | 6.8           | 2.8        |
| Leukemia                       | 1         | 0          | 0        | 0          | 0           | 0           | 2.5         | 0           | 0            | 0            | 19.4         | 21.4         | 16.4         | 23.5         | 51.1          | 6.3        |
| Primary Unknown                | 0         | 0          | 0        | 0          | 0           | 0           | 12.6        | 2.6         | 12.9         | 7.9          | 48.5         | 21.4         | 49.1         | 58.7         | 119.2         | 15.7       |
| Other Primaries                | 0         | 0          | 0        | 0          | 0           | 0           | 0           | 0           | 0            | 0            | 0            | 10.7         | 10.9         | 5.9          | 13.6          | 1.8        |
| <b>Total</b>                   | <b>1</b>  | <b>5.2</b> | <b>0</b> | <b>6.4</b> | <b>23.1</b> | <b>32.1</b> | <b>47.7</b> | <b>65.7</b> | <b>112.5</b> | <b>230.2</b> | <b>417.7</b> | <b>629.8</b> | <b>698.1</b> | <b>874.5</b> | <b>1242.6</b> | <b>198</b> |

MORTALITY – AGE-SPECIFIC RATES PER 100,000 (FEMALE) – 2004

| SITE                           | Age Group |            |            |            |             |             |             |           |              |              |              |              |              |              | All Ages      |            |
|--------------------------------|-----------|------------|------------|------------|-------------|-------------|-------------|-----------|--------------|--------------|--------------|--------------|--------------|--------------|---------------|------------|
|                                | 0-14      | 15-19      | 20-24      | 25-29      | 30-34       | 35-39       | 40-44       | 45-49     | 50-54        | 55-59        | 60-64        | 65-69        | 70-74        | 75-79        |               | 80+        |
| Lip                            | 0         | 0          | 0          | 0          | 0           | 0           | 0           | 0         | 0            | 0            | 0            | 0            | 0            | 0            | 0             | 0          |
| Oral Cavity                    | 0         | 0          | 0          | 0          | 0           | 0           | 0           | 0         | 0            | 0            | 0            | 0            | 0            | 5.9          | 10.1          | 0.8        |
| Head & Neck                    | 0         | 0          | 0          | 0          | 0           | 0           | 0           | 0         | 0            | 3.7          | 0            | 0            | 0            | 5.9          | 3.4           | 0.6        |
| Esophagus                      | 0         | 0          | 0          | 0          | 0           | 0           | 0           | 0         | 0            | 3.7          | 0            | 10.7         | 11           | 11.9         | 20.2          | 2.5        |
| Stomach                        | 0         | 0          | 0          | 0          | 0           | 0           | 2.5         | 0         | 6.1          | 3.7          | 0            | 5.4          | 11           | 23.8         | 43.7          | 4.7        |
| Colon                          | 0         | 0          | 0          | 0          | 0           | 3.1         | 0           | 2.6       | 9.2          | 18.7         | 19           | 42.9         | 49.4         | 112.9        | 137.8         | 17.8       |
| Rectum                         | 0         | 0          | 0          | 0          | 3.3         | 0           | 2.5         | 5.2       | 12.3         | 3.7          | 4.7          | 10.7         | 0            | 5.9          | 33.6          | 4.5        |
| Liver                          | 0         | 0          | 0          | 0          | 0           | 0           | 0           | 0         | 0            | 0            | 0            | 0            | 0            | 5.9          | 3.4           | 0.4        |
| Gall Bladder & Biliary Tract   | 0         | 0          | 0          | 0          | 0           | 0           | 0           | 0         | 6.1          | 3.7          | 4.7          | 10.7         | 22           | 0            | 13.4          | 2.7        |
| Pancreas                       | 0         | 0          | 0          | 0          | 0           | 0           | 0           | 2.6       | 3.1          | 7.5          | 19           | 16.1         | 32.9         | 29.7         | 77.3          | 8.8        |
| Digestive Tract                | 0         | 0          | 0          | 0          | 0           | 0           | 0           | 5.2       | 6.1          | 3.7          | 4.7          | 10.7         | 0            | 11.9         | 16.8          | 2.9        |
| Larynx                         | 0         | 0          | 0          | 0          | 0           | 0           | 0           | 0         | 0            | 0            | 0            | 0            | 5.5          | 0            | 0             | 0.2        |
| Trachea, Bronchus & Lung       | 0         | 0          | 2.7        | 0          | 0           | 3.1         | 5           | 13        | 36.9         | 82.3         | 90.2         | 155.5        | 192.1        | 285.3        | 131.1         | 41.6       |
| Respiratory System             | 0         | 0          | 0          | 0          | 0           | 0           | 0           | 0         | 0            | 3.7          | 0            | 0            | 5.5          | 5.9          | 10.1          | 1.2        |
| Bone & Connective Tissue       | 1         | 0          | 2.7        | 0          | 0           | 0           | 0           | 2.6       | 3.1          | 3.7          | 4.7          | 5.4          | 0            | 5.9          | 3.4           | 1.8        |
| Malignant Melanoma of Skin     | 0         | 0          | 0          | 0          | 0           | 0           | 0           | 5.2       | 3.1          | 0            | 9.5          | 5.4          | 0            | 0            | 16.8          | 2.1        |
| Breast                         | 0         | 0          | 0          | 3.1        | 3.3         | 3.1         | 0           | 13        | 46.1         | 67.3         | 38           | 112.6        | 71.4         | 101          | 171.5         | 29.5       |
| Cervix Invasive                | 0         | 0          | 0          | 3.1        | 0           | 3.1         | 2.5         | 7.8       | 3.1          | 3.7          | 4.7          | 0            | 0            | 5.9          | 3.4           | 2.1        |
| Uterus                         | 0         | 0          | 0          | 0          | 0           | 0           | 0           | 0         | 0            | 7.5          | 14.2         | 16.1         | 27.4         | 23.8         | 20.2          | 4.5        |
| Ovary                          | 0         | 0          | 0          | 0          | 0           | 0           | 0           | 7.8       | 3.1          | 29.9         | 19           | 42.9         | 32.9         | 41.6         | 60.5          | 10.7       |
| Female Genital Organs          | 0         | 0          | 0          | 0          | 0           | 0           | 0           | 0         | 0            | 0            | 0            | 5.4          | 5.5          | 0            | 6.7           | 0.8        |
| Kidney                         | 0         | 0          | 0          | 0          | 0           | 0           | 2.5         | 2.6       | 6.1          | 7.5          | 0            | 10.7         | 5.5          | 11.9         | 16.8          | 3.1        |
| Bladder                        | 0         | 0          | 0          | 0          | 0           | 0           | 0           | 0         | 3.1          | 0            | 0            | 5.4          | 0            | 0            | 20.2          | 1.6        |
| Other Urinary Tract            | 0         | 0          | 0          | 0          | 0           | 0           | 0           | 0         | 0            | 0            | 0            | 0            | 0            | 0            | 0             | 0          |
| Brain & Central Nervous System | 0         | 2.6        | 2.7        | 0          | 0           | 0           | 2.5         | 2.6       | 3.1          | 0            | 4.7          | 5.4          | 16.5         | 5.9          | 13.4          | 2.9        |
| Thyroid                        | 0         | 0          | 0          | 0          | 0           | 0           | 0           | 0         | 0            | 0            | 0            | 0            | 0            | 0            | 6.7           | 0.4        |
| Other Endocrine Glands         | 0         | 0          | 0          | 0          | 0           | 0           | 0           | 0         | 0            | 0            | 0            | 0            | 0            | 0            | 0             | 0          |
| Non-Hodgkin's Lymphoma         | 0         | 0          | 0          | 0          | 3.3         | 3.1         | 0           | 5.2       | 3.1          | 7.5          | 14.2         | 21.4         | 27.4         | 41.6         | 43.7          | 7.6        |
| Hodgkin's Disease              | 0         | 0          | 0          | 0          | 0           | 0           | 0           | 0         | 0            | 0            | 0            | 0            | 0            | 0            | 0             | 0          |
| Multiple Myeloma               | 0         | 0          | 0          | 0          | 0           | 0           | 2.5         | 0         | 6.1          | 7.5          | 0            | 10.7         | 22           | 29.7         | 33.6          | 5.1        |
| Leukemia                       | 0         | 2.6        | 0          | 0          | 3.3         | 0           | 0           | 0         | 0            | 7.5          | 4.7          | 21.4         | 22           | 17.8         | 47.1          | 5.9        |
| Primary Unknown                | 0         | 0          | 0          | 0          | 0           | 0           | 2.5         | 2.6       | 18.4         | 18.7         | 23.7         | 21.4         | 54.9         | 53.5         | 127.8         | 15.4       |
| Other Primaries                | 0         | 0          | 0          | 0          | 3.3         | 0           | 0           | 0         | 3.1          | 0            | 0            | 0            | 11           | 5.9          | 13.4          | 1.8        |
| <b>Total</b>                   | <b>1</b>  | <b>5.2</b> | <b>8.1</b> | <b>6.2</b> | <b>16.5</b> | <b>15.5</b> | <b>22.5</b> | <b>78</b> | <b>181.3</b> | <b>295.2</b> | <b>279.7</b> | <b>546.9</b> | <b>625.9</b> | <b>849.5</b> | <b>1106.1</b> | <b>184</b> |

MORTALITY – AGE-SPECIFIC RATES PER 100,000 (MALE) – 2003

| SITE                           | Age Group |            |            |            |            |           |             |             |              |              |              |              |             |               |             | All Ages     |
|--------------------------------|-----------|------------|------------|------------|------------|-----------|-------------|-------------|--------------|--------------|--------------|--------------|-------------|---------------|-------------|--------------|
|                                | 0-14      | 15-19      | 20-24      | 25-29      | 30-34      | 35-39     | 40-44       | 45-49       | 50-54        | 55-59        | 60-64        | 65-69        | 70-74       | 75-79         | 80+         |              |
| Lip                            | 0         | 0          | 0          | 0          | 0          | 0         | 0           | 0           | 0            | 0            | 0            | 0            | 0           | 0             | 0           | 0            |
| Oral Cavity                    | 0         | 0          | 0          | 0          | 0          | 0         | 0           | 2.6         | 0            | 3.9          | 5            | 0            | 0           | 0             | 0           | 0.6          |
| Head & Neck                    | 0         | 0          | 0          | 0          | 0          | 0         | 2.5         | 2.6         | 3.1          | 0            | 9.9          | 0            | 6.1         | 22.2          | 18.1        | 2.4          |
| Esophagus                      | 0         | 0          | 0          | 0          | 0          | 0         | 2.5         | 5.2         | 6.2          | 11.6         | 44.6         | 17           | 18.3        | 59.3          | 60.4        | 8.2          |
| Stomach                        | 0         | 0          | 0          | 0          | 0          | 0         | 0           | 0           | 9.3          | 11.6         | 14.9         | 34.1         | 30.5        | 14.8          | 78.6        | 7            |
| Colon                          | 0         | 0          | 0          | 3.1        | 0          | 3         | 7.6         | 2.6         | 18.7         | 19.4         | 29.7         | 56.8         | 91.5        | 103.8         | 145.1       | 17.2         |
| Rectum                         | 0         | 0          | 0          | 0          | 0          | 0         | 0           | 0           | 6.2          | 11.6         | 24.8         | 11.4         | 67.1        | 37.1          | 60.4        | 7.6          |
| Liver                          | 0         | 0          | 0          | 0          | 0          | 0         | 2.5         | 0           | 3.1          | 3.9          | 9.9          | 5.7          | 0           | 0             | 12.1        | 1.6          |
| Gall Bladder & Biliary Tract   | 0         | 0          | 0          | 0          | 0          | 3         | 0           | 2.6         | 0            | 3.9          | 0            | 5.7          | 30.5        | 0             | 0           | 1.8          |
| Pancreas                       | 0         | 0          | 0          | 0          | 0          | 3         | 2.5         | 2.6         | 9.3          | 15.5         | 29.7         | 45.4         | 61          | 66.7          | 114.8       | 12.4         |
| Digestive Tract                | 0         | 0          | 0          | 0          | 0          | 0         | 0           | 2.6         | 0            | 0            | 0            | 11.4         | 6.1         | 7.4           | 30.2        | 2            |
| Larynx                         | 0         | 0          | 0          | 0          | 0          | 0         | 0           | 0           | 3.1          | 7.8          | 0            | 11.4         | 18.3        | 7.4           | 0           | 1.8          |
| Trachea, Bronchus & Lung       | 0         | 0          | 0          | 0          | 0          | 0         | 0           | 18.1        | 28           | 62           | 158.5        | 232.8        | 292.8       | 429.9         | 574.2       | 61.3         |
| Respiratory System             | 0         | 0          | 0          | 0          | 0          | 0         | 0           | 0           | 0            | 0            | 5            | 5.7          | 0           | 7.4           | 12.1        | 1            |
| Bone & Connective Tissue       | 0         | 0          | 2.6        | 0          | 0          | 0         | 2.5         | 0           | 3.1          | 0            | 0            | 5.7          | 6.1         | 29.6          | 6           | 2            |
| Malignant Melanoma of Skin     | 0         | 0          | 0          | 0          | 3.3        | 0         | 7.6         | 5.2         | 0            | 0            | 0            | 11.4         | 0           | 14.8          | 18.1        | 2.6          |
| Breast                         | 0         | 0          | 0          | 0          | 0          | 0         | 0           | 0           | 0            | 3.9          | 0            | 0            | 0           | 7.4           | 0           | 0.4          |
| Prostate                       | 0         | 0          | 0          | 0          | 0          | 0         | 0           | 0           | 0            | 15.5         | 49.5         | 90.9         | 152.5       | 348.3         | 719.3       | 44.2         |
| Male Genital Organs            | 0         | 0          | 5.3        | 0          | 0          | 0         | 0           | 0           | 0            | 3.9          | 0            | 0            | 0           | 0             | 6           | 0.8          |
| Kidney                         | 0         | 0          | 0          | 0          | 0          | 0         | 2.5         | 2.6         | 9.3          | 27.1         | 14.9         | 28.4         | 36.6        | 14.8          | 36.3        | 6.8          |
| Bladder                        | 0         | 0          | 0          | 0          | 0          | 0         | 0           | 0           | 3.1          | 3.9          | 19.8         | 17           | 48.8        | 44.5          | 96.7        | 7.8          |
| Other Urinary Tract            | 0         | 0          | 0          | 0          | 0          | 0         | 0           | 0           | 0            | 0            | 0            | 0            | 0           | 7.4           | 6           | 0.4          |
| Brain & Central Nervous System | 0         | 0          | 0          | 3.1        | 3.3        | 3         | 2.5         | 2.6         | 6.2          | 7.8          | 14.9         | 51.1         | 12.2        | 14.8          | 24.2        | 5.8          |
| Thyroid                        | 0         | 0          | 0          | 0          | 0          | 0         | 0           | 0           | 3.1          | 0            | 0            | 0            | 0           | 7.4           | 0           | 0.4          |
| Other Endocrine Glands         | 0         | 0          | 0          | 0          | 0          | 0         | 0           | 0           | 0            | 0            | 0            | 0            | 0           | 0             | 0           | 0            |
| Non-Hodgkin's Lymphoma         | 0         | 0          | 0          | 0          | 0          | 0         | 2.5         | 5.2         | 15.6         | 23.3         | 14.9         | 39.8         | 54.9        | 44.5          | 66.5        | 10           |
| Hodgkin's Disease              | 0         | 0          | 0          | 0          | 0          | 0         | 0           | 0           | 0            | 3.9          | 0            | 0            | 0           | 7.4           | 0           | 0.4          |
| Multiple Myeloma               | 0         | 0          | 0          | 0          | 0          | 0         | 0           | 0           | 0            | 0            | 9.9          | 11.4         | 18.3        | 29.6          | 30.2        | 3.2          |
| Leukemia                       | 1         | 2.5        | 0          | 0          | 3.3        | 0         | 0           | 2.6         | 3.1          | 3.9          | 9.9          | 22.7         | 48.8        | 66.7          | 133         | 10.2         |
| Primary Unknown                | 0         | 0          | 0          | 3.1        | 0          | 0         | 0           | 5.2         | 12.4         | 19.4         | 19.8         | 34.1         | 97.6        | 96.3          | 217.6       | 17.4         |
| Other Primaries                | 0         | 0          | 0          | 0          | 0          | 0         | 0           | 2.6         | 0            | 7.8          | 9.9          | 11.4         | 0           | 0             | 18.1        | 2            |
| <b>Total</b>                   | <b>1</b>  | <b>2.5</b> | <b>7.9</b> | <b>9.3</b> | <b>9.9</b> | <b>12</b> | <b>35.2</b> | <b>64.9</b> | <b>142.9</b> | <b>271.6</b> | <b>495.5</b> | <b>761.3</b> | <b>1098</b> | <b>1489.5</b> | <b>2484</b> | <b>239.3</b> |

MORTALITY – AGE-SPECIFIC RATES PER 100,000 (MALE) – 2004

| SITE                           | Age Group |          |            |          |            |             |             |             |              |              |              |              |             |             |               | All Ages     |
|--------------------------------|-----------|----------|------------|----------|------------|-------------|-------------|-------------|--------------|--------------|--------------|--------------|-------------|-------------|---------------|--------------|
|                                | 0-14      | 15-19    | 20-24      | 25-29    | 30-34      | 35-39       | 40-44       | 45-49       | 50-54        | 55-59        | 60-64        | 65-69        | 70-74       | 75-79       | 80+           |              |
| Lip                            | 0         | 0        | 0          | 0        | 0          | 0           | 0           | 0           | 0            | 0            | 0            | 0            | 0           | 0           | 0             | 0            |
| Oral Cavity                    | 0         | 0        | 0          | 0        | 3.2        | 0           | 2.5         | 2.5         | 3            | 7.3          | 9.6          | 0            | 6.2         | 0           | 11.9          | 2.2          |
| Head & Neck                    | 0         | 0        | 0          | 0        | 0          | 0           | 0           | 0           | 0            | 7.3          | 14.5         | 11.3         | 12.4        | 0           | 5.9           | 2            |
| Esophagus                      | 0         | 0        | 0          | 0        | 0          | 0           | 0           | 7.6         | 8.9          | 0            | 19.3         | 22.6         | 6.2         | 22.3        | 65.4          | 5.7          |
| Stomach                        | 0         | 0        | 0          | 0        | 0          | 3.1         | 0           | 2.5         | 14.8         | 18.3         | 4.8          | 28.2         | 43.3        | 14.8        | 71.4          | 7.7          |
| Colon                          | 0         | 0        | 0          | 0        | 0          | 3.1         | 0           | 7.6         | 8.9          | 22           | 33.8         | 73.4         | 55.6        | 126.1       | 172.5         | 17.4         |
| Rectum                         | 0         | 0        | 0          | 0        | 0          | 0           | 0           | 7.6         | 14.8         | 14.7         | 33.8         | 28.2         | 37.1        | 29.7        | 95.2          | 9.9          |
| Liver                          | 1         | 0        | 0          | 0        | 0          | 0           | 2.5         | 0           | 0            | 0            | 9.6          | 11.3         | 0           | 7.4         | 0             | 1.4          |
| Gall Bladder & Biliary Tract   | 0         | 0        | 0          | 0        | 0          | 0           | 0           | 2.5         | 0            | 7.3          | 0            | 22.6         | 18.5        | 7.4         | 29.7          | 3.2          |
| Pancreas                       | 0         | 0        | 0          | 0        | 0          | 3.1         | 2.5         | 5.1         | 14.8         | 18.3         | 19.3         | 45.2         | 24.7        | 74.2        | 89.2          | 10.9         |
| Digestive Tract                | 0         | 0        | 0          | 0        | 0          | 0           | 0           | 2.5         | 3            | 3.7          | 4.8          | 11.3         | 12.4        | 37.1        | 5.9           | 2.8          |
| Larynx                         | 0         | 0        | 0          | 0        | 0          | 0           | 0           | 0           | 0            | 3.7          | 0            | 5.6          | 18.5        | 0           | 5.9           | 1.2          |
| Trachea, Bronchus & Lung       | 0         | 0        | 0          | 0        | 0          | 0           | 2.5         | 7.6         | 23.7         | 62.4         | 135.1        | 197.6        | 296.7       | 408         | 434.3         | 53           |
| Respiratory System             | 0         | 0        | 0          | 0        | 0          | 0           | 0           | 0           | 0            | 0            | 9.6          | 0            | 12.4        | 0           | 0             | 0.8          |
| Bone & Connective Tissue       | 0         | 0        | 0          | 0        | 0          | 0           | 0           | 0           | 0            | 7.3          | 9.6          | 5.6          | 0           | 7.4         | 5.9           | 1.4          |
| Malignant Melanoma of Skin     | 0         | 0        | 0          | 0        | 0          | 0           | 2.5         | 0           | 0            | 3.7          | 0            | 5.6          | 6.2         | 22.3        | 23.8          | 2.2          |
| Breast                         | 0         | 0        | 0          | 0        | 0          | 0           | 0           | 2.5         | 0            | 0            | 0            | 0            | 0           | 0           | 5.9           | 0.4          |
| Prostate                       | 0         | 0        | 0          | 0        | 0          | 0           | 0           | 0           | 8.9          | 11           | 33.8         | 73.4         | 197.8       | 289.3       | 654.5         | 40.9         |
| Male Genital Organs            | 0         | 0        | 0          | 0        | 0          | 0           | 0           | 0           | 0            | 0            | 0            | 0            | 0           | 0           | 5.9           | 0.2          |
| Kidney                         | 1         | 0        | 0          | 0        | 0          | 0           | 0           | 5.1         | 3            | 7.3          | 9.6          | 28.2         | 24.7        | 29.7        | 53.5          | 5.9          |
| Bladder                        | 0         | 0        | 0          | 0        | 0          | 0           | 0           | 2.5         | 0            | 0            | 9.6          | 0            | 37.1        | 29.7        | 160.6         | 7.9          |
| Other Urinary Tract            | 0         | 0        | 0          | 0        | 0          | 0           | 0           | 0           | 0            | 0            | 0            | 0            | 6.2         | 0           | 0             | 0.2          |
| Brain & Central Nervous System | 1         | 0        | 2.5        | 3        | 6.5        | 3.1         | 7.6         | 0           | 3            | 11           | 4.8          | 16.9         | 24.7        | 22.3        | 5.9           | 4.9          |
| Thyroid                        | 0         | 0        | 0          | 0        | 0          | 0           | 0           | 0           | 0            | 0            | 0            | 0            | 0           | 0           | 0             | 0            |
| Other Endocrine Glands         | 0         | 0        | 0          | 0        | 0          | 0           | 0           | 0           | 0            | 0            | 0            | 0            | 0           | 0           | 0             | 0            |
| Non-Hodgkin's Lymphoma         | 0         | 0        | 0          | 0        | 0          | 0           | 5.1         | 5.1         | 3            | 11           | 28.9         | 5.6          | 80.3        | 66.8        | 101.1         | 10.7         |
| Hodgkin's Disease              | 0         | 0        | 0          | 0        | 0          | 0           | 0           | 0           | 0            | 0            | 0            | 0            | 0           | 7.4         | 0             | 0.2          |
| Multiple Myeloma               | 0         | 0        | 0          | 0        | 0          | 0           | 0           | 2.5         | 3            | 7.3          | 14.5         | 11.3         | 24.7        | 29.7        | 59.5          | 5.3          |
| Leukemia                       | 1         | 0        | 0          | 3        | 0          | 0           | 2.5         | 0           | 5.9          | 7.3          | 24.1         | 22.6         | 43.3        | 51.9        | 119           | 9.9          |
| Primary Unknown                | 0         | 0        | 0          | 0        | 0          | 3.1         | 5.1         | 5.1         | 5.9          | 11           | 24.1         | 28.2         | 86.5        | 148.3       | 148.7         | 15.6         |
| Other Primaries                | 0         | 0        | 0          | 0        | 0          | 0           | 0           | 0           | 0            | 3.7          | 9.6          | 5.6          | 6.2         | 0           | 5.9           | 1.2          |
| <b>Total</b>                   | <b>4</b>  | <b>0</b> | <b>2.5</b> | <b>6</b> | <b>9.7</b> | <b>15.5</b> | <b>32.8</b> | <b>68.3</b> | <b>124.6</b> | <b>245.6</b> | <b>462.8</b> | <b>660.3</b> | <b>1082</b> | <b>1432</b> | <b>2337.5</b> | <b>225.1</b> |

## Contact Information

---

For more information about this report or to request additional copies, contact the Saskatchewan Cancer Agency Department of Epidemiology through the Contact Us link on the Agency's website at [www.saskcancer.ca](http://www.saskcancer.ca). Electronic copies are also available through the website.

**Saskatchewan Cancer Agency**

*A healthy population free from cancer*

#204-3775 Pasqua Street

Regina, Saskatchewan S4S 6W8

306-585-1831

[www.saskcancer.ca](http://www.saskcancer.ca)